

WEATHER

	Min.	Max.	Precip.
Wednesday, April 28	41	50	0.04
Thursday, April 29	40	51	0.00
Friday, April 30	35	59	0.00
Saturday, May 1	36	68	0.40
Sunday, May 2	39	67	0.00
Monday, May 3	35	56	0.00
Tuesday, May 4	32	65	0.00

By H. K. La

The Chelsea Standard

QUOTE

"I ask only to be a good and faithful servant of my Lord and my people."

—Harry S. Truman
33rd President

ONE HUNDRED-FIRST YEAR—No. 46

14 Pages This Week

CHELSEA, MICHIGAN, THURSDAY, MAY 6, 1971

15c per copy

SUBSCRIPTION: \$4.00 PER YEAR

Track Team Tops in Tough Albion Relays

Chelsea High school tracksters won another major relay event this past Saturday, May 1, by winning the Section IV division of the annual Albion Relays.

Chelsea out-distanced 12 other schools in their division by scoring 48 points. Runnerup Marysville was the closest competitor, with 32 points, while Charlotte followed with 25, Parma Western, 18, Hillsdale, 15, and Harper Woods, 15. The remaining teams had lesser totals.

Though the Chelsea athletes picked up six first places, it was once more the fact that the team placed in 12 of the 14 events that proved the difference.

Chelsea accounted for two of the four meet records that were broken. The 880 relay team of Larry Gorton, Mark Collins, Kim Aronson, and Jeff Hughes again set a meet record by winning in 1:33.6. Kim Aronson also broke a meet and school record for the second consecutive week in the 440-yard dash by winning in :51.5.

Other first places included Mitchell Heard in the 120-yard high hurdles which he ran in :16.5, Larry Gorton in the 180-yard low hurdles, :22.7; Jeff Hughes in the 220-yard dash, :24.4; and the mile relay of Larry Gorton, George Cameron, Dave Buxton, and Kim Aronson, who won in a time of 3:37.

Second places were gathered by Mark Collins, who leaped 20'7 1/2" in the long jump, and a rapidly improving Tim Lancaster, who jumped 11'6" in the pole vault. Dave Buxton was third in the

Thinclads Trample on Lincoln, 81-37

Chelsea trackmen defeated Lincoln in a dual meet Thursday, April 29. Final score for the day was 81-37.

According to Coach Bert Kruse, Lincoln threw a bit of a scare into the meet by building up an early lead in the field events. Following a win in the 880 relay, and first and second places in the straight running events, the Bulldogs had the meet under control. Coach Kruse said that this meet was the first of four important league meets which will determine final league standings. Conference winner and standings are determined by dual meet placings, and final places in the league meet itself.

Randy Seitz took a second place in the shot put, with a toss of 47'6 1/2", while Tim Lancaster was second in the pole vault, with 11'. Roger Fitch was first in the high jump, with 5'10", while Mark

(Continued on page three)

M-Teens Will Help at Medical Center

A group of 14-year-old and older teens is being organized at the Chelsea Medical Center under the guidance of Mrs. Betty Kock, Mrs. Mary Turcot, and Mrs. Nancy Dunn. The group will be called "M-Teens."

There are many varied duties the boys and girls who join this volunteer service will do. Major emphasis will be on the movie for the patients which is shown on Sunday afternoons.

become involved with special enations and other times, they may "During the summer, holiday vacation, music, arts and cards, letter writing, visiting, crafts, religious devotions, games or taking patients outside for walks, or downstairs to the beauty parlor.

(Any teen may pick up an application through the schools. A free one-day school sponsored by the American Red Cross will be required. It will be held May 22.

A committee will be set up to take interested teens to and from this school.

Following the closing of school in June, a tour of the Medical Center and a short orientation for the group will be given by Mrs. Alice Tite.

The M-Teen group will begin servicing the hospital following the orientation session.

A red and white candy stripe top has been chosen and ordered for use by the M-Teens while they are working at the hospital. Medical Center Senior group members will have tops which will be available to those who do not wish to purchase or make their own.

(Any young person 14 years old, or older, who is interested in participating in this program may contact Mrs. Betty Kock, 475-4780, or Mrs. Mary Turcot, 475-8761. Those who are not able to participate this summer, but who

(Continued on page five)



RECREATION COUNCIL FORMED: School Board President Don Irwin, front, left, and Walter Zeeb, looked on with pleasure as a long-time need in the community is finally realized. Daniels and Zeeb have supported the Recreation Council for a number of years, and have done much of the foot-work making the new agreement possible.

Tag Day To Benefit Scholarship Fund

National Honor Society members will conduct a Tag Day, Friday May 7, from 3 until 5 p.m., and on Saturday, May 8, from 9 a.m. until noon on the Main St. corners of downtown Chelsea. Members will be stationed at the bank corner, and at Stop & Shop, while an additional force will be on duty at the Drug Store corner Friday night from 7 to 9 p.m. There will also be identical canisters placed at various businesses around town, members stated.

National Honor Society students are giving their time during these two days to aid the Chelsea Scholarship Committee in raising

funds, which will be used to further the training and education of graduating seniors.

Counselor to the members of the National Honor Society is Mrs. Charles Winans, who will supervise the Tag Day activities. Captain of Tag Day is NHS president, Steve Smith.

Scholarship Committee indicated that this occasion is an excellent time for the community to meet the honor students in the high school. Residents are asked to note each student's name on his tag, when purchasing their own tag. It's a great way to meet people!

Funds Needed for Local Scholarships

Tag Day activities this coming week-end, which are the efforts of the National Honor Society at Chelsea High school, to assist the Chelsea Scholarship Committee, are a result of a growing concern on the part of members of the Scholarship Committee that a number of Chelsea High school graduates may find higher education barred to them this year.

College costs are soaring. At the same time, the availability of state and national funds is diminishing. The committee fears that "a number of deserving 1971 Chelsea High school graduates might find it financially difficult to go on beyond the high school level."

In an effort to combat the situation, this small band of private citizens, who call themselves the Chelsea Scholarship Committee, are making an "all-out attempt" to assist as many Chelsea graduates as possible in their desire for higher education.

Originally established by the Chelsea Teachers' Club in 1966, the Chelsea Scholarship Fund was dedicated to the purpose of assisting graduates of the high school

seek education beyond high school. Particular attention was paid to those students who had the ability to succeed in further training, but who were not being helped by the usual scholarship aids which assist the top students.

In the school years of 1965 and 1966, the fund was supported by the teachers' voluntary contributions. In 1966 and in the school year of 1967-68, community organizations and industries were contacted and their contributions solicited. There were no moneymaking or fund-raising activities. Expenses of the solicitation were borne by the school's general fund. All personnel donated their services.

Initial impetus for the establishment of the fund came in the late 1950's when the Chelsea Teachers' Club annually gave a scholarship to a future teacher. Subsequent to the tragic death of Mabel Fox, a teacher in the school who was well known and respected, the Mabel Fox Memorial Loan Fund was established.

In 1967, \$1,736.50 was received to be used for scholarships. Of

(Continued on page six)

Schiller Rescues Aunt From Burning Home

Chelsea firemen are still investigating the cause of the fire which occurred in the early Friday morning hours at the home of Mrs. Amanda Schiller, 312 South St. The blaze, which broke out in Mrs. Schiller's bedroom, caused burns over 75 percent of her body, and resulted in her death in University Hospital Saturday evening, May 1.

Mrs. Schiller was rescued from her smoke-filled residence by the heroic efforts of Glenn Schiller, 28, of 403 W. Middle St. Schiller was at home when the fire call came in to his mother, Mrs. Faye Schiller, night police-fire operator. He rushed to the scene of the blaze, which was just around the corner from his home, and ran into the dwelling to rescue Mrs. Amanda Schiller, a distant rela-

tive, before the fire department vehicles arrived.

Fire officials say that Mrs. Schiller had been warned by the night operator not to return to her smoke filled bedroom, but to leave the house. When she was found by Glenn Schiller, however, she was lying on the living room floor, wearing an undamaged bathrobe over her burned night clothing. Firemen presume she returned once more to the room to get her robe, and was then overcome by the smoke.

Schiller was unharmed by the rescue, as he dropped to the floor, immediately upon entering the building to avoid the smoke. By calling out, he was able to locate Mrs. Schiller, and carried her out of the home.

Fire Chief Jim Gaken claimed

(Continued on page five)

Teachers OK New Contract For Next Year

Board of Education, Teachers Both Pleased with Early Settlement

Following an eight-hour negotiation session Thursday evening, April 29, and ratification meetings by the CDA and the Chelsea Board of Education on Monday, May 3, the 1971-72 Master Contract, and amendments thereto between the board and the teachers have been approved by both parties.

School officials were pleased with the rapid settlement of the contract, which has been the cause of many disputes over the past few years.

Basically, the new contract involves minor changes.

First amendment reads: "All teachers in the junior and high school shall teach not more than five periods with two 50-minute planning periods plus a duty-free lunch period of at least 30 minutes." According to Business Manager Fred Mills, this has been the policy of the schools over the past few years, although not formally written into the contract.

Other changes include minor increases over what has been paid in past years in the amount of money the Board of Education will pay for medical insurance coverage, as well as the dates concerning when the 1971-72 pay scale shall be adopted for those teachers working through the summer, and the date upon which the contract comes into effect.

Pay scales for the head track coach and head basketball coach were raised by one-half, and one and one-half percent, respectively, while wrestling coaches' pay increased one percent, and the head of the junior high football program increased by one-half of one percent.

Salaries for the teachers increased only slightly this year, which is perhaps a reflection of the general economic slowdown noticed across the country. Starting salaries for teachers with a BA, and no experience climbed from \$7,450 per year to \$7,800, a one percent hike, while those

starting teachers with on MA, or BA plus 30 hours climbed from \$8,195 to \$8,580, which is a 4.10 percent raise.

Top salary for teachers with a BA was hiked from \$11,022 per year to \$12,168, while top salary for teachers with a BA plus 30 hours, or an MA, climbed 1.71 percent, from \$12,740 to \$13,336.

Most noteworthy addition to the new contract was the following statement, which is to be added to the new contract under a separate heading: "The board shall make every effort to insure those teachers who are returning and who have been continued on tenure or probation that there will be no reduction in staff for economic reasons for the school year 1971-72."

The second of a series of clothing drives sponsored by the Chelsea Church Women United will be held May 18 at the First Congregational church on E. Middle St. The drive, which is to last from between 9 and 11 a.m. is to provide good used clothing for use in the House By Side of the Road in Ann Arbor.

There is a great need for bed linens, towels, washclothes, and children's summer play clothes, according to Mrs. Jack Merkel, spokesman for CWU. Items are especially needed which could be used for summer camp programs.

Badly worn items, or clothing that is extremely out of style is not wanted, Mrs. Merkel claims, as the House has said that it has no use for such articles.

It is very helpful for the ladies who will be handling the clothing

(Continued on page three)



RETIRING: Doctors Michael Papo, director of the Chelsea Medical Center, and Chelsea Community Hospital, and Jerry Waldyke, vice-president of Chelsea Medical Clinic, Ltd., bid farewell to Mrs. Bernadine Hill, who retired Friday, April 30. Mrs.

Mrs. Bernadine Hill Retires From Chelsea Medical Clinic

Mrs. Bernadine Hill, 518 Chandler St., retired April 30 from Chelsea Medical Clinic, Ltd., where she had worked since the Clinic was just starting.

Coming to the Medical Center in 1962, Mrs. Hill was office nurse, and secretary to Dr. Papo. She was office manager, and was in charge of taking care of all he billing and insurance forms for the doctors at the Clinic.

At the time of her retirement this past week, Mrs. Hill, with the assistance of Dr. Papo, had established the Clinic's reputation as the only clinic in that would assist Schiller

when filling out their Medicare forms. Mrs. Hill was head of the insurance claims office for all the patients at the Clinic, and regarded this as a natural extension of her position.

A registered nurse, and graduate of Grace Hospital in Detroit, Mrs. Hill claims that the medical facilities in the Chelsea community have grown tremendously in her lifetime. A life-long resident of Chelsea, she remembers the "Chelsea Hospital," which operated in a large white house on the site of what is now the post office, during the 1930's. The hospital was

Hill was long-time office manager for the Chelsea Medical Clinic, and was most recently in charge of all insurance office claims for patients. She had worked at the Clinic since 1962, when the operation was in the formative stages.

little more than a place where a doctor and a few nurses received maternity patients, and performed minor operations, such as tonsilectomies.

In the early 1940's, the hospital was moved to another large home on Middle St., where it dwindled, and with the better access to the hospitals in Ann Arbor, gradually died. Mrs. Hill claims that the Chelsea Hospital could never operate in this decade, because of state regulations and restrictions, as it was small and very inadequate.

(She remembers that prior to

(Continued on page eight)



JAMES LIEBECK, center front, retired from Federal Screw Works Friday afternoon, April 30. George Krieger, supervisor of the accounting department, and Vincent Dorer, plant manager, congratulated him on his 31 1/2 years service to the company before his leaving. Liebeck has worked in the accounting department, and was head time-keeper for Federal Screw.

J. Liebeck Retires Friday From Federal Screw Works

James Liebeck, 17332 Old US-12, retired Friday afternoon, April 30, from the Federal Screw Works. Liebeck, who had worked for Federal Screw in Chelsea since September 1939, had been head time keeper, and worked in accounting for the company.

A life-long resident of Chelsea, Liebeck worked in Detroit for five years during the 1930's prior to his coming to Chelsea. He went to Detroit because the job

situation was so bad where he worked for the production control department of the Packard Motor Car Co. A graduate of St. Mary school in Chelsea, he is married, and has one daughter. His wife worked for the Federal Screw plant during World War II, when the company swelled from its normal employment of 200 to hire 1,100 full time workers.

Making the change-over to war materials brought many changes to the company, Liebeck reminisced, but following the war, production returned to normal.

Presently the company manufactures small parts for various different larger machines, including aircraft. No war materials are manufactured at the Chelsea plant, however.

Liebeck plans to travel much during his retirement, although he hasn't yet made up an itinerary.



Washington Report by Congressman MARVIN L. ESCH

A cursory knowledge of American history tells you that America has never once hesitated to do everything possible to help a returning veteran adjust to civilian life. Yet, for the veteran of the War in Vietnam, there definitely is a distinct departure from this norm.

Coming out of the military at the rate of one million annually, today's veteran, eager to find a job, often encounters only a cool reception at the personnel desk. Mustering out is really quite different than in the past, and is very likely the first chapter in a seemingly endless story resulting in apathy, indifference and resentment.

Labor statistics clearly indicate the extent of this dilemma. 320,000 Viet veterans are without jobs. Many are on welfare. Their rate of unemployment is double the national average (12.4 percent). For black and disabled veterans the figure approaches 25 percent. One Labor Department official recently commented, "We have a lot of angry young men on our hands." It's no mere bad dream for these young men.

Part of the difficulty is that today's veteran is younger and not as well trained as his predecessor of World War II or even Korea. When these men were released from duty they more often than not had a place in life to settle back into. Such is not the case with the Viet veteran. With that background, I feel it is both incumbent and imperative that we do an even more effective job than before.

Several proper and meaningful actions have been taken, but they are only a glimmer of what needs to be done. For example, the Veterans Administration has initiated "job marts" around the country and has offered similar assistance at their other offices. President Nixon has rightly launched a "Jobs for Veterans Program." It is charged specifically with educating the general public to the seriousness of the veterans plight and encourage potential employers to give veterans a better break.

AGRICULTURE IN ACTION

by GARY A. KLEINHENN
Michigan Farm Bureau

★ Reality of Life

Our reality of life can be clouded over by the false security offered by the comfort of modern technology. It is easy to forget that food still comes from the land and not a tin can.

The growth of the cities, however, is spreading out into the countryside taking people back closer to the land their ancestors left. But still agriculture on a large scale is a strange phenomenon to many people, and this lack of knowledge can be detrimental to our industry. It can bite off the hand that feeds us all.

A historical experience to clarify the point is available from the pages of Time-Life book, "The Cooking of China."

"In Hong Kong every Chinese is a farmer at heart. Given a tiny plot of land in the most unlikely place, even in the middle of a city, a Chinese will keep chickens and—if it can possibly be squeezed in—a vegetable garden. Spaces between homes are planted with growing vegetables and interspersed with high piles of manure for fertilizer throughout the city."

This is still the practice in the 1970's and permitted by government. In fact, throughout history high officials even care for their own gardens. But it hasn't always been this way.

"For a century before World War II the colony had been run by British officials," according to the Time-Life book. It reports, "Inside Hong Kong landlords forbade all tenants to grow vegetables in their backyards or keep livestock on the premises, for Westerners objected to the smell of manure, and flies would have been attracted by pigs and poultry."

The British regulations ended with the Japanese takeover a century later. Throughout the British period famine threatened, but with their exit, the city was literally transformed overnight. "Every Chinese who could lay claim to a scrap of land, even if it was no larger than a handkerchief, began to cultivate it."

Peasants, bankers, lawyers, doctors and art dealers were all in it together. Soon crops were growing on every spot of land, and chickens roamed the streets, and people enjoyed a higher quality of life, denied them for a hundred years because the controlling power lacked foresight into the reality of life—the continual need for food.

DOING HOMEWORK



★ MICHIGAN MIRROR ★

By Elmer E. White, Secretary, Michigan Press Association

Judges Aren't Enough
In the current clamor for judicial reform, the chief justice of Michigan's Court of Appeals is telling all listeners that the answer to clogged up court dockets isn't necessarily more judges.

And some people are listening. Among those who listened and acted on Chief Justice T. John Lesinski's recommendations are the members of the Judicial Council of California.

"Gentlemen," Lesinski told a workshop of the council in 1970, "in today's judicial world, the answer to the battle of the backlog is not the proliferation of courts and judges."

"It's the streamlining and centralization of your operation and the use of research talent as a supporting staff for the judges," Lesinski said the Michigan Appeals Court under his direction has established a central research staff which works for all justices in the court.

The staff goes through every appeal filed with the courts. It verifies all the facts of the case and determines what the disputed areas of fact are in each case. It also verifies each legal reference

made in the briefs to other decisions handed down by the courts in other cases which might pertain to the case at hand.

After thoroughly analyzing the case, the staff then makes a recommendation of a decision and sends a report to the judge assigned to the case. It is up to the judge to make a decision on the case and write the opinion.

End result of this setup, Lesinski reported, was a dramatic increase in the productivity of each justice.

The establishment of the central staff increased the number of cases each judge could handle by one third.

The council was so impressed by Lesinski's report that it recommended to the California legislature that the Michigan system be adopted in California also. The legislature agreed and the money to implement the change was appropriated for the current fiscal year.

Other cases are now jumping on the bandwagon. In 1970, the Court of Appeals of Louisiana and the second department of the Appellate Division of the Supreme Court of New York began experimenting

with the procedures developed in the Michigan Court of Appeals.

Justices from both courts have indicated the Michigan system, with modifications appropriate to their respective states, will most likely be adopted by those courts.

Motorists Drive Faster

The State Highway Department says it detects a slight increase in the speed at which Michigan motorists drive.

Tests run in January showed the average car speed on the state's freeway system had increased from 63.9 miles per hour during January, 1967, to 64.5 miles per hour. At the same time, the average speed for trucks increased 4.4 miles per hour from 50.7 miles per hour to 55.1 miles per hour.

The department also says its engineers have found most motorists' travel at a speed they consider reasonable and safe, regardless of the posted speed.

They say an arbitrary enforcement of posted speeds along most roads would merely increase the number of violators and diminish motorist respect for speed zones generally and have little effect on the speeds driven along that stretch of road.

Inspections Start

Among the signs of spring in Michigan are the resumption of the Motor Vehicle Check Lane program of the State Police.

Twenty-five State Police inspection teams will be operating around the state this year, augmented by local police departments in 12 Michigan cities.

During the winter, the State Police teams traveled around the state inspecting school buses. Director John R. Plants says 10,181 school buses were inspected and that several of them were discovered to have serious defects, which were corrected.

He said one make of bus was found to have a serious hydraulic brake line problem, and the manufacture was notified and removed the busses from service for modification.

Pollution Control Will Be Expensive

East Lansing—A team of Michigan State University and University of Wisconsin sociologists studying recent environmental movements have concluded that cleaning up the air and water will be too expensive to be a voluntary effort.

Strong anti-pollution legislation will be needed they say, because few companies can voluntarily adopt expensive pollution control programs and stay competitive. Individuals will also feel the pinch from higher taxes and utilities costs, higher consumer prices, and possibly some unemployment, the sociologists predict.

Yours truly,
Uncle Lew.

Uncle Lew from Lima Says:

DEAR MISTER EDITOR:

It was perused and passed un-animously Saturday night at the country store that whereas, forthwith and hereafter the first week in May is National Gripe Week. Zeke Grubb, that come up with the motion, was quick to tack on an amendment that Gripe Week in no way was to take away a feller's right to gripe whenever he pleases.

Zeke gave his reasons for setting aside this week for gripes. First off, with folks recovering from Federal Income Tax Day we has got the strength to git off some good gripes, and plenty of reason to fresh in our mind. Furthermore, allowed Zeke, there alius is kind of a lull between spring and summer, and we got the time to do some serious griping without working up a sweat.

Clem Webster was of a mind that Gripe Week will catch on all over the country. He had saw by the papers where twit as many people want to git out of this country than did two year ago. Clem said this poll said 10 percent want to live somewhere else, and Clem figured at least 90 percent is mad, but is trying to stick it out.

The way Clem worked it out, 10 percent is about all that is supporting the Government, and the rest is living off it. We got them that makes anywhere from \$200,000 on up a year that don't pay no tax at all, and we got them that won't work and git paid for it. Trouble is, went on Clem, that 90 percent is as unhappy as the 10 percent, either cause their living standard is higher than there tax-free \$200,000, or cause their welfare payments ain't big enuff.

When folks can sue and make New York City put em up in a

HAV-A-ELECTRIC

LICENSED
ELECTRICAL CONTRACTOR
Re-Wiring and New Work
Farm Wiring

BUILDERS:
We Need Work.
Call 475-7357

SING-ALONG MUSIC

at
INVERNESS INN
NORTH LAKE
Music By
JIM ROMINE & GARY SCRIPTER

SATURDAY NIGHTS

9:30 p.m. to 1:30 a.m.

YOUR FAVORITE SANDWICHES
SHRIMP, CHICKEN & FISH DINNERS

JUST REMINISCING

Items Taken from the Files of The Chelsea Standard

4 Years Ago . . .

Thursday, May 11, 1967—

New officers of Chelsea High's Future Farmers of America Chapter for 1967-68 are, Loren Heller, vice-president, Howard McCalla, secretary, Ron Bollinger, president; Gary Kuhl, reporter; Ron Herrst, sentinel; and Rod Powers, treasurer. Chapter advisor and agriculture teacher is Arthur C. Dodd. Offices were installed at the FFA parent banquet and awards night May 3 at the high school.

Special Honor awards for the past year, announced at the May 3 Future Farmers of America parent banquet and awards night were given to John Hafner, public speaking award; Howard McCalla, livestock; Rod Powers, Star Green Hand; Gerry Kuhl, top seed salesman; Loren Heller, Star Chapter Farmer; Richard Schenk, Star Crop; Ron Bollinger, Star Dairy; and Ron Montange, forestry award.

Cheryl Lee Grau, daughter of Mr. and Mrs. Alton A. Grau, Jr., of 2710 Fletcher Rd., is the recipient of a scholarship award given by the University of Michigan.

Edward E. Lewis, 41, an active worker on several school committees in the past few years, will be a candidate for the single vacancy on the Board of Education to be filled in the June 12 election. Dr. Clare Warren has announced he will not seek re-election.

The Rev. and Mrs. C. J. Renner of 3060 Fletcher Rd. are moving to 402 Tecumseh Place, Huron, O. The Rev. Renner was formerly the pastor at Zion Lutheran church, which position he recently resigned because of illness.

William Lee Watkins, son of Mr. and Mrs. William R. Watkins, 268 Cavanaugh Lake, was recently promoted from Airman 3rd Class to Airman 2nd Class. Watkins graduated from Chelsea High in 1965, and joined the Air Force in April 1966. He is presently stationed at Kincheloe AFB, with the Strategic Air Command.

14 Years Ago . . .

Thursday, May 9, 1957—

Special honor will be given at the Chelsea High school alumni banquet of June 15, to six members of the Class of 1897, who are planning a class reunion in observance of the 60th anniversary of their graduation. "Most Honored Guests" will be Mrs. Lillian Gerard Hoppe, Mrs. Linna Lighthall Miles, of Ann Arbor, Miss Minnie Schumacher, Mrs. May Wood Luick, Mrs. Marie Bacon Schneider, and Mrs. Elvira Clark Visel.

George Palmer, Jack Winans, and Mrs. Lloyd Schneider are planning a reunion of the Class of 1947 also. Named to the decorating committee for the banquet, to be held at Chelsea High school gymnasium, are Mrs. David Crocker, Mrs. Donald Schneider, and Robert Merkel.

Sylvan township supervisor Maurice Hoffman announced this week that three men in this area have again been appointed deputies at nearby lakes for the purpose of curbing speed and other unsafe practices of speed boat operators. They are Lee Mayne, Cronked Lake; Harry Mertens, Cedar Lake; and Herman Bertke, Cavanaugh Lake.

Norman H. Schmidt, 143 Van Buren St., celebrated his 35th service anniversary with the Michigan Bell Telephone Co. on Tuesday and was presented with a diamond-set tie clasp at St. Joseph Mercy Hospital, where he is recovering from surgery. He has been a resident of Chelsea for the past 52 years.

Lynda Marie Mayer, co-valedictorian of the 1957 class at Chelsea High school, has been awarded a Regents Alumni scholarship to the School of Nursing at the University of Michigan.

mind your
P's & Q's
with
**Palace
Quality**

COMPLETE
DRY CLEANING
AND
LAUNDRY SERVICE

PROTECT
FINE FURS,
WINTER GARMENTS
in our dehumidified
cold storage vault.

ONE CALL DOES IT
663-4185

24 Years Ago . . .

Thursday, May 8, 1947—

Helen Magdeline Hankerd is the recipient of the University of Michigan Regents Scholarship.

Twenty-two members of Chelsea Temple No. 117, of the Pythian Sisters attended the Pythian Sisters convention at the K. of C. hall on Washington St., in Ann Arbor, May. Attending from Chelsea were Mrs. Howard Boyd, Mrs. Carl Bagge, Mrs. Herbert Paul, Mrs. Robert Lantis, Mrs. Herman Hayes, Mrs. Elden Weinberg, Mrs. John Walz, Mrs. Fred Sager, Mrs. John Kilmer, Mrs. Wesley Smith, Mrs. Fred Gentner, Mrs. Harry Prudden, Mrs. John Metzger, Mrs. Otto Luick, Mrs. John Shieferstein, Mrs. Paul Pierce, Mrs. Henry Ahnemiller, Mrs. John Haselschwardt, Mrs. Stanley Beal, Mrs. Ed Frymuth, Mrs. Clara Hutzel, and Miss Amanda Koch.

Mrs. A. L. Steger, 402 S. Main St., received a recognition from the Washenaw County chapter of the American Red Cross on Friday, for her long and active service in their behalf.

The "20-30" Club of Salem Grove Community held the May meeting at the home of Mr. and Mrs. Reuben Hartman, Friday, May 2. Election of officers was held, with Dorr Whitaker being elected president; Kenneth Proctor vice-president; Irene Hartman, secretary; Betty Hinderer, treasurer; Irene Proctor, publicity chairman; and Lois Clark, cheer chairman.

34 Years Ago . . .

Thursday, May 6, 1937—

Fiftieth anniversary of Chelsea's Ladies Aid Society, which was started May 11, 1887 at the home of the pastor of St. Paul's church, the Rev. G. Robertus, was celebrated at a special service of the church this past Sunday morning. Present officers of the organization are Mrs. John Oesterle, president; Mrs. Alvin Vail, vice-president; Mrs. Philip Seitz, Jr., secretary; and Mrs. Lester Winans, treasurer. Past presidents of the society in the order of their service include Mrs. George Mast, Mrs. Jacob Schumacher, Mrs. Israel Vogel, Mrs. Fred Girbach, Mrs. Gottlieb Ahnemiller, Mrs. William Rheinfrank, Mrs. Mathew Alber, Mrs. George Wackenhut, Mrs. Elizabeth Wackenhut, Mrs. O. L. Hoffman, Mrs. Catherine Niehaus, Mrs. Theodore Wedemeyer, Mrs. George Wagner, Mrs. E. J. Feldkamp, Mrs. Jacob Klein, Mrs. Clara Hutzel, Mrs. Charles Lambrecht, Mrs. Adam Eppler, Mrs. Lewis Eppler, Mrs. W. H. Kusterer, and Mrs. J. N. Strieter.

At the 14th annual honors con-

"I REMEMBER"

BY THE OLD TIMER

From Mrs. E. Poole, Greeley, Colo.: With nostalgia, I remember winter evenings as a child. My grandparents raised us. Grandpa had an old pump-type organ. Grandpa played the violin. My brother and I sat on an old quilt behind the pot bellied coal heater.

I remember the tunes, such as: Turkey In The Straw, Rose of Tralee, Old Dan Tucker, and our favorite, The 7 Step. My brother and I called it AddleDiddle-De—and still do, when we think of it. The evenings generally ended with grandma getting a pan of earth-smelling apples from the root cellar, under the kitchen floor. And grandpa told stories of pioneer adventures.

From Mrs. Willard Chamberlin, Chester Depot, Vt.: What a surprise to read in your column of interest concerning living grandchildren of Civil War veterans. My father, Ralph Corliss, Jerico, Vt., celebrated his 86th birthday recently and is the SON of a Civil War veteran. His father, Asa Corliss, was a Union Army Soldier, wounded in battle. He died at the age of 91 when I was about 7 years old, but I still remember him. I was born in 1927, may be one of the youngest Civil War grandchildren, but in a country the size of ours, there must be some younger.

vacation program of the U. of M. held at Hill Auditorium in Ann Arbor on Friday, Frederick P. Strieter of Chelsea, a freshman in the College of Engineering, received honors. Mrs. Eleanor Lamberton, a senior in the School of Education, was elected to membership in Phi Kappa Phi, national scholastic honor society.

At the regular meeting of the common council held Monday evening, President Roy Harris made the following appointments for the coming year: J. E. Weber, president pro-tem; J. E. Weber, chairman of the finance committee; Conrad Lehman, chairman street committee; Ernest Adam, chairman, sidewalk committee; Dr. A. A. Palmer, health officer; Wm. Atkinson, marshal; Otto Schanz, deputy marshal; Howard Brooks, fire chief; Georgia Munro, deputy clerk.

**MONEY
TROUBLE?**
ONE PLACE TO PAY!
Credit Management
Service
662-2565
215 South Fifth Ave.
Ann Arbor
State Licensed and Bonded

LITTLE FLOWER SHOP

3151 WALTROUS RD., CHELSEA

FLOWERS - CORSAGES - PLANTS

For Weddings, Funerals, Special Occasions.

PHONE 475-8508

OPEN

For the Season
Wednesday thru
Sunday

11 a.m. to 9 p.m.



**MOTHER'S DAY
SPECIAL**
50¢ off
on a
Bucket of Chicken

DELICIOUS FRIED CHICKEN

Individual Chicken Dinners
Includes cole slaw, french fries

BUCKET OF CHICKEN

ROOT BEER BY THE GALLON

ALSO: SANDWICH & FOUNTAIN MENU

L. & R. DRIVE-IN

North Territorial and Dexter Townhall Rd.

PHONE 426-8668

(Call ahead and your take-out order will be waiting)

Established 1871 The Chelsea Standard Telephone GR 5-3581

Excellence Award By Michigan Press Association
1951-1952-1960-1964-1965-1968

Walter P. Leonard, Editor and Publisher

Published every Thursday morning at 300 North Main Street, Chelsea, Mich. 48118, and second class postage paid at Chelsea, Mich., under the Act of March 3, 1879.

ADDRESS CORRECTION REQUESTED

Subscription Rates (Payable in Advance)

In Michigan:	Outside Michigan:
One Year \$4.00	One Year \$8.00
Six Months \$2.25	Six Months \$4.50
Single Copies \$.15	Single Copies \$.20

Service men or women, anywhere, 1 year \$4.00

MEMBER
NATIONAL ADVERTISING REPRESENTATIVE
MICHIGAN NEWSPAPERS, INC.
167 Michigan Ave.
East Lansing, Mich. 48823
Association - Founded 1885

Track Team Wins Tuesday Over S. Lyon

Bulldog tracksters defeated the cindermen from South Lyon Tuesday evening, May 4, 82-36, in what Coach Bert Kruse termed a "tune up meet" in preparation for the big meet against Saline, which is tonight at the high school field.

First-place winners in the South Lyon meet included Randy Seitz, who tossed the shot 45' 2 1/4", and Mark Collins in the long jump, who leaped 19'4".

Roger Fitch placed first in the high jump, with 5'8", while Dan Hoover and Tim Lancaster tied for first in the pole vaulting event with a jump of 10'.

880 relay team, composed of Larry Gorton, Lee Ferguson, Bob Salyer, and Mitchell Heard placed first in 1:39.7, and Dave Buxton was first in the 880-yard run, with 2:10.3.

George Cameron was first in the mile run, in 5:07.3, while Jeff Hughes was first in the 100-yard dash in 10.7.

Kim Aronson was first in the 440-yard dash, in 52.1, and he also took top honors in the 220-yard dash in 23.3.

Jeff Hughes, Larry Gorton, Dan Hoover, and Mitchell Heard took top honors in the mile relay event in 3:41.9, to round out Chelsea's winning scores.

Girls Track Stars Continue Record Pace

Ladies on the girls track team at Chelsea High school met with "all comers," Friday afternoon, April 30 at the high school track. Teams from Dexter, Homer, East Jackson, and Grand Lake were on hand to challenge the Chelsea runners.

Janet Sibley took a first place in the high jump, with a jump of 5'. Lori Fritz placed third in that contest.

Vicky Myers won the shot put event in 31'2" for a new school record, while Anne Lewandowski placed third.

Janet Sibley placed first in the 220, setting a new school record of :26.9 in that event.

First-place honors went to the 440 relay team composed of Joan Yocum, Karen Reynolds, Alicia Pierson, and Janet Sibley. They ran that event in :56.2.

Chelsea's 880 relay team placed first also, composed of Karen Lingerfelt, Robin Terns, Pat Poertner, and Janet Sibley.

Next meet for the Chelsea girls is Saturday, May 15, at home. The meet will be an all comers meet, and it is not yet known how many teams will attend.

Protect Your Mailman

(Continued from page one)

with plenty of clean water, Schalles cautioned.

The postmaster made his plea in an attempt to prevent any problems that may arise concerning animals, and to allow the mail carrier to perform his duties, in the interest of better mail service.

Baseball Team Blasts Dexter In 12-5 Win

Chelsea's baseball team defeated number one ranked Dexter Tuesday evening, by the whopping score of 12-5.

Dexter took an early lead in the game, scoring all five runs in the first two innings. First three Dexter runs were all on walks, while the second two came following a fielder's choice, an error, and a single.

Wayne Welton, winning pitcher, came in to pitch in the second inning, with two men on. He walked a man, and allowed a man to score on a wild pitch. Following that ominous start, however, Welton gave up the only two hits that Dexter received, and struck out 12 batters in six innings.

Chelsea didn't get untracked until the fourth inning, when they scored nine runs, Ron Sweeney started the action by hitting a single. Wayne Welton got to first on an error, and Joe Aspiranti bunt singled, loading the bases. Dexter then gave up five straight walks. The big blow of the game, however, came when Randy Brier hit a grand slam home run, "as far as a country mile," the coach claims, to finish out the nine-run inning.

The Bulldogs picked up three more runs in the fifth inning on only one hit. Two errors, a walk, a hit batter, an interference call, and a single drove in three runs for Chelsea.

Although Coach Genske claimed that "walks were the story of the ballgame," as each team walked eight men in the early part of the game, Randy Brier was the game's real hero. Brier had two for four, and tallied five RBIs.

Chelsea starts their second round of the season, playing Dundee at home this afternoon, Thursday, on the high school field. Game time is 4 p.m.

The Bulldogs are presently half a game out of first place, with a .42 record, just behind Saline who holds a 6-2 conference record. Dexter is tied with Dundee and South Lyon, for third with 4-3. Milan is in fourth place with 3-4, followed by Lincoln, 2-5, and Novi, 1-5.

Thinclads Trample on Lincoln, 81-37

(Continued from page one)

Collins was second in the long jump with 19'7 1/2".

In the 880 relay, first-place Chelsea runners Larry Gorton, Mark Collins, Kim Aronson, and Jeff Hughes, ran that event in 1:35.9. George Cameron was first in the 880-yard run in 2:06.6, while Dan Hoover was second in 2:10.7.

First place in the 120-yard high hurdles was gathered by Mitchell Heard in :15.7, while Larry Gorton was second in :16.3.

Dave Buxton was first in the mile "run" in 5:07.3, followed by Jim McGinn in second in 5:21.8.

Jeff Hughes placed first in the 300-yard dash in :10.6, with Mark Collins in second at :10.6.

Winner in the 440-yard dash event was Kim Aronson in :51.9. Dan Hoover was third in :56.7.

First and second place in the 180-yard high hurdles were gathered by Larry Gorton and Mitchell Heard, respectively, in the close time of :21.5, and :21.6.

Chris Phinney was first in the two mile run in 11:32.8.

Chris Phinney was first in the 220-yard dash in :24.0, while Lee Ferguson was third in :25.5.

Mile relay took first place in 3:39.7. Members of that team are Mark Collins, George Cameron, Dave Buxton, and Kim Aronson.

Today Thursday, May 6, Chelsea faces their chief antagonist of the past few years, Saline, in a very important meet for both teams. Field events for this meet will start at 6 p.m., while running events start at approximately 6:45. The meet will be held on the Chelsea track.

This coming Tuesday, May 11, Chelsea will meet Dexter, at Chelsea in what may be the deciding meet in the dual meet standings for the season. This meet will start at 4 p.m.

Saturday, May 8, the team will take part in the Cardinal Relays at Michigan Center. All events, including field events, will be relay events. Field events will start at 3:30 with running events start-in at 7:30 p.m.

Sixteen teams will be entered with Northville, Haslett, Battle Creek, St. Phillip Mason, and Chelsea on the docket.

Soundarama Scheduled Next Thursday Evening

Chelsea High school music department will present their second annual "Sound-arama" Thursday evening, May 13, in the Chelsea High school auditorium.

"Sound-arama II" features all high school vocal and instrumental groups in a program that is designed to be light and entertaining.

Tickets may be obtained from any Chelsea High school student.

Most schemes for making money revolve themselves into the intelligent application of perspiration.



BICYCLE RACE WINNERS in Friday afternoon's event at Beach Junior High school, were, front row, from left, David Popovich, third place boys division; Scott Otto, second place, boys division; Bryce Flynn, first place, boys division; and Brenda Shadoan, first place girls division. Members of the Junior High school French Club, who sponsored the event, are second row, from left, Tony Robards, Pat Salyer, Dawn Albrecht, Kelly Bradbury, Delaine Seitz, Brenda Lovely, Annette Haken, Marie Fahrner, Lois Lovely, and Karen Tobin. Randy Johnson, a teacher at Beach school, and Mrs. Jane Cummings, third row, French teacher, officiated at the event.

Beach French Club Conducts Mini-Version of Bike Race

Every summer in France, a three-week, 2,500-mile bicycle race is held. The French Club of Beach school decided to hold a "mini" version of the famous French

race, Friday, April 30. The event was open to students in the 6th, 7th and 8th grades, and was held after school, while students raced around the circle drive. Each participant had to make three circuits of the course.

Mrs. Jane Cummings, French club advisor, who planned the event, and Randy Johnson, boys gym instructor, officiated at the race. Students competed in groups of three, and were timed for their performances.

Semi-finalists, who competed for

top honors in the race were Scott Otto, David Popovich, and Bryce Flynn in the boys race. Bryce Flynn was winner in the run-off, while Scott Otto was second, and David Popovich, third. Brenda Shadoan was winner in the girls race.

It is always easy to find an excuse for delaying hard work.

Character is what makes individuals do more than the law requires.

JV Baseball Team Loses Two Contests

Bullpup baseball players played two games in succession last week, and came out on the short end both times. Meeting Adrian freshmen on Thursday, April 29, the junior varsity team was defeated 19-5. That game with Saline, held the following afternoon, Friday, April 30, was likewise a defeat, 10-3.

According to JV coach Phil Bareis, in the Adrian game, "It was a case of being out-hit 14 hits to Chelsea's four." Mike Nadeau collected two hits, while Jeff Daniels had a triple, and John Mann a single.

Chelsea was again held to four hits in the Saline game, as John Mann, Jeff Daniels, Mike Nadeau, and Rick Miller collected the safeties.

This brought the JV record to one win, two losses.

Arrested on Charge of Being Disorderly Person

James Mickial Galuzka, 618 N. Fifth St., Ann Arbor, was arrested on S. Main St., Saturday, May 1, on a charge of disorderly person. Galuzka had accosted a citizen earlier, in an unruly fashion and had been reported to the police just before this arrest. At the time of his arrest, he was allegedly drunk and disorderly. He appeared in the 14th District Court before Judge Conlin on May 3, and pled guilty, for which he was fined \$35 and costs.

Mr. and Mrs. William L. Detling, 417 Wilkinson St., attended the wedding of Joseph Kramer, and Linda Lee Schrock, of Ypsilanti, Saturday evening, at St. John's Catholic church in Ypsilanti. Reception was held at the Labor Temple Hall in Ypsilanti.

Baseball Team Comes to Life, Defeats Saline

Chelsea's baseball team came back following two losses in succession to defeat number one ranked Saline, Thursday afternoon, April 29. Final score for the afternoon was 6-5.

The Bulldogs scored in the second inning on a single by Steve Flint, a walk to Aspiranti, a sacrifice by Todd Sprague, and a single by Mike Rossbach. Joe Aspiranti scored when Rossbach was thrown out at second.

Wayne Welton raised the number of Chelsea runs to three in the third inning, when he sent a home run flying over the left field fence. Welton came to life in the fifth inning to score another two runs for Chelsea as he homered following Randy Brier's single.

Winning run for the Bulldogs came in the sixth inning on a walk, an error a sacrifice, and a fly ball.

Saline scored four of their five hits in the second inning. The Saline team had only one hit, but made four runs, as a result of numerous errors on the part of the Chelsea team. In that inning, Chelsea had two errors, walked two, and had a hit batsman.

Saline's final run came in the third inning when a player walked, on loaded bases.

Tim Van Slambrouck, who relieved Ralph Stewart in the second inning with the bases loaded, and struck out the batter to end the inning, pitched what his coach termed a "superb" game. Van Slambrouck allowed Saline only three hits in five and one-third innings, and struck out 12 batters.

Steve Flint played a good game, as he was two for four, of which one was a double.

Subscribe today to The Standard!

SPECIALS

13 3/4-OZ. JAR SPARTAN
Spanish Peanuts . . . 49c

13-OZ. JAR SPARTAN
Mixed Nuts . . . 65c

16-OZ. BOX SPARTAN
Saltine Crackers . . 22c

Open 6 a.m. to 11 p.m. 7 Days a Week

GALLUP-SILKWORTH PUMP & PANTRY

295 S. Main St., Chelsea Phone 475-7051

MOTHER'S DAY GIFTS

FROM MOTHER'S FAVORITE STORE

The Selection Is Great!

GOWNS with Matching House Coats

Many, many from which to choose.

PANT SUITS by Toni Todd, Fritzie, Queen's Casual, Joan Curtis, Bobbie Brooks, Aileen and Pant Trends.

LADIES SLACKS and JEANS

The selection is amazing!

PANTY HOSE by Mojud

Beauty Mist, Evenknit

BLOUSES - SWEATERS - SHELLS

SWIM WEAR

It's Easy To Shop for Mother's Day at

DANCER'S

Chelsea's Friendly Dept. Store

EYES EXAMINED and GLASSES FITTED

For Appointment Call GR 5-5431

A. A. PALMER, M.D.
110 E. Middle St.
Chelsea, Mich.

Jiffy market COMPLETE SUPER MARKET

BIG ENOUGH TO SERVE YOU.....SMALL ENOUGH TO KNOW YOU!

Corner of SIBLEY & WERKNER RDS.....CHELSEA, MICHIGAN

7 AM - 10 PM
ONLY 7 DAYS A WEEK
PHONE 475-5701

SALE PRICES EFFECTIVE THURSDAY, MAY 6, THRU SUNDAY, MAY 9, 1971.

Store Hours Are 7 a.m. to 10 p.m. 7 Days A Week

Small Lean Tender SPARE RIBS 59c lb.	Large Jumbo FROG LEGS 89c lb.	Glendale SLICED BOLOGNA lb. pkg. 65c	TURKEY DRUMSTICKS FROZEN 33c lb.
---	--	---	---

LARGE LOAVES

KLEEN MAID BREAD 1 1/4-Lb. Loaf **18c**

<p>SPECIAL SALE!</p> <p>Borden's Ice Cream</p> <p>Half Gallon for Only 69c</p>	<p>HERSHEY'S</p> <p>Chocolate Syrup</p> <p>1-Lb. Can 19c</p>	<p>10-Oz. One-Way Bottles</p> <p>Pepsi-Cola</p> <p>8 pac 99c</p>
--	--	--

KRUNCHEE SUNSHINE

POTATO CHIPS . . Reg. Price 79c 14-Oz. Bag **65c**

ICE CUBES 49c bag	CIGARETTES \$3.39 CARTON	ONION SETS 39c lb.	2 Large Racks GARDEN SEEDS	CHARCOAL 20-Lb. Bag \$1.09
-----------------------------	------------------------------------	------------------------------	-----------------------------------	---

RISDON'S TOP QUALITY HOMOGENIZED

1/2 gal. **49c** **MILK** gal. **88c**

MARATHON GAS PUMPS

REGULAR **33.9** TOP QUALITY GAS! **37.9** PREMIUM

NOTE: Our Gas Prices INCLUDE ALL TAXES

Includes All Taxes

OPEN DAILY and SUNDAY, 7 a.m. to 10 p.m.

Ads
Taken
Till 5 p.m.
Tuesday

IT'S EASY TO
BUY-SELL-RENT-
HIRE & FIND WITH

WANT ADS

Just
Call
GR 5-3581

WANT ADS

The
Chelsea Standard

WANT AD RATES

PAID IN ADVANCE—All regular advertisements, 50 cents for 25 words or less, each insertion. Count each figure as a word. For more than 25 words add 2 cents per word for each insertion. "Blind" ads or box numbers add 50 cents extra per insertion.

CHARGE RATES—Same as cash in advance, with 15 cents bookkeeping charge if not paid before 6 p.m. Tuesday preceding publication. Pay in advance, send cash or stamps and save 15 cents.

DISPLAY WANT ADS—Rate, \$1.10 per column-inch single column width only, 8-point and 14-point type only. No borders or boldface type.

CARDS OF THANKS or MEMORIALS—Single paragraph style, \$1.00 per insertion for 50 words or less; 2 cents per word beyond 50 words. Minimum 1 inch.

COPY DEADLINE—5 p.m. Tuesday week of publication.

FOR REAL DOLLAR SAVINGS—be sure and see us before you buy any new or used car. Palmer Motor Sales, Inc. Your Ford Dealer for over 50 years. 2tf

FOR SALE—Corn planter, 2-row International. Ph. 475-7947. -46

All Insurance Needs

In the convenience of your own home — or mine

N. H. Miles, Allstate

Call GR 5-8334 after 6 p.m. 45tf

Hearthside Yarn Shop

5450 Conway Road

Yarns, needles, accessories

Free instructions in knitting and crocheting with follow-up assistance.

Orders taken for hand-made items.

Ph. 475-2014

36tf

CHELSEA JAYCEES annual rummage auction sale coming June 26. For pick-up of your articles call Glenn Weir, 475-7509, Dan Eder, 475-2663, or Mitch Zink, 475-7912. 44tf

3 BEDROOM home for sale, separate dining room. Full, walk-out basement. Two-car garage with upstairs. 8015 Forest. 426-8698. x45tf

COMPLETELY FINISHED 3-bedroom home on your lot for \$16,500. Well-Built Builders, 6130 Dexter-Pinekey Rd. Ph. 426-4811. Model open Sunday. 47

FOR SALE—4 br 1 1/2 bath, split level, 15 x 24 ft. sliding doors to nicely landscaped yard; kitchen with disposal and stove; carpet, drapes most rooms; attached 2-car garage; walk to elementary school. Phone 475-8527. -46

Public
Nursery Auction!
Sunday, May 9
beginning at 2 p.m.

Evergreens, shrubs and trees, all kinds and sizes. Blue Spruce, Japanese Yews, Mountain Ash, Holly, Sunburst Locust, Red Maple, Rhododendrons, Red Barberry, flowering trees, etc.

All plants fresh dug and ready to go. Buy at your price—why pay more? Leave anytime. Inspection invited.

We guarantee 50-80 and will deliver.

Mason's Nursery

Phone 429-5084
8794 Macon Rd., Saline, Mich.
1/4 mile south of cemetery x46tf

WANT ADS

BOARDING, trimming, training. Town and Country Kennels, Jackson Rd. at Baker. NO 8-7200. 7tf

Gem Travel Trailers
and Campers

PICK UP COVERS

4" \$100.00

26" \$179.00 and up

Triangle Sales

Chelsea 475-4302 40tf

CLOGGED
SEWER

Reynolds Sewer
Service

We Clean Sewers Without Digging. Drains Cleaned Electrically. FREE ESTIMATES. 2-YEAR GUARANTEE. Phone Ann Arbor NO 2-5277. "Sewer Cleaning Is Our Business—Not a Side Line" 38tf

FOR SALE—With this adv., \$50 off on Browning Mark II base station. Special sale. Accessories available. Franchised dealer. 6748 Peckins Rd. See George. -46

5 ACRES for Sale—2 miles north, paved road, half wooded. Phone 475-3739. -47

KNAPP SHOES

For Cushion Comfort

Robert Robbins

475-7282 48tf

TV on the Blink?

Call Porter's Expert TV Service. Reasonable TV house call rates, repairs in the home if possible. Complete sale and installation of antennas. Also a fine selection of Solar color Admiral TV sets on hand. 3 year warranty on picture tube, 1 year free service. For prompt, courteous service on all makes of color or black & white call: 44tf

PORTER'S TV

475-8380

212 Buchanan Chelsea 46

2-CYCO FUEL

For All 2-Cycle Engines

WHITE GAS

Available at

Gateway

Sports Centre, Inc. 45tf

CAR RENTAL by the day, week-end, week or month. Full insurance coverage, low rates. Call Lyle Christwell at Palmer Motor Sales GR 5-3271. 25tf

FORMAL WEAR

RENTAL SERVICE

Proms - Weddings - Special Events
6 different colors.

Foster's Men's Wear

43tf

Dandelions

Are Blooming

Now is the time to apply Turf Builder Plus 4 and Turf Builder Plus 2.

Chelsea Hardware

Phone GR 9-6311 46

WANT ADS

ROBERT PATRICK for home improvement, building and maintenance. Ph. 475-7460. 45tf

HAMMOND ORGAN teachers wanted to teach in their own homes. Call Grinnell Brothers, Ann Arbor, 682-5687. 34tf

CALL FRANK for all your carpet cleaning jobs, morning or week-end. Needs only 3 hours to dry. Only 10¢ per square foot. Phone now for free estimate, 761-4328. All work guaranteed. 33tf

PIANO TUNING, Chelsea and area. Facilities for reconditioning and rebuilding. Used piano sales; reconditioned grands and verticals. E. Eklund, 426-4429. x50tf

Contractor Servicing
Chelsea, Dexter and
Manchester Areas

Complete Home Remodeling Inside and Outside

Specializing in extra living space, recreation rooms, kitchens and paneling. Installing all aluminum products, 5" eavestroughs, custom-made awnings, windows and doors, aluminum siding in many selected colors and styles.

Please Call

DALE COOK

Chelsea 475-8863 20tf

Seamless

Aluminum Gutters

White or brown.

5-Year Guarantee.

WILSON METAL SHOP

428-8468 - Manchester x40tf

PATCHING and PLASTERING. Call 475-7489. 33tf

USED CARS

'70 Ford 4-dr.

'70 Mustang Fastback

'69 LTD 2-dr. Hardtop, air

'69 Torino GT

'69 Ford Station Wagon

'68 Chev Impala (2)

'63 Ford Convertible

'62 Falcon Wagon

'62 Fairlane 500 4-dr.

TRUCKS

'67 International 1/2 ton pick-up. \$795

'67 Ford 1/2 ton

'67 Chevrolet 1/2 ton

'65 Ford 1/2 ton

PALMER FORD

Open Mon., Wed., Thurs., Till 9:00

Chelsea GR 5-3271 x44tf

UNUSUAL

OPPORTUNITY

for someone

interested in

EDUCATION

The Dexter Community Continuing Education program is seeking a part-time co-ordinator. Job will include scheduling courses and contacting teachers.

Applicant must be available Monday, Tuesday, and Thursday evenings, from 6 to 9 p.m., and Saturday morning from 9 a.m. until 12.

For further information phone 426-2821. x46

CHELSEA JAYCEES annual rummage auction sale coming June 26. For pick-up of your articles call Glenn Weir, 475-7509, Dan Eder, 475-2663, or Mitch Zink, 475-7912. 44tf

LOST—All white male cat, name Snowball. Missing since April 27. Reward. If you have any information. Phone 475-7609. 46tf

ELECTROLUX

VACUUM

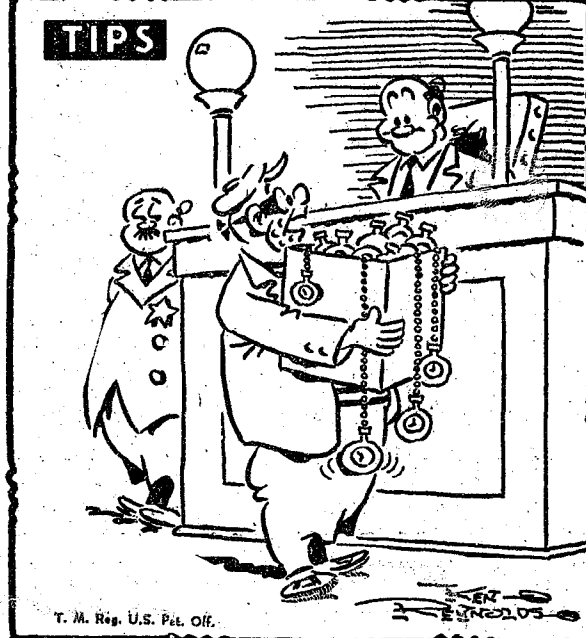
CLEANERS

SALES and SERVICE

JAMES COX

Ph. 428-2931 or 428-8221

Manchester



"You look like a fairly intelligent man—now what's wrong with selling watches with a Standard Want Ad?"

WANT ADS

CHELSEA JAYCEES annual rummage auction sale coming June 26. For pick-up of your articles call Glenn Weir, 475-7509, Dan Eder, 475-2663, or Mitch Zink, 475-7912. 44tf

CRIB FOR SALE, youth size, \$35, in new condition. Call 475-2491. -46

Real Estate For Sale

BRAND NEW — 3-bedroom brick ranch. Perfect country view. 2 ceramic baths, 2 fireplaces, large (unfinished) rec-room, 2-car attached garage. \$48,500.

7 1/2 ACRES — All inside village limits. Has 3-bedroom house, garage, 745 feet of railroad frontage. \$30,000. Terms.

BUILDING LOT — One mile east on Old US-12, 135 feet of frontage, 14' wide. \$4000.

10 ACRE LOTS—Several to choose from. 2 1/2 miles out. From \$7,500 up.

CLARENCE WOOD

BROKER

Efficient PERSONAL Service

646 Flanders St.

Phone 475-2033 45tf

Real Estate

For Sale

LISTINGS NEEDED

Call

Kern Real Estate

Phone 475-8563 -39tf

Listings Wanted

Sold out of Chelsea properties. Have buyers waiting.

NO RENTALS

R. D. Miller

REAL ESTATE

Real Estate Broker

475-7311

15775 Cavanaugh Lake Rd.

Chelsea, Mich. 44tf

WORK SHOE

HEADQUARTERS

Famous Red Wing Brand

\$12.95 to \$26.95

Foster's Men's Wear

34tf

FOR SALE — '54 Dodge pickup, runs good; make an offer. Phone 475-7673. -x46

Time for a Change...

... from old, worn down tires to SAFE new ones! Come in today!

Your tires have been taking a real beating... How much longer can they stand up? Better to be safe than sorry! Trade them in on a new set.

PURE OIL PRODUCTS

JIM'S PURE SERVICE

Tires — Batteries — Tune-Ups — Brake Service — Wheel Alignment

PHONE 475-2822

501 SOUTH MAIN

40tf

40tf

40tf

40tf

40tf

40tf

40tf

40tf

40tf

40tf

40tf

40tf

40tf

WANT ADS

PRINTING from John's Shop—for weddings, anniversaries or any occasion. Satisfaction guaranteed. Prompt service, reasonable prices. Phone 475-7500. -49

EXPERIENCED CHILD CARE in my home, any time. Ph. 426-4102. 41tf

PIANO TUNING at savings! New man in area offering introductory rates to build clientele. 739-0130. 30tf

USED CARS

1970 Dodge Challenger 2-dr. hardtop \$2295

1969 Olds Delta 88 Royal 2-dr. hardtop, vinyl top, air cond. \$2895

1969 Olds Delta 88 4-dr. hardtop, vinyl top \$2295

1969 Dodge Polaro 4-dr. sedan (air cond.) \$1995

1968 Olds 98 Luxury Sedan (air cond.) \$2395

1968 Ford LTD 2-dr. hardtop \$1595

1968 Olds Delta 4-dr. hardtop \$1595

1968 Dodge 4-dr. sedan \$1395

1967 Buick Skylark 2-dr. hardtop \$1395

1967 Mercury Monterey 2-dr. hardtop (4-speed) \$ 995

1966 Olds Delta 88 2-dr. hardtop, vinyl top \$1095

1966 Pontiac Grand Prix 2-dr. hardtop \$1095

1966 Olds Cutlass 4-dr. sedan \$995

1965 Chev Corvair 2-dr. hardtop \$495

1965 Chev Corvair 2-dr. hardtop \$495

1965 Chev Corvair 2-dr. hardtop \$495

1965 Chev Corvair 2-dr. hardtop \$495

1965 Chev Corvair 2-dr. hardtop \$495

1965 Chev Corvair 2-dr. hardtop \$495

1965 Chev Corvair 2-dr. hardtop \$495

1965 Chev Corvair 2-dr. hardtop \$495

1965 Chev Corvair 2-dr. hardtop \$495

1965 Chev Corvair 2-dr. hardtop \$495

1965 Chev Corvair 2-dr. hardtop \$495

1965 Chev Corvair 2-dr. hardtop \$495

1965 Chev Corvair 2-dr. hardtop \$495

1965 Chev Corvair 2-dr. hardtop \$495

1965 Chev Corvair 2-dr. hardtop \$495

1965 Chev Corvair 2-dr. hardtop \$495

1965 Chev Corvair 2-dr. hardtop \$495

1965 Chev Corvair 2-dr. hardtop \$495

1965 Chev Corvair 2-dr. hardtop \$495

1965 Chev Corvair 2-dr. hardtop \$495

1965 Chev Corvair 2-dr. hardtop \$495

1965 Chev Corvair 2-dr. hardtop \$495

1965 Chev Corvair 2-dr. hardtop \$495

1965 Chev Corvair 2-dr. hardtop \$495

1965 Chev Corvair 2-dr. hardtop \$495

1965 Chev Corvair 2-dr. hardtop \$495

1965 Chev Corvair 2-dr. hardtop \$495

1965 Chev Corvair 2-dr. hardtop \$495

1965 Chev Corvair 2-dr. hardtop \$495

1965 Chev Corvair 2-dr. hardtop \$495

1965 Chev Corvair 2-dr. hardtop \$495

1965 Chev Corvair 2-dr. hardtop \$495

1965 Chev Corvair 2-dr. hardtop \$495

1965 Chev Corvair 2-dr. hardtop \$495

1965 Chev Corvair 2-dr. hardtop \$495

1965 Chev Corvair 2-dr. hardtop \$495

1965 Chev Corvair 2-dr. hardtop \$495

1965 Chev Corvair 2-dr. hardtop \$495

1965 Chev Corvair 2-dr. hardtop \$495

1965 Chev Corvair 2-dr. hardtop \$495

WANT ADS

WANT ADS

WANT ADS

WANT ADS

Difficulties of Finding Justice For Blacks Examined on TV

G. Schiller Considered for Citation

SEE US for transit mixed concrete, Klump Bros. Gravel Co. 10000 Chelsea 475-2530, 4920 Loveland Rd., Grass Lake, Mich. x406f

TRAVEL TRAILERS — 13-ft. and up; 10x55 ft. trailers. John R. Jones Trailer Sales, Gregory, Mich. Phone 498-2655. x43f

FOR SALE — 2.3 acres with private drive off Old US-12 West \$6,500. Phone 475-8904. x44tf

HORSE SHOEING — Experienced, corrective trimming and shoeing. Prompt service. Bortum shoes, Buck Myer. Phone 1-517-546-1510. x47

WANTED
TYPIST
Accurate, 55-60 wpm.
Apply in Person

COMPLETE SANITATION SERVICE — Septic tanks cleaned and repaired. Licensed and bonded. Call anytime. Munth (517) 596-2848 or (517) 590-2118. x48

WANTED — Plaster patch work, brick work, also block work. Phone 475-7515, 218 E. North St. x48

TOP SOIL for sale. Ph. 475-7534. x48

FARM FOR SALE — By owner, 84 acres, 3-bedroom house with outbuildings. Grass Lake township. Phone (517) 522-4859. x46

FOR SALE — Trailer, 8x10 steel plated deck with stake pockets complete with new racks. 8.50x20 10-ply tires complete with spare. 7729. x46

WANTED — Dental assistant, Chelsea area. Send resume to Box A-29, in care of Chelsea Standard. x46

CREATIVE BABYSITTING — in my home weekdays. Full or part-time. 475-7480. x47

FOR SALE — 2 VW's, one '60, one '63. Good bodies, one needs motor repair. \$300 for both. Also electric stove, good condition, \$40. A baby bath-tub, like new, \$20. 475-1285, anytime. x46

GARDENS PLOWED and tilled. C. Trinkle, 320 East St. Ph. 475-7557. x44f

PIANOS TUNED — Players and shed organs rebuilt. D. Harvey, 1201 Shady Lane, Tecumseh. 423-8045 after 4 p.m. x44f

FOR SALE — 2-bedroom, 12x60, mobile home, AMC, 1969, excellent condition. Phone 475-7445, after 5 p.m. x47

WANTED — Gardens to plow. Phone 475-8759 after 4 p.m. x47

ARTISTS! ATTENTION! Flushing Art Show, Saturday, June 5, 1971. Enter now. For applications contact Mrs. J. St. Johns, 2301 Seymour Rd., Flushing, Mich. 48433. 313-659-8866. x47

WANTED — Babysitting by high school girl during summer months. Phone 475-8431. x48

WANTED TO RENT — Cottage or home for summer and early fall, for family of 6. Please call 662-5442. x47

FOR SALE — Decca electric guitar used one month. Also, size 9E football shoes, only used once. Phone 683-8228. x46tf

FOR SALE — 7 h.p. electric tractor, 1968 Garden Mark mower, snowblade and tire chains; 6 h.p. riding mower; go-kart frame; mikes, frame; two 3 h.p. Briggs & Stratton engines. Call 475-2832 after 6 p.m. x46

REMEMBER MOM — Sunday, May 9 is Mother's Day. Remember her with flowers from Kiwanis Flower Sale Friday and Saturday at Heydlauffs. x45

BABYSITTING by elderly woman in her own country home, days for beginner. 479-6052. x46

FOR SALE — Conn trombone. Good for beginner. 479-6052. x46

TOP SOIL, railroad ties, for sale. 475-9211, after 3 p.m. x49

SHINGLE ROOFING, all types, barns, and houses. Arnie Rae, 662-1753. x52

AVAILABLE IN JUNE — Furnished first-floor apartment, 2 rooms and bath, plus screened-in porch. \$90 month, with damage deposit and references required. No children or pets please. Write Box 46A-6 Chelsea Standard. x46f

FREE — Small female spayed terrier housed. Family pet. Has had its shots. Good watch dog. Phone 596-9291, or inquire at 11333 Hoffman Rd. x46

REMEMBER MOM — Sunday, May 9 is Mother's Day. Remember her with flowers from Kiwanis Flower Sale Friday and Saturday at Heydlauffs. x45

DOMESTIC refrigerator-freezer, garbage disposer service. Call Bill. 426-8314. x47

WANT ADS

CLEAN rugs, like new, so easy to do with Blue Lustre. Rent electric shampooer \$1. Dancer's 46

FOR SALE — 1966 Ford Galaxy, white, automatic, with power steering. Cleanest car in Chelsea. Phone 475-8063. x46

NEW Hanson trailer sprayer, 300 gal., 8-row hose boom, 8-way control. \$600. Phone 428-8892, Arthur Fehr, Manchester. x46

FOR RENT — 3 bedroom, modern country house. \$150 per month, 7 miles from Chelsea. Call 475-2044 after 6 p.m. x46

FOR SALE — Window air conditioner, 9,500 btu, good condition. Phone 475-9148. x48

REMEMBER MOM — Sunday, May 9 is Mother's Day. Remember her with flowers from Kiwanis Flower Sale Friday and Saturday at Heydlauffs. x45

BABYSITTING by elderly woman in her own country home, days for beginner. 479-6052. x46

FOR SALE — Conn trombone. Good for beginner. 479-6052. x46

TOP SOIL, railroad ties, for sale. 475-9211, after 3 p.m. x49

SHINGLE ROOFING, all types, barns, and houses. Arnie Rae, 662-1753. x52

AVAILABLE IN JUNE — Furnished first-floor apartment, 2 rooms and bath, plus screened-in porch. \$90 month, with damage deposit and references required. No children or pets please. Write Box 46A-6 Chelsea Standard. x46f

FREE — Small female spayed terrier housed. Family pet. Has had its shots. Good watch dog. Phone 596-9291, or inquire at 11333 Hoffman Rd. x46

REMEMBER MOM — Sunday, May 9 is Mother's Day. Remember her with flowers from Kiwanis Flower Sale Friday and Saturday at Heydlauffs. x45

DOMESTIC refrigerator-freezer, garbage disposer service. Call Bill. 426-8314. x47

East Lansing — In America 1971, can a black man receive true justice is a court of law, in prison or in post-prison life? Black Journal takes a critical look at the American judicial system from a black perspective at 4:30 p.m. Sunday, May 9 on WMSB (Channel 10), Michigan State University television.

In the first segment of a five-part program, legal experts examine the difficulties facing blacks in American courts — the virtual impossibility of receiving trial by peers, the tremendous backlog of cases, lack of money for obtaining competent legal counsel and the pressures to accept lesser pleas.

From the discussion on courts, the Journal cameras move inside San Quentin and Soledad prisons to interview black prisoners of their reasons for being there, discrimination within the prisons, rehabilitation programs aimed at enabling them to establish productive lives upon release.

In the final three segments of the program Journal correspondents interview friends and associates of Angela Davis, the mother of one of the Soledad Brothers and the lawyers who are defending the remaining three living Soledad Brothers.

(Continued from page one)

that although the young man showed a great deal of common sense in the rescue, he had never been a fireman. Because he often knew the location of a fire before the firemen did, due to his mother's job, he has on occasion assisted at fires in the area.

Chelsea patrolmen David Peobles and Robert Browning, who were at the scene of the fire, had been forced back by the smothering clouds of smoke which they encountered when they attempted to enter the home to look for occupants. Mrs. Schiller lived alone but firemen and police officers were uncertain at the time the fire was discovered who was inside the building.

Uniformed Sheriff's Deputy Robert Acillo, who was at the scene with the two Chelsea police officers, called the rescue "really remarkable." He plans to recommend Schiller for a civilian bravery citation, an award given by the Sheriff's Department for lifesaving action taken by a person who is not a police officer.

The bedroom where the fire occurred was extensively damaged, and the remainder of the house sustained smoke damage. Chelsea fire firemen said. Fire Chief Jim Gaken declined to discuss any plans which the fire department may have for honoring Schiller, adding that final decisions have not yet been made concerning an appropriate tribute.

M-Teens Needed

(Continued from page one)

would like to join in the fall, are encouraged to contact either of the above two women. They should attend the orientation session in May at any rate, and wait until fall to begin their service.

TODAY'S THOUGHT

By LOUIS BURGHARDT

We hear a lot these days about special groups wanting and sometimes demanding special rights . . . There is only one special group we can think of that is really entitled to special rights. But that group — with few exceptions — ever ask or expect special favors.

This special group includes the poor and the rich. They are loving, thoughtful, considerate. They are seen everywhere. Though some are "deprived," they rarely ask things for themselves. They think of others ahead of themselves. When something needs to be done, they are the first to be called on. In emergencies, they are the first to take over. As individuals, they are the busiest, most active and the most important people in the world. If it were not for them, NONE of us would be here . . .

We honor them individually on Mother's Day — the mothers everywhere . . . BURGHARDT FUNERAL HOME, 214 East Middle St., Chelsea, Mich. Phone GR 5-4111.

HELP WANTED

We want someone in this area who has

Mechanical Ability for sales and service

Earnings and opportunity is quite high on this job regardless of part-time or full-time. No investment. For complete information write:

MR. C. E. WOODARD
526 Second
Ann Arbor, Mich. 48103

An Equal Opportunity Employer x47

GET YOUR swimming pool ready for summer. Complete line of pool chemicals. Gambles. Ph. 475-7472. x49

CAR & TRUCK LEASING. For details see Lyle Christwell at Palmer Motor Sales, GR 5-3271. x49f

FOR SALE — 7' x 4' Brunswick pool table. Phone 426-8547 after 5 p.m. x43tf

Chelsea Standard

300 N. Main St. Ph. GR 5-3581

YOUNG SPRUCE and Pine trees, you dig, your choice, \$2 each. Czapl's Orchard, 1817 Rank Rd., seven miles west of Chelsea on Old US-12, one mile south on Rank Rd. Open 9 a.m. - 1 p.m. weekdays, and 9 a.m. - 6 p.m. week-ends. x46

Little Flower Shop

3451 Waltrous Rd., Chelsea
Phone GR 5-8503

Flowers, corsages, arrangements and plants.

Open daily except Sunday, 9 a.m. to 6 p.m.

Mrs. John Rudd and Mrs. Joe Tobias should stop by to pick up their free gift. x45

SALES — Cosmetics, furs and wigs. Full time and part-time. High commission, and management available. Phone 668-9060. x46

HELP WANTED — Assistant waste water treatment plant operator. Apply Chelsea Municipal Building, 104 E. Middle, Chelsea. x46

NEED 3 MAN and wife teams who would like to earn \$2,000 to \$3,000 per month. For appointment call collect 1-517-764-1261 after 6 p.m. x48

FANCY SANDWICHES of colored bread for graduation, weddings, parties, etc. Reasonable. Phone 475-8883. x47

FOR SALE — Ladders. 1 40-ft. alum., 1 12-ft. alum., 1 24-ft. wood, 1 5-ft. wood. \$100 for all. Phone 475-1228 anytime. x47

WANTED — Mature, working couple urgently needs nice, unfurnished one-bedroom apartment or small house in Chelsea area. Phone after 6:30 p.m. 665-7697. x45f

STANLEY'S TREE SERVICE

Trimming, removals, cabling, bracing, surgery, etc.

FREE ESTIMATES

Phone 428-8967

If no answer, ph. 428-8066 x43f

GARAGE SALE

Five Families

Fri. & Sat., May 7-8

9 a.m. to 6 p.m.

King horse trailer, some western tack. Case farm tractor with plow, old wooden vise, dishes, lamps, tires (good for spares), like new mounted snow tires (3.25x14), child's pool, table, pictures, Olsen rug (26'x50'), trouble lights, lots more. Everything to go. Look it over, make offer. Last chance, last sale. 18250 Bush Rd., north of end of Pierce Rd., Chelsea. x46

For Mother's Day
Plants from a small child to mother, none higher than 75c

LITTLE FLOWER SHOP
GR 5-8503

FOR SALE — 14-ft. fiberglass boat with 40 h.p. electric start Evinrude motor and trailer, can't top. Excellent condition. \$850. Phone 475-2402. x46

ACTION GROUP YARD SALE, Saturday, May 15, 218 McKinley, Chelsea. Phone 475-8465 or 475-8012 for pick-up. x47

GAIRAGE SALE — Two families. Whirlpool ironer, Kelvinator electric stove, many household furnishings and appliances. Adult and children's clothing, four bicycles, swimming pool. Many more items. Friday and Saturday, May 8 and 9, from 9 to 5. Come have coffee and browse. 206 Congdon, corner of South, Chelsea. x46

BY OWNER, DEXTER — 3 bedrooms, dining room, family room, full, walk-out basement. Two car garage with upstairs. 8015 Forest. 426-8698. x46f

FOR SALE — Used LaBlanc clarinet. Phone 475-8128. x46

GARAGE SALE

Five Families

Fri. & Sat., May 7-8

9 a.m. to 6 p.m.

King horse trailer, some western tack. Case farm tractor with plow, old wooden vise, dishes, lamps, tires (good for spares), like new mounted snow tires (3.25x14), child's pool, table, pictures, Olsen rug (26'x50'), trouble lights, lots more. Everything to go. Look it over, make offer. Last chance, last sale. 18250 Bush Rd., north of end of Pierce Rd., Chelsea. x46

For Mother's Day
Plants from a small child to mother, none higher than 75c

LITTLE FLOWER SHOP
GR 5-8503

FOR SALE — 14-ft. fiberglass boat with 40 h.p. electric start Evinrude motor and trailer, can't top. Excellent condition. \$850. Phone 475-2402. x46

ACTION GROUP YARD SALE, Saturday, May 15, 218 McKinley, Chelsea. Phone 475-8465 or 475-8012 for pick-up. x47

GAIRAGE SALE — Two families. Whirlpool ironer, Kelvinator electric stove, many household furnishings and appliances. Adult and children's clothing, four bicycles, swimming pool. Many more items. Friday and Saturday, May 8 and 9, from 9 to 5. Come have coffee and browse. 206 Congdon, corner of South, Chelsea. x46

BY OWNER, DEXTER — 3 bedrooms, dining room, family room, full, walk-out basement. Two car garage with upstairs. 8015 Forest. 426-8698. x46f

FOR SALE — Used LaBlanc clarinet. Phone 475-8128. x46

GARAGE SALE

Five Families

Fri. & Sat., May 7-8

9 a.m. to 6 p.m.

King horse trailer, some western tack. Case farm tractor with plow, old wooden vise, dishes, lamps, tires (good for spares), like new mounted snow tires (3.25x14), child's pool, table, pictures, Olsen rug (26'x50'), trouble lights, lots more. Everything to go. Look it over, make offer. Last chance, last sale. 18250 Bush Rd., north of end of Pierce Rd., Chelsea. x46

For Mother's Day
Plants from a small child to mother, none higher than 75c

LITTLE FLOWER SHOP
GR 5-8503

FOR SALE — 14-ft. fiberglass boat with 40 h.p. electric start Evinrude motor and trailer, can't top. Excellent condition. \$850. Phone 475-2402. x46

ACTION GROUP YARD SALE, Saturday, May 15, 218 McKinley, Chelsea. Phone 475-8465 or 475-8012 for pick-up. x47

GAIRAGE SALE — Two families. Whirlpool ironer, Kelvinator electric stove, many household furnishings and appliances. Adult and children's clothing, four bicycles, swimming pool. Many more items. Friday and Saturday, May 8 and 9, from 9 to 5. Come have coffee and browse. 206 Congdon, corner of South, Chelsea. x46

BY OWNER, DEXTER — 3 bedrooms, dining room, family room, full, walk-out basement. Two car garage with upstairs. 8015 Forest. 426-8698. x46f

FOR SALE — Used LaBlanc clarinet. Phone 475-8128. x46

GARAGE SALE

Five Families

Fri. & Sat., May 7-8

9 a.m. to 6 p.m.

King horse trailer, some western tack. Case farm tractor with plow, old wooden vise, dishes, lamps, tires (good for spares), like new mounted snow tires (3.25x14), child's pool, table, pictures, Olsen rug (26'x50'), trouble lights, lots more. Everything to go. Look it over, make offer. Last chance, last sale. 18250 Bush Rd., north of end of Pierce Rd., Chelsea. x46

For Mother's Day
Plants from a small child to mother, none higher than 75c

LITTLE FLOWER SHOP
GR 5-8503

FOR SALE — 14-ft. fiberglass boat with 40 h.p. electric start Evinrude motor and trailer, can't top. Excellent condition. \$850. Phone 475-2402. x46

ACTION GROUP YARD SALE, Saturday, May 15, 218 McKinley, Chelsea. Phone 475-8465 or 475-8012 for pick-up. x47

GAIRAGE SALE — Two families. Whirlpool ironer, Kelvinator electric stove, many household furnishings and appliances. Adult and children's clothing, four bicycles, swimming pool. Many more items. Friday and Saturday, May 8 and 9, from 9 to 5. Come have coffee and browse. 206 Congdon, corner of South, Chelsea. x46

BY OWNER, DEXTER — 3 bedrooms, dining room, family room, full, walk-out basement. Two car garage with upstairs. 8015 Forest. 426-8698. x46f

FOR SALE — Used LaBlanc clarinet. Phone 475-8128. x46

RICK'S MARKET

M-52, North of Chelsea "Your Spartan Store" Phone 475-2898

Open 8 a.m. to 10 p.m. 7 Days A Week With Everyday Low Discount Prices

COME SEE, SHOP & SAVE

FRESH, CRISP
HEAD LETTUCE
2 for 45¢

JONATHON - McINTOSH
APPLES
3 lbs. 49¢

SPARTAN
BUTTER
1-Lb. Pkg. 79¢

SPARTAN GRADE A
EGGS
1 Doz. Large 49¢
1 Doz. Medium 45¢

SPARTAN
BREAD
4 loaves \$1

MILK
1/2 gal. 49¢

Cigarettes
Your favorite brands.
35¢ pkg.
\$3.35 crtn.

HUNT'S
CATSUP
1-Lb., 4-Oz. Bottle 37¢

SHUREFINE
Tomato Juice
46-Oz. Can 33¢

Shurefine Whole Kernel Golden
SWEET CORN
17-Oz. Can 2 for 39¢

FRESH
TOMATOES
39¢ lb.

COSSO Carpet Cleaning

May is spring cleaning time! Your carpeting deserves special attention. We recommend Host, the new method of cleaning carpets without water. The carpet is dry and ready to walk on immediately. Use our Host Electric Up-Brush. It's easy. Clean 40 sq. yds. only \$9.95. Phone for information.

MERKEL BROTHERS
Phone 475-8621

AFTER SCHOOL



"Mom, I'm hungry!" When you hear those familiar words, delicious milk is the best answer. It's a satisfying, healthful treat, and the youngsters love it. Be sure to keep plenty of milk on hand.

WEINBERG DAIRY
Phone GR 5-5771

Police Apprehend Army AWOL on Routine Stop

Roy Eugene Skinner, of Adrian, was arrested Thursday evening, April 29, on W. Middle St., on a charge of being absent without leave from the U. S. Army since January. Skinner had been stopped for a white tail light, and a defective muffler, and in the course of a routine warrant check in the LIEN system, it was found that the Army wanted him for being AWOL. Skinner was arrested and transported to the Washtenaw County Jail, where he was lodged until Military Police from Detroit could pick him up.

Home on Leave

Pfc. William E. Davis, USMC, who spent a three-week leave with his parents, Mr. and Mrs. Prentiss Davis, left Thursday morning for Arlington, Va., where he expects to attend school for six weeks before being assigned to foreign duty. In his honor, 33 relatives and friends dined at the Frontier Beef Buffet in Ann Arbor Monday evening, April 26.

BANK AUTO LOANS ARE BEST!



ANY TRIP YOU MAKE will be more pleasant, if the car you drive is financed the Bank Way — economically, conveniently and with local people.

CHELSEA STATE BANK

Member Federal Reserve System FDIC Member Federal Deposit Insurance Corp.

District Court Proceedings

Week of April 26-30

In the 14th District Court this past week, Robert Franklin Holdrege, pleaded guilty to a charge of driving under the influence of alcohol. He was referred to probation, and the Highway Safety Program. Sentencing will be May 25 in Saline.

William Creech pleaded guilty to being a minor in possession of alcohol. He paid \$100 fine and costs, or spend 10 days in jail. He was committed to the County Jail.

Paul E. Kramer, Dexter, was sentenced on a charge of driving under the influence of alcohol. He paid \$125 fine and costs, or spend 30 days in jail. He was to attend one session of the Safety Action Program.

Thomas J. Tolbert, Jr., Detroit, was found guilty on two charges, driving under the influence of alcohol, and being a minor in possession of alcohol. He paid \$125 fine and costs for the first count, and \$35 for the second.

Richard George All, Whitmore Lake, pleaded guilty to driving under the influence of alcohol. He was referred to the PSI, probation, and the alcohol program. Sentencing is to be May 26 in Chelsea. His driver's license was given to the Court.

Michael Metro pleaded guilty to a charge of speeding 110 mph in a 70 mph zone.

James Bulew, Ann Arbor, pleaded guilty to driving on a revoked license. He paid \$75 fine and costs, and must spend three days in the County Jail.

Robert Greenfield, Saline, waived examination on a charge of possession of LSD. He was bound over to Circuit Court.

Glen R. Macomber, Saline, pleaded guilty to speeding 40 mph in a 25 mph zone. He paid \$20 fine and costs.

James E. Diffenbaugh, Adrian, pleaded guilty to passing on a marked hill. He paid \$15 fine and costs.

Larry Bryan, Milan, pleaded guilty to a charge of driving under the influence of alcohol. He will be sentenced June 8.

Week of April 19-24

In the 14th District Court this past week Theodore Laski, Whitmore Lake, pleaded guilty to a charge of being drunk and disorderly. He paid \$35 fine and costs, on penalty of 3 days in jail.

Robert R. Mating, Dearborn, pleaded guilty to speeding 46 mph in a 25 mph zone. He paid \$32 fine and costs.

Dale Handy, Saline, pleaded guilty to unnecessary noise. He paid \$5 costs.

Harold Miller, Belleville, pleaded guilty to speeding 50 mph in a 35 mph zone. He paid \$20 fine and costs.

Gerald Hieber, Saline, pleaded guilty to having expired motorcycle plates. Case was dismissed on payment of \$5 costs.

James Davis, pleaded guilty to being drunk and disorderly. He paid \$35 fine and costs on penalty of spending 3 days in jail.

James Murphy, Westland, was found guilty of a charge of impaired driving. Case was adjourned to May 20 for sentencing.

Donald Held, Onsted, pleaded guilty to speeding too fast for conditions. He paid \$15 fine and costs.

Howard H. Farjett, Trenton, waived examination on a charge of sale of marijuana. He was bound over to Circuit Court.

Henry M. Jones was sentenced to six months probation.

John De Rossett, Ypsilanti, was examined on a charge of taking indecent liberties with a minor child. He was bound over to Circuit Court.

Alton Blaess, Dexter, pleaded guilty to a charge of impaired driving. He was referred to probation. Sentencing will be May 24, in Chelsea.

Robert Adamson, Pinckney, pleaded guilty to a charge of impaired driving. He was referred to the probation department and to the Highway Safety program. Sentencing is to be May 24 in Chelsea.

William R. Green, Ann Arbor, pleaded guilty to being drunk and disorderly. He was referred to probation. Sentencing is to be May 10 in Chelsea.

Steven Benko, Whitmore Lake, pleaded guilty to assault and battery. He was referred to probation. Sentencing is to be May 10 in Chelsea.

Richard Weeks, Ypsilanti, pleaded guilty to speeding. He paid \$20 fine and costs. He also pleaded guilty to driving on a suspended license, for which he was referred to probation, and paid \$50 fine and costs.

David A. Bennett, Gregory, pleaded guilty to unlawful entry. He paid \$100 fine and costs, plus \$10 restitution.

Carl Jones, Dexter, pleaded guilty to a charge of violation of probation. He paid an additional \$20 fine and costs, and his probation was reinstated.

Eddie Jezorski, Saline, pleaded guilty to having expired commercial plates. He paid \$11 fine and costs.

Hervert Azevedo, Saline, pleaded guilty to a failure to yield. He paid \$11 fine and costs.

Dan Curtis, Ann Arbor, pleaded guilty to speeding.

Michael Joseph Geer, pleaded guilty to careless driving. He paid \$35 fine and costs.

Richard Balanger, South Lyon, pleaded guilty to a charge of impaired driving. He was referred to the alcohol safety program, PSI, and probation. Sentencing will be May 21.

Richard Yost, Ypsilanti, pleaded guilty to malicious destruction of property. He was referred to probation. Sentencing will be May 24 in Chelsea.

Arthur Lee Greer, Inkster, pleaded guilty to a charge of a failure to submit pistols for inspection. He was referred to PSI, and probation. Sentencing is to be May 24 in Chelsea.

James J. Yuchasz, Detroit, was found guilty of speeding 65 mph in a 50 mph zone. Case was dismissed on payment of \$10.

Gary M. Dunny, Adrian, pleaded guilty to a charge of driving too fast for the conditions. He paid \$15 fine and costs.

Arno Martin, pleaded guilty to having no valid Michigan license. Case was dismissed with payment of \$5 costs.

To get rich, amuse the people; to stand alone, know something; to be feared, be above reproach.

Scholarship Grants Told By St. Paul's

St. Paul United Church of Christ's Scholarship Committee announced this past week grants which the committee has made to two Christian young men.

Money for the scholarships was derived from the interest earned by the investment of scholarship funds.

Grants were awarded to Dave Lemery, of Fremont, who is presently a student at United Theological Seminary of the Twin Cities, in New Brighton, Minn., and George Bakolay Abraham, from The Gambia, West Africa, a student at Olivet College.

Lemery is a graduate of Western Michigan University, after which he spent two years in the Peace Corps in Afghanistan. At the seminary he has a strong academic record, but has had to stretch out his education because of financial limitations. He serves as pastor of a small country church to help his financial situation.

Abraham entered Olivet College in September 1970. Since that time, his support from home has not been sufficient to meet the costs necessary for the second semester. Financial support was absolutely necessary in order for him to remain in this country.

Grants from which the scholarships were made available were first awarded to St. Paul church from many persons, notably the late P. G. Schaible, Sr.

According to Bruce Galbraith, chairman of the Memorial Scholarship Fund, it is hoped that these funds will continue to grow and be added to, and will eventually help a St. Paul young person, or others, entering the ministry, or other full-time Christian vocation.

Until that time, it was felt that annual grants, using the interest only of the fund, should be awarded to applicants judged most deserving.

Awards in 1970 totaled \$938.09.

SMV Signs Need Spring Clean-Up

Spring is a good time for farmers and others to check SMV (slow moving vehicle) emblems to make sure they are clean, bright and properly displayed, says a Michigan State University safety engineer.

"After washing, apply a little auto wax," suggests Richard Pfister. "This not only shines the emblem and keeps it clean longer, it also makes it easier to remove mud and dirt."

If the emblem's fluorescent orange center has faded to yellow, replace it, he adds. Replacement centers are available in some locations.

The number of rear-end collisions involving farm machinery on Michigan public roads rose from 50 in 1968 to 52 in 1969. In 1970 it leaped to 65.

"This is still far below the 90 to 95 accidents which occurred prior to use of SMV emblems, but there is need for improvement," Pfister cautions. "A little maintenance could keep you from becoming another statistic."

MSU Professor Calls TV 'Green' Medium

East Lansing—Television is a "green" medium in the hands of "green" people, according to a Michigan State University assistant professor of journalism.

Dr. Vishwa Mishra says the television industry's immaturity is leading it into a period of sensationalism and muckraking similar to the "yellow journalism" era of the print media.

Pointing to a recent survey showing that more people rely on TV than newspapers for their news, Dr. Mishra said the networks have an obligation to be factual in whatever they put on the air.

Subscribe today to The Standard!



HELPING ASSEMBLE COSTUMES for a few of the 200 cast members of the annual Fort Michilimackinac Pageant, scheduled for May 29, 30 and 31 at the restored fort in Mackinaw City, Nancy Mier, center, checks costume of her daughter Jeanne. Mrs. Mier and Jeannie Gray, left, are French women in the spectacle, and little Scott Gray enjoys dressing in an adult-style uniform. At right, Bob Liska and David Paquet are French soldiers. The annual historical drama draws thousands of people to Michigan's Straits of Mackinac area.

4-H Horse Clubs Set Annual Spring Round-Up May 16

Washtenaw county 4-H horse club will present their annual 4-H Spring Round-Up Sunday, May 16, at the Farm Council Ground on Saline-Ann Arbor Rd.

The show is open to all 4-H horse and pony project members who are presently enrolled in the 4-H program. Written proof of membership must be presented at the secretary's stand before the show.

Twenty-eight halter and performance classes for both horses and ponies are offered in the Western ring beginning at 8:30 a.m. Starting at 10 a.m., the English ring will present 16 classes, es, both halter and performance, for saddle seat and hunt seat riders. There is a \$1 entry fee for each class with six placing rosettes for the winner of each class. Winners of the Championship Fitting and Showing classes will be presented with trophies.

There is a gate donation of 50 cents per person with children under nine admitted free.



GIRL SCOUT NEWS

TROOP 58—Girl Scout Troop 58 has been busy this past week. Wednesday, April 28, the group visited the Village Pizzeria. Mr. Thompson showed them how he makes pizza, and treated the girls to a piece.

Saturday, May 1, the troop went into Detroit to the Zoo. Each girl brought a nosebag lunch, and each had a can of pop. After walking all through the zoo, they rode back to the cars on the train. Chaperones were Mrs. Cameron, Mrs. Fletcher, Mrs. Brown, and Mr. Miller.

At the troop's meeting this past week, they made invitations and favors for their Mother's Day Tea. They then went into the kitchen where each patrol made a different kind of cookies for their mothers.

(Meeting closed with Indian Taps. Linda Shaw, scribe.

GOOD NEWS

Durham, N.C.—Durham Police Capt. John Ellen described a recent visit by two attractive teenage girls as a pleasant surprise. He said they came into his office large chocolate cake and the other holding out a huge tray of cookies. The girls said they wanted the police to know that they are appreciated, and that all teenagers are not rebellious.

Funds Needed for Local Scholarships

(Continued from page one)

this amount, \$1,425 was awarded to members of the graduating class.

In 1968, a total of \$2,765 was collected from Chelsea's firms, organizations and individuals. Recipients of that year's fund were John Dickson, Gary Larson, Evelyn Estes, Raymond Warden, Ron Morley, Dan Maynard, John Lixey, Carolyn Wenk, Susan Grau, Elaine Drislie, Linda Koch, Deborah Kuhl, Alan Boyce, Karen Lehman, Diane Brand, and Donald Koenigster.

\$1,500 was awarded in 1969 to the following graduates of that class: Doug Weatheraw, Paul Prinzing, Judy Sanderson, Lynn Visel, Gary Ellenwood, and Nancy Parker.

Another successful scholarship fund campaign was concluded in 1970 with a total of \$2,768.50 collected. Recipients that year were Floyd Boyce, Barbara Bury, Vickie Clemons, Bobby Dvorak, Pat Hergert, Kathy Grob, Debbie Maynard, Don Nutt, and Rita Speas.

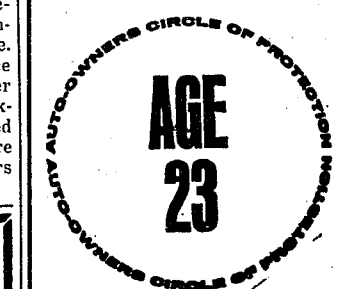
Members of the Chelsea National Honor Society assisted the Scholarship Committee for the first time in 1970. The students helped with the committee's smorgasbord dinner, and by contacting potential donors. Their pancake sale which they planned for Tag Day, as the grills which the students have used in the past were burned in the fire at Frigid Products in August, 1970, and will not be available for use this year.

Members of this year's Scholarship Committee are the Rev. Dan Kellin, Douglas Robeson, Frank Hill, Sam Vogel, Ray Canine, Mrs.

THIS IS OPERA?

The young boy went to the opera for the first time. The conductor started waving his baton, and the soprano began her aria. The boy watched everything intently and finally turned to his father. "Why is that man hitting the lady with his stick?" "He's not hitting her," his father chuckled. "Well then," asked the boy, "why is she screaming?"

Human nature is what encourages individuals to find an excuse for what they happen to desire.



Married Male Driver

Your A-O man will save you money on your car insurance. No surcharge or higher rate. See your A-O man — he's all out for you.

A. D. MAYER AGENCY, INC.

"Your Protection Is Our Business" Phone 479-5061

115 Park St. Chelsea

Auto-Owners INSURANCE COMPANY

Michigan May Events Geared To Outdoor Fun, Festivals

Lansing—May is a coming-alive time in Michigan—a time when wild mushrooms push upward through the cool soil to await an army of pickers. A time, too, when tulips bloom by the thousands in Holland and most community events are geared to the outdoors, according to the Michigan Calendar of Travel Events.

Hundreds of mushroom pickers annually descend upon the small northern Michigan communities of Boyne City and Lake City in search of these tender morsels. This year the National Mushroom Festival at Boyne City and the annual Mushroom Days in Lake City will be held May 8-9. Mushroom hunters vie for honors in various categories, including the largest mushroom found and the most mushrooms picked in a specified time period, with prizes awarded the winners.

Holland's 42nd annual Tulip Time is May 12-15 when the Netherlands of Michigan bursts forth in a myriad of colors with a profusion of tulips. A popular attraction is the Klompen Dancers, more than 600 high school girls wearing copies of authentic costumes of the various provinces of the Netherlands and wooden shoes, who give several free performances daily. Tulip Time visitors also may tour a wooden shoe factory, a typical Dutch market and explore the 12-story, 200-year-old windmill, "De Zwaan," brought over from the Netherlands and reassembled here.

Elsewhere in Michigan, canoe races will be held in Hastings, sailboat races at Tawas City and in Dearborn, there will be a Country Fair of Yesterday at Greenfield Village.

Anyone with a drop of Scottish blood will thrill to the drums and skirling pipes, the bonnie lassies dancing and the brawny lads competing during the fourth annual Highland Festival and Games in Alma on May 22.

For a free, complete list of Michigan's spring-summer events, or any Michigan vacation planning literature, write to the Michigan Tourist Council, Stevens T. Mason Building, Lansing 48926.

Two historical moments in Michigan's past will be re-enacted—the journey of Marquette and Joliet beginning at St. Ignace and the Indian attack on Fort Michilimackinac.

The re-enactment of the Marquette-Joliet journey along the shores of Lake Michigan and down the Mississippi River begins May 17, continuing through May 28, as part of St. Ignace's year-long tri-centennial celebration. The Indians' 1763 takeover of Fort Michilimackinac will be re-staged in the shadow of the Mackinac Bridge May 29-31.

Elsewhere in Michigan, canoe races will be held in Hastings, sailboat races at Tawas City and in Dearborn, there will be a Country Fair of Yesterday at Greenfield Village.

Anyone with a drop of Scottish blood will thrill to the drums and skirling pipes, the bonnie lassies dancing and the brawny lads competing during the fourth annual Highland Festival and Games in Alma on May 22.

For a free, complete list of Michigan's spring-summer events, or any Michigan vacation planning literature, write to the Michigan Tourist Council, Stevens T. Mason Building, Lansing 48926.

Fashion Notes

Plaid tweed coats are high fashion this season. They have a fitted look, lapels, and a double row of buttons in front.

SAVE \$20



Reg. \$279.95

Deluxe 5-HP, 25" Greenkeeper II

RIDING MOWER
\$259.95 Use Your Credit!
No Installment Due Until May

• 3 forward speeds • Differential
• Recoil start Briggs & Stratton engine
20", 3-HP Rotary Push Mower \$59.95
36-5473, 5502

BECKER MEMORIALS
6033 Jackson Road
ANN ARBOR, MICHIGAN



MAUSOLEUMS • MONUMENTS
BRONZE TABLETS • MARKERS

BECKER MEMORIALS
6033 Jackson Road
ANN ARBOR, MICHIGAN



INVITATIONS or ANNOUNCEMENTS...

Let us provide you with the very finest printed or engraved invitations and announcements. Make certain that your wedding stationery is of top quality and conforms to correct social requirements. We can advise you on these important details.

THE CHELSEA STANDARD
Commercial Printing Department

SPECIAL
thru Wednesday, May 12, 1971

HOT DOG
& FRIES

49¢

Home of fine Brazier foods

Dairy Queen

brazier

901 S. MAIN ST., CHELSEA PHONE 475-2677



Get Fortified Feeds... Step Up Egg Production

Prove it to yourself. Our Fortified Feeds are just the rations your hens need to produce more eggs, more profits for you.

Farmers' Supply Co.

Phone GR 5-5511



MOTHER-DAUGHTER HONOREES: Among the mothers and daughters honored at St. Mary's Mother-Daughter pot-luck dinner Monday evening were, front row, from left, Michele Mahar, daughter who traveled the farthest, held by her grandmother, Mrs. Alex Mshar, and Lara Snyder, youngest daughter present, held by her mother, Mrs. Kathy Snyder. In the back row are Mrs. Vern Buehler, left, winner of the door prize, Mrs. Harry Lyons, oldest mother present, and Mrs. Betsy Hackworth, youngest mother. Mrs. James Gaken, missing, was the mother honored for having the most daughters present.

Inverness Country Club Ladies Entertained Saturday at Luncheon

Maypoles and potted geraniums decorated the scene at the Inverness Country Club Saturday, May 1, as the ladies of the club met for their annual Spring Luncheon. Provided by the Women's Golf Committee of the club, the event featured a display of paintings done by the women of the club in their winter painting class held at the Inverness Country Club. A fashion show featured models at the clubhouse this past winter. From the Country Club, Lorna Eberts, Alice Schneider, Dorothy Miller, Linda Barstow, Joan Kruse, and Jean Mann.

VILLAGE BEAUTY SALON

LORETTA PANNONE, Owner-Operator
CINDY - EULA - JANICE - SARA

107 N. MAIN PHONE 475-5421

OPEN MONDAY THRU SATURDAY
Evenings, Wednesday and Thursday

GAMBLES

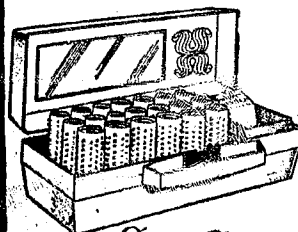
Mother's Day Specials

CLAIROL CREATES THE
CONDITIONING HAIRSETTER
KINDNESS®
CUSTOM CARE



Clairol's new Kindness Custom Care® hair conditioner is the newest instant hair-setter and conditioner. It sets, moisturizes and deep-conditions your hair beautifully all at once. Works three ways: for a conditioned set, add Clairol Kindness Custom Care Conditioner (packed with set-ter), without conditioner, it gives a great regular Kindness set; or just add water for a water-mist set. Welcome to the new world of Clairol deep-conditioned hairsetting.

\$21.95 SHOP & SAVE



DELUXE ELECTRIC HAIR CURLER KIT

For large, lovely, long-lasting curls in just minutes... set your style daily if you like! 20 wires, 8 jumbo, 8 large, 4 regular, 2 small. Compact case with mirror. Storage space for cord, 20 clips. **\$21.95**

SUNBEAM, LADY, SUNBEAM
SUNBEAM CORP., 1968

NEW mini traveler by Lady Schick



MODEL 76 **\$16.88**

A Special Gift for Mother!

Co-Op Nursery Representatives Will Attend Conference

Four Chelsea mothers will celebrate Mothers' Day this next week by attending the 20th annual May Conference of Michigan Council of Co-operative Nurseries, held May 10 and 11 in Kellogg Center, East Lansing.

Attending from Chelsea will be four mother-members of the Chelsea Co-operative Nursery on Dexter-Chelsea Rd., Mrs. David Martin, chairman-elect for the coming year, Mrs. Toby Peterson, treasurer-elect, Mrs. Dennis Mull, membership chairman-elect, and Mrs. William Robertson, publicity, will attend the two-day sessions, which will feature special workshops to help each new officer in his special duties for the coming year.

Keynote speakers will include Dr. Milton Young of the University of Connecticut in Hartford, Conn., and Dr. Vera Borasage of Michigan State University.

Dr. Young will discuss "We Want Creative Children—Myth or Reality," while Dr. Borasage's topic at the Tuesday luncheon will be "Early Childhood Education, Challenge and Commitment."

There are 1,444 families in the Huron Valley area with children in the co-operative nurseries represented by the Huron Valley Council of Co-operative Nurseries.

Rebekahs Host District Officers

Chelsea Rebekah Lodge No. 180 held their regular meeting Tuesday, May 4 with 41 guests in attendance. District Officers of Lodge No. 12 were in attendance for their official visitation. Mrs. Ida Rightmyer, president; Mrs. Francis Laimon, of Michigan Center, vice-president; Mrs. Phyllis Halgud, Brookline, secretary; and Mrs. Laurine Bailey, Jackson, treasurer; were introduced and presented with a gift, by Lodge Deputy Mrs. Mary Ann Coltre and staff.

Eleven guests from the Dexter lodge were also introduced and welcomed.

Announcements of events at the IOOF Home in Jackson included May 23 Pilgrimage, and June 27 Memorial Services.

Jeffrey Harook and Scott Beyer were selected to attend the Rebekah Camp at Big Star Lake, in Baldwin, in July.

Next visitation will be at Hanover, May 11.

Dexter extended an invitation to attend their District Officers visitation on May 17.

Mrs. Coltre read two poems in honor of "mothers" as part of the program.

Mrs. Ida Nixon, Mrs. Lina Reule, and Mrs. Harook were chairmen for the refreshments, with help from several other members.

Next regular meeting is to be May 17. Second nominations for assembly representative and alternate will be held at that time. Also, nominations will be held for lodge deputy.

ROGERS CORNERS STUDY GROUP

Rogers Corners Study Group met Tuesday, April 20, at the home of Mrs. Loren Koengster. Mrs. Luther Schaible was co-hostess for the meeting which 18 members and two guests attended.

The Michigan Extension Women's Creed was recited. Roll call was taken, on which the topic was "What you like best about living in the country."

Secretary's and treasurer's reports were read and approved.

The summer picnic was discussed and left open for further discussion at the dinner meeting in May.

Election of officers was held. Officers for the 1971-72 year are Mrs. Frank Cianciolo, chairman; Mrs. John Morris, vice-chairman; Mrs. Walter Soltysiak, secretary-treasurer; Mrs. Luther Schaible, project leader; Mrs. Walter Wolfgang, community chairman; Miss Elsie Hinderer, sunshine fund; and Mrs. Ray Manzel, recreation leader.

Business meeting was adjourned. Mrs. Earl Huehl showed slides of her family's trip to California this past winter. Refreshments were served.

Goodbye, Mealtime

Eat Lansing—Exit the latest in a long line of waning family living patterns—mealtime.

According to Dr. Dena C. Cedarquist, chairman of Michigan State University's Department of Food Science and Nutrition, the only time family-type meals are apparent anymore are on Sundays, holidays and other special occasions.

The decreasing popularity of a set family mealtime, new weekend eating habits, and communal living arrangements have all affected traditional concepts of a balanced diet, she said.

Magic Mirror Beauty Salon

Open Monday thru Friday
9 a.m. to 9 p.m.
Saturday, 8 a.m. to 3 p.m.

PHONE 665-0816

Michigan Women Invited to MSU 'Short Course'

Michigan women may spend four days as "co-eds" at Michigan State University June 15-18 during the annual College Week for Women.

"College Week is for anyone who is interested in individual enrichment, home family and consumer information, and leadership and community development," says Mrs. Wilma Miller, co-ordinator of the event for MSU's Co-operative Extension Service.

"College Week is open to any woman: You don't have to have gone to college, and we have no entrance requirements," she adds.

"Co-eds" will live in a high-rise dormitory. They attend three classes daily during the conference. They choose their class schedule from such courses as "Your Clothes — Fascination to Function," "Black Art — Music Composers and Their Music," "Learning To Use Conflict," "The Emerging Role of the Church Woman," "Increase Your Happiest Moments," and 49 others.

In addition to classes, afternoon and evening assemblies focus on the theme, "Living Creatively with Change." Mrs. Clifton Wharton, Jr., wife of MSU's president, will welcome the women, and Diane McKaig, executive director of the Michigan Consumers Council, will speak on "Consumerism and You."

Thursday evening, a multi-media presentation, "The Creative Woman," features slides, film, tape, fashion models and narration. In the presentation Richard Graham of the Department of Human Environment and Design, pay tribute to the significant roles women played in a wide variety of creative fields.

Other activities include a "swim and trim" session, a planetarium show, and a variety of tours, Mrs. Miller adds.

Commuters may register for \$7. This does not include meals. Those who wish to live in dorms get lodging, meals and registration for \$40.

Anyone who can come for only a single day is invited for Thursday, June 17. Registration is \$4, which includes lunch.

Former Chelsea Girl Has 6 Living Grandmothers

Tiffany Charmaine Partido, daughter of Mr. and Mrs. Ronald Partido, of Captain Circle, El Paso, Tex., has the unusual distinction of having six living grandmothers. Born April 8 in El Paso, she is the daughter of the former Judith Ann Brannon, a 1968 graduate of Chelsea High school.

Among her many proud grandparents are grandmothers, Mrs. Alfred Schmidt of Sycamore St., Chelsea, and Mrs. Joseph Partido, of El Paso, Tex., great-grandmothers, Mrs. Leo LaFontaine of Woodward, Okla., and Mrs. Audrey Brannon, of Chardon, O. Mrs. Elizabeth Cole of Rosemead, Calif., is Tiffany's great-great-grandmother.

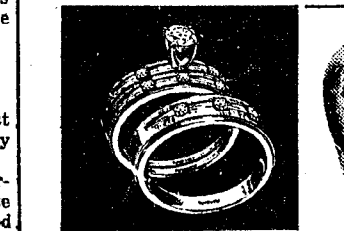
Four living grandfathers close out the immediate family circle, Joseph Partido, of El Paso, Gabriel Partido, great-grandfather, of Woodward, Okla., and Alfred Schmidt, and Leo K. LaFontaine, great-grandfather, both of Chelsea. Three of the four are retired military personnel.

Countless great- and grand-aunts and uncles complement the picture, proud grandparents report.

Tiffany's mother is a secretary for the Kessler Industries in El Paso, while her husband completes his college education. He is in his junior year at the University of Texas.

Col. Harland Sanders started his multi-million-dollar fried chicken business by investing his first social security retirement check — for \$105.

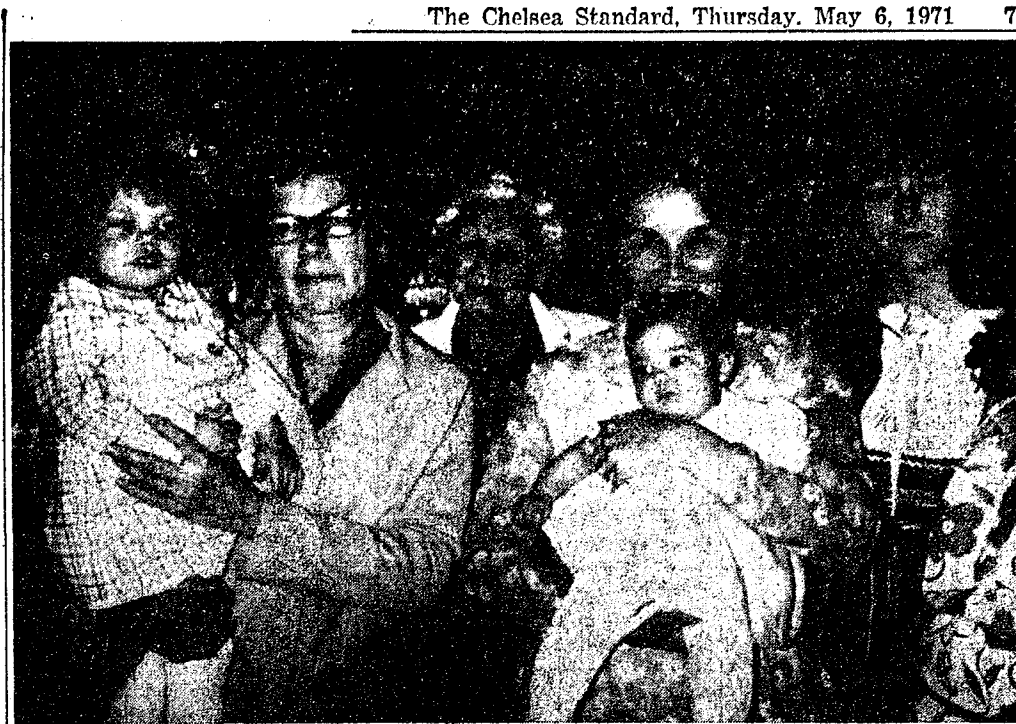
Telephone Your Club News To GR 5-3581



CHelsea \$300 ALSO FROM 200 WEDDING RINGS 103 MAN'S RING 100



VENTURA \$300 ALSO \$150 TO 1978 WEDDING RING 50



MRS. DWIGHT BARSTOW, left, chairman of the Women's Spring Luncheon for the women of the Inverness Country Club, and Mrs. Milton Rabbit, reservations chairman of the event, make a final check of the elaborate decorations for the occasion which was held May 1 at the Country Club. Behind the women is one of the paintings done by the ladies of Inverness over this past winter in the Club's painting class. The painting was done by Mrs. Ward Priest.

St. Mary Mother-Daughter Supper Held Monday Evening

St. Mary Catholic church Mother-Daughter pot-luck supper was held Monday evening, May 3 at the school hall. Among the many mothers present was Mrs. Harry Lyons, who was the oldest mother.

Mrs. Betsy Hackworth was cited as the youngest mother, and Mrs. James Gaken was the mother with the most daughters present. Lara Snyder was the youngest daughter present, and Michele Mshar from Elkhorn, Wis., was the daughter who traveled farthest.

Mrs. Vern Buehler won the door prize. All other winners were presented with red geranium plants.

Mrs. Richard Bruck acted as toastmistress for the evening, and welcomed guests at the supper.

Toast to the mothers was given by Miss Karen Sullivan, with a responding toast to the daughters presented by Mrs. Don Doll.

Two families with four generations were present. Mrs. Mary Burg, attended with her daughter, Mrs. Dudley Foster, granddaughter, Mrs. Kathy Snyder, and



ENGAGED: Mr. and Mrs. Allen R. Spees of Chelsea, announce the engagement of their daughter, Retha F., to Michael Jay Briggson, son of Mr. and Mrs. Fred O. Briggson, Dexter. The future bride is a graduate of Chelsea High school, and is employed at St. Joseph Mercy Hospital. Her fiancé is a Dexter High school graduate, and is presently serving with the United States Navy. A summer wedding is planned.

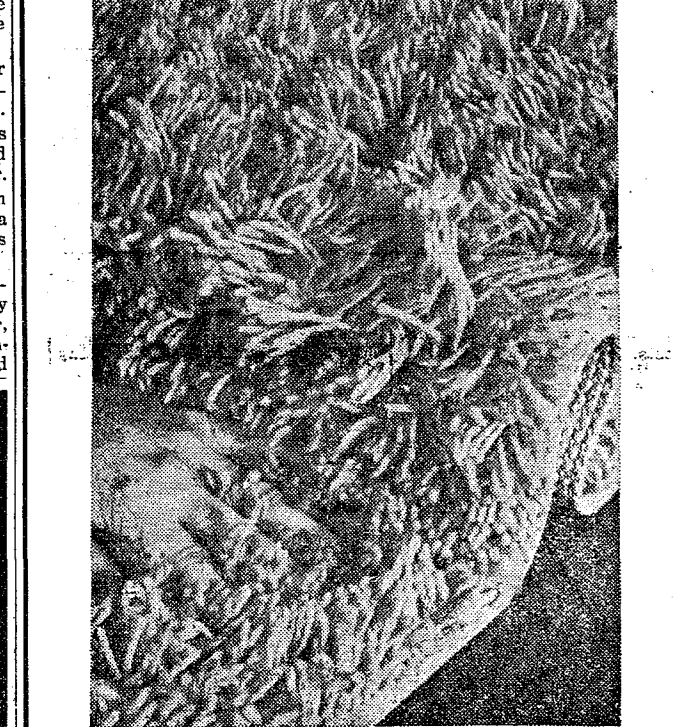
Wins \$98 Prize

Mrs. Warren Porath, Jr., 20400 Waterloo Rd., won \$98 on the Rita Bell prize movie in a drawing, Friday morning, April 30.

great-granddaughter, Lara Snyder. Mrs. Mary Kniss was accompanied by her daughter, Mrs. Mary Parsons, and granddaughter Mrs. Barbara Abdon, and great-granddaughter Laura Abdon. Ladies were entertained with songs by the Rev. Fr. Umberto from St. Louis school, and a piano solo of Beethoven's Moonlight Sonata by one of the students, Rex Lawrence.

Co-chairmen of the pot-luck supper were Mrs. Richard Bruck, Mrs. Charles Sullivan and Mrs. William Hitchingham.

(The Rev. Fr. F. Wahowiak gave the evening's address and closed the program with a prayer.)



CARPETING BARGAINS

	SALE
12' x 13'10" Gold Shag. Reg. \$182.00	\$129.95
14'11" x 15' Olive Green, nylon. Reg. \$248.75	\$124.50
12' x 10'8" Green Shag. Reg. \$138.45	\$99.00
12' x 16'1" Gold Shag. Reg. \$208.00	\$135.00
11'7" x 12" Red Shag. Reg. \$140.00	\$99.98
10'2" x 12' Red Shag. Reg. \$120.80	\$87.75
12' x 22'6" Red Shag. Reg. \$268.50	\$195.00
12' x 8'6" Gold Shag. Reg. \$107.75	\$84.95
12' x 9'3" Green Shag. Reg. \$132.65	\$79.95
12' x 7'9" Green-White Shag nylon. Reg. \$82.00	\$49.50
7'4" x 8'10" Blue Shag, nylon. Reg. \$59.50	\$29.95
8'3" x 11'1" Green nylon. Reg. \$109.45	\$54.45
12' x 10'9" Green mixed nylon. Reg. \$113.70	\$69.95
7'6" x 9'7" Green nylon. Reg. \$87.60	\$39.84
12' x 10'8" Green nylon. Reg. \$112.95	\$59.98
12' x 9' Green nylon, rubber back. Reg. \$71.40	\$34.40
10'1" x 11'10" Blue nylon. Reg. \$132.65	\$65.98
12'6" x 19'2" Light Green nylon. Reg. \$284.70	\$154.70
12' x 9' Green nylon. Reg. \$95.40	\$65.40
12' x 15'2" Red Nylon Twist. Reg. \$139.00	\$95.00
9' x 15'7" Blue heavy industrial. Reg. \$247.00	\$82.65
10 x 12' Candy Stripe. Reg. \$155.00	\$85.00
8'9" x 11'7" Green Nylon Twist. Reg. \$98.45	\$49.98

Ends of Rolls, Discontinued Patterns

	SALE
12' width, green nylon. Reg. \$6.95 yd.	\$2.99
15' width, blue nylon. Reg. \$7.95 yd.	\$4.98
12' width, yellow shag. Reg. \$6.00 yd.	\$3.98
12' width, light green acrylan. Reg. \$9.95 yd.	\$6.88
12' width, gold shag. Reg. \$6.95 yd.	\$4.49
12' width, blue-white shag. Reg. \$8.95 yd.	\$5.98
12' width, light green shag. Reg. \$6.95 yd.	\$3.98
12' width, medium green. Reg. \$8.95 yd.	\$5.98

MERKEL BROS. FURNITURE & CARPETING

Open Mon. & Fri. Till 9 Ph. Chelsea 475-8621

Community Calendar



Any boy or girl 14 years or older wishing to join M-Teens, to volunteer help at the Chelsea Medical Center, call Mrs. Betty Kock, or Mrs. Mary Turcot, 475-8761.

Stars and Masons annual Smorgasbord dinner at Dexter Masonic Temple, Sunday, May 16, from 12 until 5 p.m. adv46

Action Group Yard Sale, Saturday, May 15, 316 McKinley, Chelsea. Phone 475-8465 or 475-8012 for pick-up. xadv47

Senior Citizens monthly social meeting, Thursday, May 6, at 7:30 p.m. Leona Evans is chairman. The presentation by South school 4th graders on May 13 will not be at Korner House, but at the school gymnasium at 2:30 p.m.

Ladies Auxiliary of the VFW have been given permission to use Korner House for headquarters of Buddy Poppy sales, May 28, from 9 a.m. to 7 p.m.

Chelsea High creative arts magazine, Acolade, will be sold May 10-14 at the junior high and high schools, and in three stores in downtown Chelsea. adv46

Limaneer pot-luck, at the home of Mrs. Douglas Kennedy, Thursday, May 6. Pot-luck dinner at 12:30 p.m.

Willow Creek Ladies Tuesday Golf League, Saturday, May 8, at 2 p.m. at Willow Creek Club House, Stockbridge. Anyone interested in joining please be at the meeting. \$5 membership due on this date. League will start June 1. If unable to attend call Mrs. Prater after 4 p.m.—475-7153. adv46

Older Adult Group of the Methodist church, Saturday, May 15, 12:30 p.m. in the church social center. Bring own table service and dish to pass.

Regular meeting of Herbert J. McKune Post No. 31 at the Legion Home, May 6, at 8 p.m.

Chelsea Community Farm Bureau monthly meeting, May 13 at Sylvan Town Hall, at 8 p.m. Hosts are Mr. and Mrs. Emerson Lesser and Mr. and Mrs. Dorr Whitaker.

St. Mary Bake Sale, Saturday, May 8 at Sylvan Town Hall, from 10 a.m. to 1 p.m. adv46

St. Mary Annual Rummage Sale will be June 18 and 19. adv46

Cub Scout Pack 415 Committee meeting, Thursday, May 6, at 9 p.m., at the home of Gary Packard.

Chelsea Scholarship committee, 7:30 p.m., May 10, in the Home Ec. room at Chelsea High school.

PNG Club kook's night out May 13; meet at 6:30 p.m. at Sweden House. Those going early to visit IOOF Home. Call Mrs. Al Hinz.

VFW Auxiliary, regular business meeting, Monday, May 10, 8 p.m. at the Rebecca Hall.

South School Gala Fun Night May 6, at the High school gymnasium, 7:30 p.m. All are welcome.

Sewing every Tuesday afternoon at Korner House.

TOPS Club at library, Wednesday afternoon group, 12:30 p.m. For information call 426-4549.

Mrs. Hill Retires

(Continued from page one)

entering nurses training in the 1930's, she had her tonsils removed in the old white house on the post office site.

When asked of her plans for retirement, Mrs. Hill claims that she is undecided. She plans to do alot of fishing. First on her list of activities is to move to Dearborn, where she will be closer to friends from her nursing training days. She hopes to go back into nursing on a part-time basis in the fall, but is presently undecided about the particulars. She has a great deal of pride in the Chelsea Medical Clinic, and speaks with warmth of the doctors there, most particularly her former boss, Dr. Michael Papo.

Tuesday evening group, 8 p.m. For information call 475-8952.

Fun Night every Friday night at 7:30 p.m. at Korner House, Main St.

American Legion and Auxiliary hospital equipment available by contacting Loren Keezer at 475-2786 or 475-3431.

Inquiries regarding the Chelsea blood bank may be directed to Harold Jones in the event that Mrs. Dudley Holmes is unavailable.

Chelsea Band Boosters, Beach Junior High school, May 6, at 8 p.m. Note change of date.

Deadline for teams interested in playing Slow Pitch Baseball this summer, May 14. Deadline for Fast Pitch League, May 7. Contact Oren Wireman, 475-2924. Final meeting for league organization May 20, 7:30 p.m., Chelsea High school.

Wide Awake 4-H club picnic at Pierce Park on May 8 at 12 noon. Members bring their own hot dogs and buns. Following the picnic will be a walk to Chelsea Lanes for an afternoon of bowling.



GERALD STRAUB

Gerald Straub Seeking School Board Position

Gerald Straub has announced his candidacy for the four-year term for the Chelsea Board of Education.

Jerry resides at 6969 Madden Rd., with his wife, Carol, and their three children, Martin, Stephen, and Ellen. The two boys are students at Chelsea High and Ellen attends Beach Middle school.

Straub is president of Superior Equipment Co. of Ypsilanti and has been active in civic affairs in both Chelsea and Ypsilanti. He recently completed a term as vice-president of the Ypsilanti Chamber of Commerce, serving four years as chairman of its Education Committee, and is a past vice-president of that city's Jaycees.

He is secretary of the Agricultural Advisory Committee for the Chelsea Public Schools and is chairman of Citizens for Quality Education. These two posts have made him a frequent visitor at Board of Education meetings. Jerry has also served as co-leader of the Webster 4-H Farmers 4-H club and is a member of the Wolverine Farm Bureau group. The Straubs attend Faith Lutheran church in Dexter, where Jerry is secretary.

Professionally, Jerry is active in the Michigan Trucking Association, is vice-chairman of the Gar Wood Distributor's Council, and is a member of the Vehicular Safety Committee of the Truck Body and Equipment Association. In this position he has written several papers as the industry's response to proposed vehicular safety standards.

Survivors Listed

Omitted from the obituary which appeared in last week's edition of The Standard, of Charles Carly, were the names of two survivors, a niece, Miss Mildred K. Carly of Glendale, Ariz., and a nephew, Ken Carly, Jr., of Waterloo.

People are curious. If they were not, there would be little intelligence or progress in the world.

DEATHS

Mrs. Robert Schiller

Dies Saturday from Burns in Fire at Home

Mrs. Robert C. (Amanda R.) Schiller, 75, of 312 South St., died at University Hospital, Ann Arbor, Saturday, May 1 of burns suffered in a fire at her home on Thursday, April 29.

Mrs. Schiller was born on Nov. 1, 1895 in Freedom township, a daughter of John and Christine Schmidgall Alber. She was married to Robert C. Schiller on April 4, 1923. They had farmed in Freedom township for many years until his death on June 25, 1945. Mrs. Schiller has made her home on South St. since 1950.

She was a member of Zion Lutheran church of Rogers Corners.

Surviving are two sons, Elwyn Schiller of Jackson and Duane Schiller of Chelsea; a sister, Mrs. Paul (Margaret) Bauknecht of Saline; six grandchildren, three great-grandchildren, several nieces and nephews. A sister, Mrs. Paul (Olga) Elsemann, preceded her in death on June 26, 1969 and a brother, Paul Alber, on Oct. 2, 1907.

Funeral services were held Tuesday, May 4 at 2 p.m. at Zion Lutheran church with the Rev. John R. Morris officiating. Burial followed in Zion Cemetery. Arrangements were by the Bughardt Funeral Home. Those who wish to do so may make memorial contributions in Mrs. Schiller's memory to Zion Lutheran church Building Fund.

BIRTHS

A daughter, Kelly Ann, April 28, to Mr. and Mrs. William A. Scott.

A son, Michael Alexander, Sunday, May 2, to Mr. and Mrs. James Mshar of Elkhorn, Wis. Paternal grandparents are Mr. and Mrs. Alex Mshar, 742 Book St., Chelsea.

Area Students Cited at MSU for Academic Honors

Five Chelsea High school graduates, and one from Dexter High school were listed with the 4,866 students named to the Michigan State University honors list for winter term.

Among the students named were Alan Boyce, and Floyd Boyce, both of 14895 Island Lake Rd., Brenda Collins, 203 Madison, Douglas Schoenberg, 20330 Jerusalem, and Brenda Seitz, 111 Arden lane.

Dexter student Kathleen A. Tilt, 1031 Steinbach Rd., was also cited. Alan Boyce is an undergraduate studying agriculture, while Brenda Collins is studying elementary and special education. Brenda Seitz is studying mathematics and statistics. Floyd Boyce, Douglas Schoenberg and Kathleen Tilt have listed no preferences for a major at this time.

PROCLAMATION

WHEREAS, the National Honor Society in conjunction with the Scholarship Committee recognizes the need deserving Chelsea High seniors, and

WHEREAS, the National Honor Society in concurrence with the Scholarship Committee is aware of the rising costs of college attendance, and

WHEREAS, the National Honor Society and the Scholarship Committee wish to aid their graduating seniors in their first year of college education,

NOW, THEREFORE, BE IT RESOLVED, we declare Tag Day in Chelsea this coming Friday, May 7 and Saturday, May 8, and urge all citizens to help us in providing scholarships for our deserving seniors.

A. E. Fulks, President
Village of Chelsea

Varsity Golfers Drive into Conference Title Contention

High school golfers took over first place in the Southeastern Conference with wins over the teams from Dundee and Lincoln, May 4. Chelsea played well in the game, shooting a team score of 169 at Inverness. Dundee was second with 181, followed by Lincoln, 214.

Jim Wojcicki was medalist with 39, while Dave Powers shot 44, Glen Musolf, 45, Mark Policht and Mike Powers, 47.

The team travels to Novi today, Thursday, May 6, for a dual meet, and then on Monday, May 10, will close out the conference dual meet season at Milan against Milan and South Lyon.

Junior Varsity golfers won two more meets, defeating Novi on Thursday, April 29, 185 to 243, and Dundee on Tuesday, May 4, 213 to 237. Ken Kusterer led Chelsea scoring with a score of 46.

Most critics are more concerned with their criticism than the subject considered.

South School Assoc. Plans Ice Cream Social

South School Association met at school Thursday, April 29.

Sylvester Wojcicki, principal, presented films which are shown to the school children dealing with drug abuse.

Due to the small attendance, elections were postponed until the next meeting.

The Association will sponsor an ice cream social at the school Thursday, June 10, from 6 to 8 p.m.

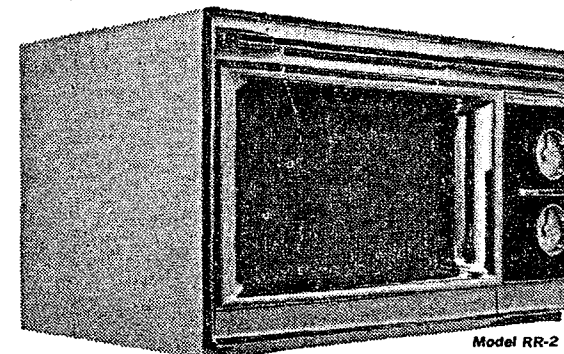
Purpose of the event is to raise money for school projects. A special feature will be singing by some of the children at the school.

Subscribe today to The Standard!

Pick the nicest gift for Mom here

Make the greatest cooking discovery since fire!

Radarange MICROWAVE OVEN MADE BY Amana.



Reduce actual cooking time by 75%

The Radarange cooks a 5 lb. roast in 35 minutes; bacon in 4 minutes; a hamburger in 60 seconds; a hot dog in 20 seconds; or a big turkey in one-fourth the normal time!

It's a miracle worker:

Cooks cool. The oven never heats up! Only the food in the Radarange heats up. You can even put your hand on the side after you take out delicious roast.

No pots and pans to clean up! You never cook in them. You use only glassware, plastic or paper products.

Browning. Yes. Roasts, turkeys, ham and other large foods brown just the way you want.

EASIER TO OPERATE than the oven you now have!

Amana's Christmas gift to you!



FREE! 24 piece set of Bormen Crystal glasses. Your initial hand-cut on each when you buy a Radarange.

1. Put the food in the oven.

2. Set timer.

3. Push start button.

and you're cooking electronically.

8-12 oz. tea glasses, 8-12 oz. water glasses, 8-10 oz. double juice. And, it's FREE when you buy this Radarange oven before December 25, 1970.

GAMBLES

GIVE MOM WEST BEND



WEST BEND'S colorful "400 Line" set has award-winning design, wonderful no-scour convenience

West Bend has the smart new look in Teflon-coated cookware — the 400 Line. It offers: • elegant new tapered styling • Fired-on hard-coat Teflon scratch-resistant finish, so you can use metal spoons, metal spatulas — and still enjoy the convenience of no-scratch, no-scoring cooking • lustrous covers in antique copper-tone • extra-thick aluminum for smooth heating • stainless steel hang-up rings. Start with this handsome set. Add to it later with your choice of matching skillets, sauce pans, casseroles, griddles.

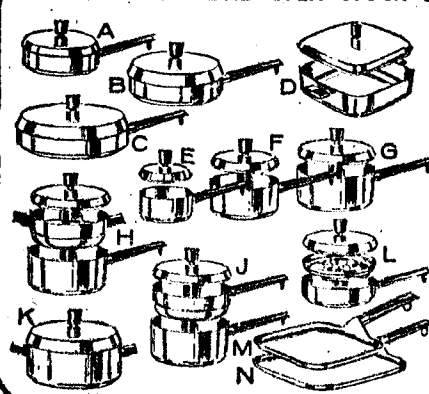
complete set \$27.95

SET INCLUDES:
1, 2 and 3 qt. SAUCE PANS with covers • 5 qt. DUTCH OVEN ROASTER • 10 inch SKILLET • 10" COVER fits SKILLET and Dutch Oven • RECIPE BOOKLET



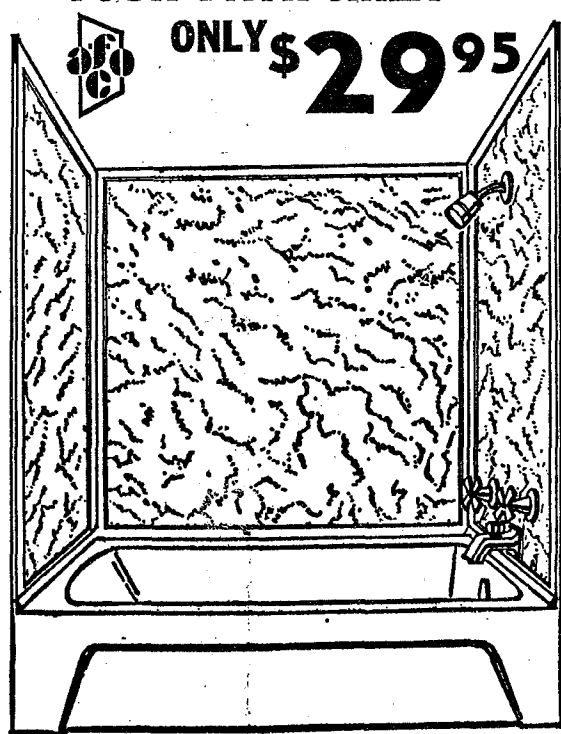
...where Craftsmen still care.

MATCHING 400 LINE OPEN STOCK . . . WITH HARD-COAT TEFLON FINISH



- A. 8" SKILLET with cover \$ 3.99
- B. 10" SKILLET with cover 7.95
- C. 12" SKILLET with cover 9.50
- D. 3 1/2 qt. SQUARE CASSEROLE 8.95
- E. 1 qt. SAUCE PAN with cover 4.75
- F. 2 qt. SAUCE PAN with cover 5.75
- G. 3 qt. SAUCE PAN with cover 6.75
- H. 3 qt. CASSEROLE (2 qt. inset) 10.95
- J. 3 qt. DOUBLE BOILER (2 qt. inset) .. 10.95
- K. 5 qt. DUTCH OVEN with cover 8.50
- L. 4-cup EGG POACHER 8.25
- M. 8" SQUARE GRIDDLE 3.75
- N. 11" SQUARE GRIDDLE \$5.95

BEAUTIFY AND MODERNIZE YOUR BATH AREA



A COMPLETE PACKAGE OF CUT-TO-FIT MELAMINE FINISHED PANELS AND MOULDINGS
DESIGNED WITH THE BEAUTY OF YOUR BATH AND THE VALUE OF YOUR HOME IN MIND
INSTALL IT YOURSELF

Stocked in White or Italian Marble

CHELSEA LUMBER CO.

DIAL GR 5-3391

HEYDLAUFF'S

(Formerly Frigid Products)

113 North Main St.

Phone GR 9-6651

The Supermarket That's Just a Little Bit Better

Stop & Shop

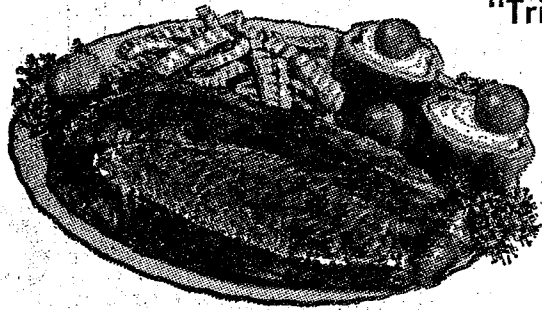
14901 Old U.S.-12
Corner at M-52
Chelsea



Prices effective Wednesday, May 5, 1971
through Tuesday, May 11, 1971.

"Trimmed-Rite" Tender, Juicy, U.S.D.A. Choice
BONELESS

ROUND STEAK 99¢ lb.



Tender, Delicious

Cube Steaks . . . \$1²⁹ lb.

Boneless, Pre-Diced

Beef Stew . . . 99¢ lb.

100% Pure Beef Fresh Ground Daily

Hamburger . . . 59¢ lb.
5-Lb. Units or More
Ground fresh many times daily!

Circle "A" Brand Thick Sliced

Bacon . . . 2 lb. pkg 99¢

"Trimmed-Rite" Tender, Lean, Meaty, Fresh

Pork Steaks . . . 59¢ lb.
Cut from young corn-fed porkers!

Center Cut

Chuck Roast . . . 69¢ lb.

Round Bone Cut

Chuck Roast . . . 89¢ lb.

Boneless

Chuck Roast . . . 99¢ lb.

Fresh Boston Butt

Pork Roast . . . 49¢ lb.

Boned, Rolled and Tied

Boneless Boston Butt . . . 69¢ lb.

With MINI-PRICING you still buy Quality - PLUS you get our Double
your Money Back Guarantee if not completely satisfied.

CAMELOT SKINLESS

FRANKS . . . 2 Lb. Pkg. 99¢

Giant Size
TIDE SOAP

49-Oz. Pkg. **69¢**

Log Cabin

SYRUP

1 Qt., 4 Oz. Can **79¢**

Viva

PAPER TOWELS

2-Roll Pkg. **33¢**

Holsum, Enriched
Hamburger or Hot Dog

SOF-BUNS

8-Count Pkg. **2 pkgs. 49¢**

MCDONALD'S PREMIUM

ICE CREAM

French Vanilla - Black Cherry
Butter Pecan
Toasted Almond Fudge

1/2 gal. 79¢

Carnival
ORANGE JUICE

15¢

Reynolds

ALUMINUM FOIL

12 Ft. x 25 Ft. Roll **22¢**

Camelot Saltine

CRACKERS

1-Lb. Box **19¢**

Nestle's

Chocolate Quik

2-Lb. Can **69¢**

One-Way Bottles

COCA-COLA

10-Oz. Bottles **8 pac. 79¢**

Planter's Creamy

PEANUT BUTTER

1-Lb., 12-Oz. Jar **69¢**

Old Salem

BRIQUETS

20-Lb. Bag **99¢**

Farm Fresh Produce

Fresh California

ASPARAGUS . . . Lb. **39¢**

Fresh Red

RADISHES . . . Cello Pkg. **9¢**

California

CHERRY TOMATOES . . . Pint **39¢**

Florida

Pascal Celery . . . Stalk **19¢**

WE
RESERVE
THE
RIGHT
TO
LIMIT
QUANTITIES

For Your
Convenience
**OPEN
SUNDAY
10 a.m. - 4 p.m.**
All Sale Prices
Effective
Sundays

Sorry,
No Sales
To Dealers

STORE HOURS:
Monday, Tuesday,
Wednesday
9 a.m. - 6 p.m.
Thursday, Friday
9 a.m. - 9 p.m.
SATURDAY
9 a.m. to 6 p.m.
SUNDAY
10 a.m. to 4 p.m.

Second
Section

The Chelsea Standard

Pages 9-14

CHELSEA, MICHIGAN, THURSDAY, MAY 6, 1971



CHELSEA JV BASEBALL TEAM is well into their season, although they did not play their first game until April 22. Bullpup ball players are, front row, from left, Keith Hume, Steve Keiser, Dan Bertke, John Mann, Jeff Daniels, Doug Hillman, Steve Siebert, Don Schaeffer. In the second

row are Mike Nadeau, John Houle, Dennis Kipfmiller, Howard Haselschwardt, Rick Miller, Craig Johnson, Ken Keiser, and Steve Schanz. In the third row are Mark Watton, Jeff Sprague, Dave Lauhon, Larry Garlick, Ron Clark, Bill Kalmbach, and Don Morrison, and Don Nadeau, managers.

School Board Briefs

At the Board of Education meeting held Monday, May 4, in the Board of Education rooms at the high school, present were President Irwin, members Smith, Haselschwardt, Koenn, Hopkins, Storey and Powers, Superintendent Cameron, Business Manager Mills, Principals Lane, Conklin, and Benedict.

Guests included Robert Schaefer, Sr., Jerry Straub, Edward Lauhon, and Robert Daniels.

Meeting was called to order at 8:10 p.m. by President Irwin.

Motion by Hopkins, supported by Powers, to accept the minutes of the April 19 meeting to read as corrected. All ayes.

Motion by Powers, supported by Koenn, to go into executive session at 8:25 p.m. All ayes.

Meeting called back to order at 9:30 p.m.

Motion by Powers, supported by Haselschwardt, to ratify the amendments to the Master Contract for the Chelsea Education Association to become effective

Aug. 31, 1971, and terminate Aug. 31, 1972. All ayes.

Motion by Hopkins, supported by Smith, to pay general fund bills of \$60,079.61 all ayes.

Motion by Koenn, supported by Storey, to adopt the resolution relative to the agreement between the Village Council and the Board of Education regarding a Recreation Council. All ayes.

Policy review committee will meet May 10.

Transportation committee will meet May 19.

Trustee Storey reported on a Curriculum Committee evaluation of the high school English program. Motion by Hopkins, supported by Powers, to continue the high school English curriculum for 1971-72 with an evaluation at the end of the first semester, and an evaluation in April 1972. All ayes.

Motion by Powers supported by Koenn, to accept the resignation of Mrs. Wanda Edmonds, effective June 11, 1971. All ayes.

Motion by Hopkins, supported by Smith, to accept the resignation of Mrs. Isabelle Eisele, effective June 11, 1971. All ayes.

Motion by Koenn, supported by Storey, to accept the resignation of Mrs. Jennie Morgan, effective June 11, 1971. All ayes.

Motion by Powers, supported by Hopkins, to place Dennis Raymond on a third year probation for 1971-72. All ayes.

Motion by Powers, supported by Koenn, to accept the resignation of Dennis Raymond, effective June 11, 1971.

Motion by Hopkins, supported by Koenn, to commend the Senior Trip Club and the French Club students who traveled to Paris, on the department of the students, and the success of their trips, as reported by the Travel Agency, and chaperones. All ayes.

Meeting adjourned at 11 p.m.

Because of a U.S. Federal Trade Commission ruling, light bulb manufacturers now have to place added information on incandescent light bulb labels. Average output and life of the bulb must be clearly stated and conspicuously on the bulb package.

Sweet as the Thought...
Flowers
FOR MOTHER'S DAY



**KIWANIS
CLUB
FLOWER
SALE**

All profits go
for community
service projects.

FRIDAY and SATURDAY MAY 7 and 8

Friday, 8 a.m. to 9 p.m. - Saturday, 8 a.m. to 6 p.m.

- at -

HEYDLAUFF'S STORE, 113 N. Main St.

'Remember Her With Flowers'



BOWLING NEWS

Guys & Gals Mixed League

Standings as of April 29

Pub No.	W	L
Wolverine Bar	99	29
Pub No. 2	86	42
Pleasant Lake Resort	72 1/2	55 1/2
Team No. 4	63 1/2	64 1/2
Chelsea Lanes	62 1/2	65 1/2
Steele Heating	61	67
Ted's Standard Serb.	59 1/2	68 1/2
Four D's	55 1/2	72 1/2
Norris Electric	51	77
Grass Lake	46 1/2	81 1/2
Sandbaggers	40	88

Team high game: Pub No. 1, 705.

Team high series: Pub No. 1, 2,035.

Women's high game: N. Collins, 215.

Women's high series: N. Collins, 570.

(Women's 150 or over games: P. Elliott, 186; P. Huston, 158; N. Packard, 161; N. Collins, 152, 193, 215; D. Cozzens, 185, 178; C. Timmerman, 184; J. Baku, 154, 159; B. Fritz, 186, 153; D. Eder, 191.

(Women's 450 or over series: B. Fritz, 476; D. Eder, 470; D. Cozzens, 470; N. Collins, 570; P. Elliott, 454.

Men's high game: J. Eder, 209.

Men's high series: D. Eder, 554.

Men's 175 or over games: D. Eder, 190, 188, 176; J. Risner, 189; T. Steele, 164; A. Sannes, 193; E. Baku, 207; O. Timmerman, 176; R. Schmude, 196; J. Eder, 209; J. Collins, 181, 180; J. Elliott, 178, 190.

Men's 500 or over series: J. Eder, 524; J. Collins, 554; J. Elliott, 532; E. Baku, 537; T. Steele, 533; A. Sannes, 516; D. Eder, 554.

Charlie Brown's Peanut League

Final Standings

	W	L
Crazy Chryslers	66 1/2	29 1/2
Eagles	59 1/2	35 1/2
Wipe Outs	53 1/2	42 1/2
Shopy Stars	45	51
Road Runners	41	55
Banana Splits	22 1/2	77 1/2

Games over 70: L. Lovely, 88; D. Wilson, 81, 86; J. Verwey, 84; D. Stork, 95, 92; D. Boyer, 74; D. Waldyke, 70, 78; M. Waldyke, 82, 106; C. Lord, 93, 81; K. Steinaway, 90, 74; E. Case, 100; C. Kalishchek, 89, 88; M. Foster, 82, 80; S. Wilson, 97; G. Packard, 76, 93; D. Aliber, 97, 82; R. Ostrander, 87, 98; G. Umstead, 76; D. Bowen, 114, 190; J. Boyer, 76, 94.

Series over 140: G. Packard, 169; D. Aliber, 179; R. Ostrander, 175; D. Bowen, 244; J. Boyer, 170; D. Boyer, 140; D. Waldyke, 148; M. Waldyke, 188; C. Lord, 174; K. Steinaway, 164; E. Case, 152; C. Kalishchek, 177; M. Foster, 162; S. Wilson, 156; D. Wilson, 167; J. Verwey, 151; D. Stork, 187.

Telephone Your Club News To GR 5-5581

MID-STATE FINANCE CORP.

\$25 to \$1,000

For Any Worthwhile Purpose

See or Call

FRANK HILL

at 475-8631

111 PARK STREET

CHELSEA, MICH.

Chelsea Nite Owl League

Final Standings

	W	L
Foster's Men's Wear	92	44
Steele's Heating	87 1/2	48 1/2
Heller Electric	81	55
Cavanaugh Lake Store	72	64
Smith's AAA	70	66
Mid-State Finance	65	71
Waterloo	64	72
Pump & Pantry	63 1/2	72 1/2
Jack & Son Barbers	59	77
Wahl's Arco Sparks	57	79
McCalla Mobile Feeds	56	80
The Profs	49	87

500 series: J. Eder, 575; H. Pennington, 554; J. Waldyke, 551; A. Peterson, 569; J. Stoffer, 546; P. Smith, 541; E. Baku, 560; M. Packard, 532; L. Heller, 525; R. Tanner, 514; D. Beeman, 510; T. Steele, 510; K. Hartka, 506; G. Miller, 502.

200 games: A. Peterson, 214; J. Eder, 208; L. Heller, 202; J. Waldyke, 201; D. Warren, 200.

Charlie Brown & Snoopy's Friends Prep Division

Final Standings, May 1

	W	L
The Bully Brothers	77	22
The Pin Fighters	74 1/2	24 1/2
Good Guys	63	36
The Pink Panthers	56 1/2	39 1/2
Tremendous Strikers	51	48
Strikers	50 1/2	48 1/2
The Partridge Family	46	53
Computers	40 1/2	59 1/2
Red Barons	34 1/2	64 1/2
Creamators	34	65
The Brains	34	65
Groovy Fruitee Tooties	32 1/2	66 1/2

Games 100 or over: P. Greenleaf, 125; K. Romine, 116, 135; D. Alexander, 102, 123; D. Craft, 117, 105; K. Mshar, 121; D. Eisele, 123; S. Smyth, 106; A. Kalishchek, 112, 115; K. Hepburn, 111; R. Weiner, 105, 115; T. Marsh, 103, 106; L. Hafner, 107; B. Bennett, 118; T. Roberts, 123, 111; J. Alexander, 123; B. Rosentretter, 123, 154; J. Spaulding, 106; D. Craft, 170, 200; J. Sweet, 127, 104; S. Lyerla, 141, 116; D. Morrison, 107, 106; L. Alexander, 124, 124; D. Aliber, 139, 186; M. Fahrner, 123, 102; S. Schulze, 112, 100; M. Foster, 103, 124; S. Bowen, 116; J. Boyer, 113; J. Collins, 125, 120; M. Burnett, 117, 104; M. Bowen, 105; B. Lewis, 126, 139; C. Sannes, 109, 123, 102; D. Thompson, 123, 102; J. French, 131; A. Houle, 130, 126; B. Lovely, 104, 117.

Series of 200 or over: P. Greenleaf, 212; K. Romine, 251; D. Alexander, 225; D. Craft, 222; K. Mshar, 201; D. Eisele, 214; A. Kalishchek, 227; T. Marsh, 209; R. Weiner, 220; B. Bennett, 204; T. Roberts, 234; J. Alexander, 218; B. Rosentretter, 277; D. Craft, 370; J. Sweet, 231; S. Lyerla, 287; J. Elliott, 228; D. Aliber, 325; M. Fahrner, 225; S. Schnlze, 212; M. Foster, 227; S. Bowen, 202; J. Collins, 245; M. Burnett, 221; B. Lewis, 265; C. Sannes, 204; D. Thompson, 230; J. French, 131, A. Houle, 250; B. Lovely, 221.

Inverness Golf League

	Pts.
Chelsea Lumber	8 1/2
Inverness Inn	8 1/2
The Keglers	8 1/2
L.P.S.	8 1/2
Lardas & Ahlstrom	8 1/2
A. D. Mayer Ins.	8
J & S Tool Co.	8
The Pub	8
Chelsea Milling	8
Fitzsimmons Exc.	8
Chelsea Lanes	8
Schumm's	2
Central Fibre	2
Seitz's Tavern	1 1/2
Dana Corp.	1 1/2
Dancer's	1 1/2
G. A. Sales	1 1/2
Meabon's	1

Old Timers Bowling League

Final Standings, April 30

	W	L
Sportsman's Bar	86 1/2	53 1/2
Sanford Security Serv.	85	55
Nelson Realtors	79 1/2	60 1/2
Bob & Otto Standard	78 1/2	61 1/2
Has Beens	78 1/2	61 1/2
Team No. 16	76 1/2	63 1/2
Colonial Lanes	75 1/2	64 1/2
Cloverleaf Lanes	75 1/2	64 1/2
Hotzel Service	74 1/2	65 1/2
Mather Co.	68	72
Dexter Bowl 'n' Bar	67	73
Merkel Furniture	69	81
Stein & Goetz	58 1/2	81 1/2
Hartman Ins.	58	82
Team No. 14	57 1/2	82 1/2
Lucky 13	50	90

High team game and series: Bob & Otto Standard, 916 and 2,668.

High ind. game: Lloyd Hall, 237.

Other 200 games, 500 series and over: Paul Johnson, 204, 226; George Haines, 235; Henry Vick, 235; H. Hunter, 214; E. Armbruster, 212; G. Rohde, 210; C. Walter, 208; J. Zucco, 204; D. Morton, 203; W. Tyrakowski, 202; P. Grabowski, 201; L. Hall, 602; P. Johnson, 589; W. Tyrakowski, 558; A. Frank, 520, 534; W. Wysocki, 200, 523; G. Haines, 561; D. Morton, 541; J. Zucco, 523; H. Hunter, 521; E. Armbruster, 533; E. Yek, 510; P. Nass, 509; G. Austin, 530; F. Menerey, 513; G. Rohde, 512; D. Peden, 503; C. Walter, 502; A. Kaiser, 502.

Chelsea Lanes Mixed

Standings as of April 30

	W	L
H & H	138	86
Chelsea Lanes	134	90
Fitzsimmons Exc.	126	98
Gephart & Barkley	120	104
Turner & Johnson	118	106
Singhinger & Pierce	112	112
Ann Arbor Centerless	112	112
Rabbis & Priests	111	113
Wolverine No.	103	121
Devine & Coppernoll	101	123
Haim & Arrington	97	127
Bollinger's Sanitation	76	148

Women's 150 and over: F. Gephart, 225, 197; L. Alexander, 167, 193, 168; J. Hutzel, 187, 153; L. Gilmore, 180, 161; H. Morgan, 173, 179; R. Johnson, 164, 175; D. Keizer, 166; E. Harmon, 165; D. Pierce, 164; J. Barkley, 162; K. Arrington, 161; D. McMullen, 164; J. Rabbitt, 152, 161, 153.

Women's 450 and over: F. Gephart, 569; L. Alexander, 518; H. Morgan, 476; J. Hutzel, 475; R. Johnson, 461; J. Rabbitt, 456; L. Gilmore, 450.

Men's 175 and over: D. Coppernoll, 255, 194, 192; G. Heim, 230; M. Poertner, 202, 210, 210; M. Packard, 202, 181; B. Robertson, 198, 176; O. Johnson, 198; G. Arrington, 192; R. Gilmore, 187; J. Turner, 181, 183.

Men's 475 and over: D. Coppernoll, 641; M. Poertner, 622; M. Packard, 552; G. Heim, 622; J. Turner, 538; O. Johnson, 622; G. Arrington, 510; R. Gilmore, 509; B. Robertson, 507; B. Devine, 491; R. Morgan, 478.

Junior House League

Standings as of April 29

	W	L
Chelsea Drug	152	72
J & S Tool	147	77
Smith's AAAA Service	130	94
The Pub	129	95
Boyer Automotive	116	108
Inverness Inn	114	110
3-D Sales & Service	106	118
Gambles	103	121
Jiffy Mix	99	125
Palmer T-Birds	89	135
Wolverine No. 2	89	135
Wolverine No. 1	71	153

Over 200 games: R. Kyte, 202; A. Fleischmann, 201; G. Weir, 209; W. Brown, 211; A. Fletcher, 232; W. Beeman, 205.

Over 500 series: A. Fletcher, 612.

Over 500 series: R. Kyte, 517; S. Johnson, 521; R. Fike, 506; A. Sannes, 514; R. Nix, 567; G. Devoe, 542; R. V. Worden, 590; D. Scott, 507; D. Eder, 545; A. Fleischmann, 654; P. Boham, 609; W. Brown, 531; J. Harook, 641; G. Weir, 563; L. Fahrner, 522; J. Hughes, 518; L. Hughes, 506; E. Baku, 663; R. Semark, 628; D. Murphy, 566; M. Sweet, 648; W. Beeman, 565; T. Dittmar, 610; R. Schenk, 560; C. Koenigster, 574.

YES

WE ARE MAKING LONG TERM FARM REAL ESTATE LOANS

SEE US



P. O. Box 1006
Ph. 769-2411 8645 Jackson Rd.
Ann Arbor, Mich. 48103

SPORTS CORNER

OAKLAND'S HOPES TO LIVE UP TO THE PROMISES THAT FAILED LAST SEASON ARE BANKING ON A COMEBACK BY REGGIE JACKSON TO LEAD THE WAY.

IT DEPENDS ON REGGIE.

JACKSON SLUMMED TO 23 HOME RUNS IN 1970 AFTER SMASHING 47 IN 1969. ONLY 25 YEARS OLD, HE IS THE KEY TO THE A'S CHANCES FOR A PENNANT IN 1971.

CHS JV Baseball

May 6—Dundee	A
May 11—Novi	H
May 13—Milan	H
May 18—Lincoln	A
May 20—South Lyon	A
May 25—Saline	A
May 27—Dexter	H

1971 Bulldog Varsity Track Schedule

May 6—Saline	H
May 8—Cardinal Relays	Michigan Center
May 11—Dexter	H
May 15—Regional	Mich. Center
May 20—Conference	South Lyon
May 22—State	Michigan Center
May 24—Jackson Honor Roll	Meet

CHS Golf Schedule

May 6—Novi	A
May 10—Milan-S. Lyon	A
May 14—Regional meet.	
May 17—League meet.	

Bulldog Varsity Baseball Schedule

May 6—Dundee	Home
May 11—Novi	Away
May 12—Stockbridge	Away
May 13—Milan	Away
May 18—Lincoln	Home
May 19—Novi	Home
May 20—South Lyon	Away
May 25—Saline	Home
May 27—Dexter	Away

New Michigan Fishing Book Now Available

Lansing—One of the most complete books ever published on Michigan fishing is now ready for distribution, according to William T. McGraw, director, Michigan Tourist Council.

A year in preparation, the new 36-page publication, "Fishing in Michigan," was produced by the Michigan Tourist Council in cooperation with the Fisheries Division, Department of Natural Resources.

"Fishing has become an increasingly important factor in bringing more out of state visitors to Michigan as well as encouraging state residents to spend more leisure time in recreational travel," McGraw said.

"As an example," he pointed out, "a recent report to the Department of Natural Resources indicated that Coho fishing alone prompted more than \$8 million spending on that sport in 1970."

Illustrated with full color photos, the book describes the how, when and where of Michigan fishing. Eleven pages are devoted to descriptions of Michigan's 20 game fish, including physical characteristics, habits and habitats. How to catch 'em instructions are provided with each individual fish description, along with tips on cooking.

For those who have never before tried their luck on this age-old sport, instructions on bait and tackle and how best to use them is included.

On safety's side, one page of the book contains Great Lakes safe-boating information as well as illustrations showing official U. S. Coast Guard traffic signals and warning flags.

From stream and inland lake fishing, angling through the ice to dipping for spring smelt, Michigan's fishing scene is completely covered, according to McGraw.

Copies of the publication, "Fishing in Michigan," are available without charge from the Michigan Tourist Council, Lansing 48926.



DEN 5, PACK 415—

Den 5, Pack 415 met Tuesday, May 4, at the home of Mrs. Richard Seyfried. The boys opened the meeting with a song. They wrapped their Mother's Day present, and made a card for her.

The boys held elections, with Kenny Aldrich elected as new denner, Chris Alber as assistant denner, and Brian Hughes as scribe.

The boys played the game "Two Baskets," and closed the meeting with the Den Yell. They said "farewell" to Randy Ellis. Treats were furnished by Kelly Krieger.

Brian Hughes, scribe.

DEN 3, PACK 445—

Den 3, Pack 445. The boys met at the home of den mother, Mrs. Otto, Wednesday, April 28. They finished their kites for the kite derby, which was held last Saturday.

They played a game of marbles. Treats were furnished by Strat Rademacher.

Strat Rademacher, scribe.

DEN 1, PACK 415—

Cub Scouts of Den 1, Pack 415 met May 4 at the home of the den mother, Mrs. Alice Atkinson. The boys finished their Mothers' Day gift, which was a kitchen cutting board. They wrote a verse and a recipe to accompany the gift.

your week ahead

BY DR. A.W. DAMIS

Astrological Forecast Period — May 9-16 inclusive

ARIES Mar. 21 - Apr. 19 Your attitude toward an associate will change. So? A feud, subtle and pointless, will end.

TAURUS Apr. 20 - May 20 It's not what, rather, how you say it... that will spread jealousy among your associates.

GEMINI May 21 - June 20 You're entering a phase of casting too many irons on the fire. Consolidate your plans.

MOONCHILD June 21 - July 22 Again, conflicting moods criss-cross your chart. Don't provoke reprisals from the opposite sex.

LEO July 23 - Aug. 22 Take no liberty with facts. Keep accurate data nearby. Your veracity will be challenged, suddenly.

VIRGO Aug. 23 - Sept. 22 Warm and pleasing responses from people you least expect show in your planetary aspects.

LIBRA Sept. 23 - Oct. 22 Impulsive actions by mail or phone, linked with a clandestine situation, must be avoided.

SCORPIO Oct. 23 - Nov. 21 Your response to the needs of others is sharply honed. You'll attract the opposite sex.

SAGITTARIUS Nov. 22 - Dec. 21 A rebellious attitude will put you at odds with someone in authority. Play down ultimatums.

CAPRICORN Dec. 22 - Jan. 19 See to it that you recruit allies. You need help to

+ Services in Our Churches +

FIRST UNITED METHODIST CHURCH
The Rev. Olive Dickins, Pastor
Thursday, May 6—
7:30 p.m.—Vacation church school workers planning meeting.
Saturday, May 8—
8:00 a.m. to 6:00 p.m.—Junior High MYF car wash at Pump & Pantry.
Sunday, May 9—
9:00 a.m.—Church school (Nursery - Adult).
10:00 a.m.—Church school (Nursery - 2nd grade).
10:00 a.m.—Worship service.
Concert by Ashbury College Singing Ambassadors.
5:30 p.m. to 6:30 p.m.—Junior MYF "Mothers Day Tea" in Narthex.
Monday, May 10—
8:00 p.m.—Council on Ministries meeting.

ZION LUTHERAN CHURCH
Corner of Fletcher, Waters Rds.
(Rogers Corners)
The Rev. John R. Morris, Pastor
Thursday, May 6—
7:30 p.m.—Men's work night.
Michigan District Convention at WMU through May 8.
Friday, May 7—
1:00 p.m.—May Fellowship Day at St. John UCC.
6:30 p.m.—Mother-Daughter banquet.
Saturday, May 8—
9:00 a.m. to 12:00 p.m.—Youth Instruction Classes.
Sunday, May 9—
10:35 a.m.—Worship service.
9:00 a.m.—Sunday school.
Monday, May 10—
7:15 p.m.—Junior Choir.
8:00 p.m.—Senior Choir.
Wednesday, May 12—
8:00 p.m.—Church Council.

OUR SAVIOR LUTHERAN CHURCH
Rebekah Hall, 1194 M-52
The Rev. William H. Keller, Pastor
Sunday, May 9—
9:15 a.m.—Sunday school and Youth Bible Class.
10:30 a.m.—Worship Service.
Every Thursday—
6:30 p.m.—Youth Confirmation Class.

CHURCH OF CHRIST
13661 Old US-12, East
R. D. Parnell, Minister
Sunday, May 9—
10:00 a.m.—Church school.
11:00 a.m.—Worship service.
6:00 p.m.—Worship service.
Every Wednesday—
7:30 p.m.—Bible Study.

FIRST UNITED METHODIST CHURCH OF WATERLOO
Parks and Territorial Rds.
Mrs. Altha Barnes, Pastor
Sunday, May 9—
9:15 a.m.—Morning worship.
10:15 a.m.—Sunday school.

ST. JOHN'S EVANGELICAL AND REFORMED CHURCH
(United Church of Christ)
Francisco
The Rev. Robert Townley
Sunday, May 9—
10:00 a.m.—Worship service.
10:20 a.m.—Sunday school.

BETHEL EVANGELICAL AND REFORMED CHURCH
(United Church of Christ)
Freedom Township
The Rev. Roman A. Reineck
Sunday, May 9—
10:00 a.m.—Worship.
10:00 a.m.—Sunday school.

GREGORY BAPTIST CHURCH
The Rev. Grant Lapham, Pastor
Sunday, May 9—
10:00 a.m.—Worship service.
11:15 a.m.—Church school.
6:30 p.m.—Baptist Youth Fellowship.
7:30 p.m.—Evening worship service.

ST. PAUL UNITED CHURCH OF CHRIST
The Rev. Warner Siebert, Pastor
Friday, May 7—
1:00 p.m.—May Fellowship Day, at St. John's UCC at Roger Corners.
6:30 p.m.—Mother-Daughter pot-luck.
Saturday, May 8—
9:00 a.m. to 12:30 p.m.—Junior High confirmation program.
10:15 a.m.—Youth Choir.
Sunday, May 9—
9:15 a.m.—Church school.
10:30 a.m.—Worship service.
Sermon title: "Free Love."
Monday, May 10—
7:30 p.m.—Vacation church school teachers.
Tuesday, May 11—
6:45 p.m.—"Superstar."
Wednesday, May 12—
7:00 p.m.—Spiritual Life department.
7:15 p.m.—High school choir.
8:15 p.m.—Chancel choir.
Thursday, May 13—
9:00 a.m.—Koinonia Study Group.
3:30 p.m.—Ann Arbor Jackson Association Executive Board.

FIRST ASSEMBLY OF GOD CHURCH
The Rev. Thode B. Thodeson, Pastor
Sunday, May 9—
9:45 a.m.—Sunday school.
11:00 a.m.—Worship service.
7:00 p.m.—Evangelistic service.
Every Wednesday—
7:00 p.m.—Midweek services.

VILLAGE UNITED METHODIST CHURCH OF WATERLOO
8117 Washington St.
Mrs. Altha Barnes, pastor
Sunday, May 9—
10:00 a.m.—Sunday school.
11:15 a.m.—Morning worship.

METHODIST HOME CHAPEL
The Rev. R. L. Clemans, Chaplain
Sunday, May 9—
8:45 a.m.—Worship service.

ST. JOHN'S EVANGELICAL AND REFORMED CHURCH
(United Church of Christ)
Rogers Corners
The Rev. David J. Kleis
Sunday, May 9—
9:30 a.m.—Sunday school.
10:30 a.m.—Morning worship.

FIRST UNITED PRESBYTERIAN CHURCH
Unadilla
The Rev. T. H. Liang
Sunday, May 9—
9:45 a.m.—Sunday school.
11:00 a.m.—Worship service.
Every Tuesday—
8:00 p.m.—Choir practice.

NORTH SHARON COMMUNITY BIBLE CHURCH
Sylvan and Washburn Rds.
The Rev. William Enslin, Pastor
Sunday, May 9—
10:00 a.m.—Sunday school.
11:00 a.m.—Worship service.
6:30 p.m.—Young People's service.
Every Wednesday—
7:30 p.m.—Prayer meeting.

CHELSEA MEDICAL CENTER
Wednesday, May 12—
1:30 p.m.—Worship service.

CHELSEA BAPTIST CHURCH
837 Wilkinson
The Rev. James Stacey, Pastor
Sunday, May 9—
10:00 a.m.—Sunday school.
11:00 a.m.—Worship service.
Nursery care available during all services.
6:00 p.m.—Junior and Senior Baptist Youth Fellowship.
7:00 p.m.—Evening worship.
Every Wednesday—
7:30 p.m.—Bible study and prayer meeting.

ST. BARNABAS EPISCOPAL CHURCH
20500 Old US-12
The Rev. C. Walton Fitch, Vicar
Telephone 426-8815
Sunday, May 9—
9:15 a.m.—Holy Communion, first, third, and fifth Sundays.
9:15 a.m.—Morning Prayer, second and fourth Sundays.

ST. MARY CATHOLIC CHURCH
(United Church of Christ)
The Rev. F. Francis Wahowiak
Saturday, May 8—
7:30 p.m.—Mass.
Sunday, May 9—
Masses at 6:30 a.m., 8:00 a.m., 10:00 a.m., and 11:30 a.m.

CONGREGATIONAL CHURCH
(United Church of Christ)
The Rev. Daniel Kelin, Pastor
Sunday, May 9—
10:00 a.m.—Church school.
10:00 a.m.—Morning worship.

ST. THOMAS EVANGELICAL LUTHERAN
The Rev. Daniel L. Mattson, Pastor
Sunday, May 9—
10:00 a.m.—Worship service.
11:00 a.m.—Sunday school and bible study.

SALEM GROVE UNITED METHODIST CHURCH
Sunday, May 9—
10:00 a.m.—Sunday school.
11:00 a.m.—Worship service.

FIRST CHURCH OF CHRIST, SCIENTIST
1883 Washtenaw Ave., Ann Arbor
Sunday, May 9—
10:30 a.m.—Sunday school.
10:30 a.m.—Morning service.
Lesson-sermon: "Adam and Fall Man."

ST. JACOB EVANGELICAL LUTHERAN CHURCH
12501 Riethmiller Rd., Grass Lake
The Rev. Andrew Bloom, Pastor
Sunday, May 9—
9:00 a.m.—Sunday school.
10:15 a.m.—Divine services.

NORTH LAKE UNITED METHODIST CHURCH
Sunday, May 9—
9:30 a.m.—Worship service.
10:30 a.m.—Sunday school.

IMMANUEL BIBLE CHURCH
145 E. Summit St.
The Rev. Frank C. Frinkle
Sunday, May 9—
9:45 a.m.—Sunday school, nursery provided.
11:00 a.m.—Morning worship, nursery provided.
7:00 p.m.—Evening service.
Every Wednesday—
Family hour, prayer meeting and Bible study.

Glass Recycling Station Opens Near Ann Arbor

A major glass recycling station sponsored by the Ecology Center in Ann Arbor, opened at the Arborland Shopping Center, Sunday, May 2. The recycling station is located in the northwest corner of the parking lot of the shopping center, which is on Washtenaw Ave., at the US-23 Interchange in Ann Arbor.
Managed by local citizens, the station will be open Sunday through Thursday, from 10 a.m. until 5:30 p.m. It is the first citizen-managed, daily recycling operation operated in a shopping center across the nation.
All local residents and groups who are "doing their thing" for ecology are urged to make use of this new and significant service.

Researcher Finds Husbands Control Their Wives Weight

Ann Arbor—The husband who needles and berates his wife for being fat may be the main reason she became, and stayed, that way, according to Prof. Richard B. Stuart of the University of Michigan School of Social Work.

The co-author of a forthcoming book on "Behavioral Control of Overeating" has found that some men want to maintain their wives' extra poundage as a "personal one-upmanship." Others believe it keeps the women from being promiscuous, and some think it's attractive.

In helping more than 200 women shed 30 to 40 percent of their weight during the course of a five-year study, Stuart found the co-operation and encouragement of husbands, as well as friends and co-workers, essential to his patients' success.

"We don't assume a fat person lacks self control," he explained. "We feel his overeating is a consequence of what is presented to him in his environment, particularly the people he is exposed to." Instead of criticizing his patients for gaining weight, Stuart believes in praising them heavily for losing. "If they go off the diet, they'll feel badly enough about the loss of social approval

without additional reprimands," he said.

In addition to the traditional techniques of decreasing food intake and increasing exercise, Stuart requires his dieters to "gain control of their environment."

"Many people eat in association with other activities such as reading or watching television. These things become a cue for food consumption."

"There are women who finish their family's table scraps to 'save the starving children of the Orient.' Others eat a meal in the course of preparing a meal, testing."

After taking inventory of a patient's snack habits, Stuart works out a schedule with her and her husband of when and under what circumstances her eating will take place. He and his co-worker, nutritionist, Barbara Davis, devised a balanced, flexible diet allowing patients to exchange certain quantities of food for other foods, and a check list to help them keep track of caloric intake and expenditure.

Stuart has been 85 percent successful with married women, compared to 30 percent success with unmarried. "The husband's assistance in managing his wife's eating behavior has been a big factor in the diet's results," he observes. "Men control their wives' weight." Stuart is currently applying his theories to studies of overweight in children and drug abuse. "Behavioral Control of Overeating" is scheduled to be published Sept. 1 by Research Press.

Sharon Bible Church Plans Special Service To Honor Mothers

North Sharon Bible church will give special honors to mothers at the 11 a.m. service on Mother's Day, May 9. An honorary token will be presented to each mother present.

Special awards will be given to the oldest, youngest and newest mother present. Also mothers who come the farthest and-or, mothers with the most children and-or grandchildren present will be honored.

Mothers of all Sunday school children are especially urged to attend.

The church is located at Sylvan and Washburne Rds., south of Grass Lake Rd., about 7 miles east of Grass Lake.

"Two and two still make four, in spite of progress in other fields."

TEACHER TOPICS

By Mary Ann Paulin, Beach School Librarian
National Library Week no longer seems an appropriate title for the week stressing reading in modern schools. At Beach Middle school, the library is on its way toward becoming a true media or materials center. This concept involves the complete integration of all materials used in the learning process. Such materials include slides, filmstrips, 16-mm films, maps, globes, pamphlets, record, transparencies, magazines, and books.

Our society has become increasingly multi-media oriented and students are accustomed to using a combination of media and they learn better when several senses are involved in the learning process.

Often the function of a library or materials center is thought of only in terms of circulating or lending materials. However, the scheduling of materials and equipment is only one function. Maximum use of the equipment such as projectors and recorders requires strict scheduling and much co-operation among teachers. This is especially true when materials are borrowed from the Washtenaw Intermediate School District or are rented.

Planning is required so that facilities and equipment are available to everyone the day the borrowed materials arrive.

An example of strict scheduling of materials to students are the overnight reserve books which have a limited circulation because the number of students using them outnumbers the books available. The normal two-week circulation, however, is facilitated by a "self-serve" policy whereby the students check out their own materials. Volunteers often help check materials back into the library.

The materials center exists to serve students and teachers. Services given to teachers ultimately means better education for students. Finding the right materials for teachers and students is an important service. The librarian cannot be concerned with just titles of filmstrips or books but must also know the content and relationship of the materials to what is being studied by various classes. Therefore, an important task of the librarian is to be a materials consultant in the team of teachers planning basic units of study. It is not an accident that a librarian is a certified teacher; a knowledge of curriculum, teaching methods, and student behavior is essential.

The librarian's specialty is to know what types of materials are available on various grade levels for the topics to be studied as well as which ones will best meet the needs of Beach students.

After materials are selected, they must be ordered, catalogued, and physically prepared to circulate. Then the librarian must make teachers aware of new materials through bibliographies. Since they have already co-operated in selecting the materials, team teaching in helping the students

to use the materials to complete projects or reports follows naturally.

Sometimes the librarian and teacher work together with the entire group, but other times students may be sent individually or in small groups to the library to receive help. Results of this co-operation which are displayed in the materials center right now include medieval castles made by history students and accompanied with appropriate books, mobiles of countries, and a huge map of Europe.

St. Paul Youth Will Attend EMU 'Superstar' Show

St. Paul United Church of Christ has reserved 100 seats for the Tuesday evening, May 11 performance at Eastern Michigan University of the rock-opera "Jesus Christ, Superstar."

The activity is sponsored by the Senior Youth Group. Tickets may be obtained at the EMU ticket office.

Although the event is primarily for the youth of St. Paul church, others may obtain the "left-over tickets," by contacting Mrs. Tim Whitesall the day of the performance.

Confirmation Ceremony Held at St. Barnabas

Confirmation ceremonies were held Wednesday evening, April 28 at St. Barnabas Episcopal church for five young people and two adults. Newly confirmed members of the church are Douglas Beaumont, Kimberly Brown, Matthew Lindauer, Arthur Vizthum, Pamela Johnson, and Mr. and Mrs. John Parsons.

Bishop Archie Crowley, suffragan bishop, was confirming bishop, and officiated at the Holy Communion service which followed.

Kathleen Tilt Cited For Honors at MSU

Kathleen A. Tilt, 1031 N. Steinbach Rd., has been named to the Michigan State University honors list for the winter term.

Kathleen is a Dexter High school graduate in her freshman year at MSU.

The casual borrower is a casual payer.

Helping students find information involves formal and informal instruction. Besides a general orientation, the review of special skills occurs during the year when needed. For example, a brief review followed by actual use of an index to magazines called the Readers' Guide to Periodical Literature was recently given to an English class preparing to give persuasive speeches. Similarly, instruction is given on how to use the opaque projector to students who need to enlarge pictures to accompany reports. Also, French students are taught to use the tape recorders so they may independently listen to prepared French tapes or to record their pronunciation so the teacher may check their progress. Showing students how to use individual viewers so they may view filmstrips independently is also necessary. Even after students know how to use the various machines, supervision is required.

Encouraging students to read more and helping them to select materials to meet their interests and abilities is an important job and may be accomplished in many ways. One way is through informal book talks to classes and clubs in which many books are brought to the attention of students. Another is helping a student find materials for his or her own personal recreational reading or independent project. Bulletin boards and displays also introduce students to books. The display of baseball books and the display of material about microbes are current examples. Informal browsing on the rug near the current magazines is encouraged.

As you can see, a variety of activities may occur simultaneously in the Beach school Materials Center. Although all of them are concerned with reading and the learning process, they are not limited to books.

Any communication to the CBA may be sent to CBA, P. O. Box 141, Chelsea.

Wash it again and again and again

The durability of enamel and the convenience of latex combined in one great paint!

New Dutch Boy® Latex Satin Gloss Enamel—dirt, finger marks, food spatters vanish with a swipe of a sponge. Other pluses:

- Flows on smooth and easy with roller or brush.
- Fast dry; non-yellowing.
- Odorless.
- Just the thing for bathrooms, kitchens, woodwork, etc.

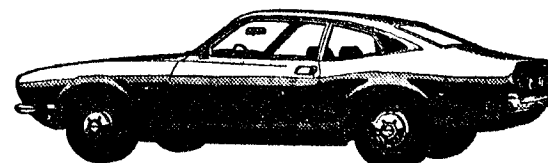
Stop by for Dutch Boy Latex Satin Gloss Enamel today!



MERKEL BROS.

Open Mon. & Fri. Until 9
Phone 475-8621

(and \$71 a month for 36 months*)



NEW FORD MAVERICK

*Payment plan is based on a cash price of \$2220, a total deferred payment of \$2556 on approved credit. The ANNUAL PERCENTAGE RATE is 11.08%. State and local taxes, dealer preparation charges, if any, are extra.



NOBODY BEATS THE FORD TEAM
PALMER MOTOR SALES, INC.
CHELSEA, MICHIGAN



we have
\$100,000
a day available for mortgage loans

It's spring and Ann Arbor Federal Savings is blossoming out with mortgage money. About \$100,000 a day for home financing. The mortgage specialists at the "FED" believe that this is a good time to buy or build. Terms are the best in years and with increasing construction costs you'll save money by buying now.

AAFE
the savings and loan specialists

ANN ARBOR FEDERAL SAVINGS

WASHTENAW COUNTY PARK RULES

The Chelsea Standard, Thursday, May 6, 1971 13

Pursuant to Act 261 of the Public Acts of the State of Michigan of 1965, as amended, the Board of County Park Trustees of Washtenaw County herewith promulgates and publishes the following rules for the use, protection, regulation and control of all of its services, facilities and park, recreation, conservation, education, historic, and scenic areas and preserves and parkways.

SECTION I—DEFINITIONS

1. "Board" shall mean the Board of County Park Trustees of Washtenaw County or its chairman.
2. "Board's property" shall mean all lands, waters and property administered by or under the jurisdiction of the Board of Park Trustees of Washtenaw County.
3. "Person" or "persons" shall mean individuals, male or female, singular or plural; firms, corporations or any group or gathering of individuals.
4. "Camping" means the overnight lodging or sleeping of persons on the ground or in any other manner, or in any sleeping bag, tent, trailer-tent, trailer coach, vehicle camper, motor vehicle, boat or in any other conveyance erected, parked or placed on the premises or waters within any park or recreation area administered by the Board of Park Trustees of Washtenaw County.
5. "Rules" shall mean the rules adopted by the Board of Park Trustees of Washtenaw County applicable to all property administered by or under the jurisdiction of the said Board and all amendments thereto.

SECTION II—HOURS

No person shall remain upon property administered by or under the jurisdiction of the Board between 10:00 p.m. and 6:00 a.m. Provided, however, that upon application to the Board or its authorized agent said hours may be extended. It shall be unlawful for any person to enter upon any portion of parklands or waters which have been designated as closed to public use or entry.

SECTION III—DESTRUCTION OF BUILDINGS, MARKERS, MOUNTMENTS AND OTHER PROPERTIES

No person shall, upon the property of the Board:

- (a) Willfully destroy, deface, alter, change or remove any monument, stone marker, bench mark, stake, post or blaze, marking or designating any boundary line, survey line, or reference point.
- (b) Cut, break, mark upon or otherwise injure any building, equipment, bridge, drain, wall, fountain, lamp post, fence, gate, hedge or other structure.
- (c) Deface, destroy, or remove any placard, notice or sign, whether permanent or temporary, posted or exhibited within or upon park property.
- (d) Appropriate, excavate, injure or destroy any historical or pre-historical ruin or any object of antiquity, without permission of the Board.

SECTION IV—DESTRUCTION OF PLANT LIFE AND NATURAL SURROUNDINGS

No person shall, upon the property of the Board:

- (a) Cut, remove, or destroy any tree, sapling, seedling, bush or shrub, whether alive or dead, or chip, blaze, box, girdle, trim or otherwise deface or injure any tree or shrub, or break or remove any branch, foliage, flower or any tree or shrub, or pick, gather, uproot, remove or destroy any flower, plant or grass.
- (b) Remove or cause to be removed any sod, earth, humus, peat, boulders, gravel or sand, without written permission of the Board.

SECTION V—FIRES

- (a) No person shall willfully set or cause to be set on fire any tree, woodland, brushland, grassland or meadow within or upon the property of the Board.
- (b) No person shall build any fire upon Board property except within the fireplaces, receptacles or picnic areas approved and designated by the Board for such purpose.
- (c) No person shall drop, throw, or otherwise scatter lighted matches, burning cigars, cigarettes, tobacco paper or other inflammable material within or upon any property of the Board.

SECTION VI—ANIMALS AND BIRDS

No person shall hunt, trap, catch, wound or kill or treat cruelly, attempt to trap, catch, wound or kill any bird or animal, molest or rob any nest of any bird or any lair, den or burrow of any animal in or upon any land or waters administered by or under the jurisdiction of the Board. Provided, however, fishing will be permitted within or upon Board property in accordance with the laws of the State of Michigan and the rules of the Department of Natural Resources of the State of Michigan in such areas designated for such purposes.

SECTION VII—CONTRABAND

All game animals, fowl, birds, fish and other aquatic life, hunted, killed, taken or destroyed, bought, sold, bartered or had in possession, contrary to any of the provisions hereof, shall be and the same are declared to be contraband and the same shall be subject to seizure and confiscation and shall be turned over to the Michigan Department of Natural Resources for disposal. Provided further, that any weapon or object carried or used by any person in violation of these rules, shall be subject to seizure by the Board or its agents and disposed of according to law.

SECTION VIII—SWIMMING, BATHING AND WADING

No person shall:

- (a) Swim, bathe, or wade in any of the watercourses, lakes, ponds or sloughs located within or upon the properties administered by or under the jurisdiction of the Board except at such times and places as may be provided or designated for such purpose.
- (b) Carry or consume any food or beverage of any kind, nor have in their possession any glass or metal container on any beach or in the water adjacent thereto.

SECTION IX—BOATING

No person shall bring into, use or navigate any boat, yacht, canoe, raft or other watercraft upon any watercourse, lagoon, lake, pond or slough located within or upon the properties administered by or under the jurisdiction of the Board, except at such time or places as may be provided or designated for such purpose. All watercraft shall comply with and be used in compliance with Public Act 303 of the Public Acts of the State of Michigan, of 1967 as amended and such regulations as may be adopted under the authority of the act.

SECTION X—CAMPING

There shall be no camping in any parks or other property under the management, supervision or control of the Board.

SECTION XI—PARKING IN PROHIBITED AREAS

Standing for loading or unloading in certain places:

- (a) It shall be unlawful for the operator of a vehicle to stop, stand or park said vehicle in any place marked as a passenger or loading zone, other than for the expeditious loading or unloading of passengers, or for the unloading and delivery or pick up and loading of materials.
- (b) It shall be unlawful for the operator of a vehicle to stop, stand or park such vehicle upon any roadway or in any parking area in such manner as to form an obstruction to traffic thereon.

SECTION XII—HORSES

- (a) It shall be unlawful for any person to ride, lead or cause or suffer a horse to be upon any property administered by or under the jurisdiction of the Board.

SECTION XIII—MOTOR-DRIVEN VEHICLES

It shall be unlawful for any person to:

- (a) Operate a motor-driven vehicle of any kind or nature except on roads or designated parking areas.
- (b) Operate a motor-driven vehicle on any park road at a speed exceeding 15 miles per hour or at any speed greater than that posted.
- (c) Operate any motor-driven sled, toboggan or snowmobile, or any other motor-driven sport vehicle on any property under the management, supervision or control of the Board, except where permitted by posted notice.

SECTION XIV—OPERATION OF BICYCLES

- (a) Bicycles shall be operated as closely to the right-hand curb or right-hand side of the path, trail or roadway as conditions will permit and not more than two bicycles shall be operated abreast.
- (b) It shall be unlawful for the operator of any bicycle upon any path, trail or roadway to carry any person upon the handlebar or frame of any bicycle, or for any person to so ride upon such bicycle.
- (c) Bicycles may be operated upon such paths, trails, or roadways as may be posted allowing such use; provided, however, no such use shall be allowed between sunset and sunrise.

SECTION XV—LIVESTOCK

No person shall drive or cause to be driven any horses, cattle, sheep, goats, swine, or other livestock upon or across any property administered by or under the jurisdiction of the Board without the written permission of the Board.

SECTION XVI—PEDDLING AND SOLICITING

It shall be unlawful for any person to peddle or solicit business of any nature whatever, or to distribute handbills, or other advertising matter to post unauthorized signs on any lands, waters, structures, or property administered by or under the jurisdiction of the Board, or to use such lands, waters, structures or property unless first authorized in writing by the Board or its authorized agent.

SECTION XVII—UNLAWFUL OBSTRUCTION

No person, firm or corporation shall by force, threats, intimidations, unlawful fencing, enclosing, or by any other means, prevent or obstruct any person from entering, leaving or making full use of any property administered by or under the jurisdiction of the Board.

SECTION XVIII—HINDERING EMPLOYEES

No person shall interfere with, or in any manner hinder any employee or agent of the Board while performing his official duties.

SECTION XIX—RESISTING PARK EMPLOYEES

No person shall interfere with any park employee in the discharge of his duties; or fail or refuse to obey any lawful command of any park employee.

SECTION XX—PERSONAL CONDUCT

- (a) It shall be unlawful for any person to be under the influence of intoxicants, or to engage in any violent, abusive, loud, boisterous, vulgar, lewd, wanton, obscene or otherwise disorderly conduct tending to create a breach of the peace, or to disturb or annoy others, while in or on any property administered by or under the jurisdiction of the Board.
- (b) It shall be unlawful to conduct or to participate in any form of gambling lottery or game of chance upon park property.

SECTION XXI—USE OF LOUDSPEAKER

It shall be unlawful to use a loudspeaker, public address system or amplifier within or upon Board property without a written permit issued by the Board.

SECTION XXII—FIREWORKS

No person shall fire, discharge or have in his or her possession any rocket, firecracker, torpedo, squib, or other fireworks or any substance of an explosive nature within or upon the property of the Board.

SECTION XXIII—FIREARMS

No person shall at any time bring into or upon the properties of the Board, nor have in their possession, nor discharge, or set off anywhere upon said properties, a revolver, pistol, shotgun, rifle, air rifle, air gun, water gun or any gun, rifle, firearm or bow or other weapon that discharges projectiles either by air, explosive substance or any other force. Provided, however, that this section shall not apply to any deputy sheriff, police officer, peace officer, or other duly appointed law enforcement officer while carrying out the duties and responsibilities of their position.

SECTION XXIV—LITTERING AND POLLUTION OF WATERS

It shall be unlawful:

- (a) To discard, to deposit refuse of any kind or nature in or upon the property of the Board except by placing said refuse in containers provided for such purpose.
- (b) No refuse, garbage, or other noxious materials from areas outside of park areas will be placed in refuse containers provided for park use.
- (c) To throw, cast, lay, drop or discharge into or leave in waters administered by or under the jurisdiction of the Board, any substance, matter or thing, liquid or solid, which may or shall result in the pollution of said waters.

SECTION XXV—SKATING AND COASTING

- (a) No person shall skate, sled, walk or go upon any ice, or snowshoe, or ski except at such times and upon such places as may be designated or maintained therefore.
- (b) No person shall within or upon Board property coast with hand sleds, bobs, carts, or other vehicles on wheels or runners except at such times and upon such places as may be designated or maintained therefore.

SECTION XXVI—BALLOONS, AEROPLANES AND PARACHUTES

No person shall exhibit any machine or show, or any animal, or indulge in any acrobatic exhibitions in or upon any property of the Board nor shall any person carry on any performance or do anything whatsoever, which shall cause persons to congregate so as to interfere with the proper use of such property by the general public or to obstruct the passage of vehicles or persons, without first having obtained written permission from the Board.

SECTION XXVII—ANIMALS AND BIRDS

It shall be unlawful for any persons while on Board property to:

- (a) Cause any animal or fowl to run at large;
- (b) Bring, drive, lead or carry any dog or other animal or pet which is unleashed, or upon a leash more than six feet in length, under immediate control of a competent person;
- (c) Suffer his dog or pet to enter any public building or to be upon any designated beach, except a trained and working leader dog;
- (d) Cause or permit any horse or other animal to stand on any Board property unless securely hitched or in charge of some competent person;
- (e) Torture, ill-treat or neglect any animal or fowl.

SECTION XXIX—SPECIAL PERMITS

- (a) No erection, construction or maintenance shall be made above or below ground, across or beneath the property of the Board by any person, firm or corporation without first having obtained written permission from the Board authorizing such installation or construction and a permit specifying in detail the work to be done and the conditions to be fulfilled pursuant to the terms of such approval.
- (b) Notwithstanding any of the provisions hereof, the Board or its agents may, upon written application grant specific use permits for special uses when in the opinion of the Board or its agents special consideration is warranted.

SECTION XXX—EMERGENCY POWERS

Nothing in these rules shall:

- (a) Prohibit or hinder any duly authorized agents of the Board or any peace officers from performing their official duties.
- (b) Prohibit the Board, director, or park manager from establishing emergency rules required to protect the health, welfare and safety of park visitors and to protect park property, and to maintain order.

SECTION XXXI—FINES AND IMPRISONMENT

Any person violating any provision of the foregoing rules shall be deemed guilty of a misdemeanor and upon conviction thereof shall be fined not more than \$100.00 and costs of prosecution, or imprisoned in the county jail for a period not exceeding 90 days or both, for each offense.

APPROVED BY
WASHTENAW COUNTY BOARD OF COMMISSIONERS
APRIL 29, 1971

APPROVED BY
WASHTENAW COUNTY PARK TRUSTEES
MAY 4, 1971

Team Wins First 'Unofficial' Tennis Matches of Season

Chelsea High school's tennis team, a presently unauthorized sport, which is coached by Dennis Raymond, played their first match of the season Thursday afternoon, April 29. This year's team, which features three singles players, and three doubles pairs, is subsidized by the high school with two cans of tennis balls and the use of the driver's education car for out-of-town trips.

Playing on this year's team are doubles John Gilbert and Lynn Houle, who play in the number one spot; Steve Knickerbocker, and John Porter, in number two, and Douglas Van Gorder and Ed Koenigter, in number three. Singles on the team include Mike Hergert, number one; Tom Hubert, number two; and Bob Rutherford, number three.

Last Thursday's meet was held with Stockbridge, with the singles matches played at Chelsea, and doubles at Stockbridge. Chelsea won the match, with every Chelsea single and double winning, with the exception of one.

Houle and Gilbert defeated their Stockbridge opponents, 6-1, and 6-0, while Knickerbocker and Porter were first with scores of 6-2, and 6-4.

Van Gorder and Koenigter won their matches, 6-2 and 6-2.

Singles action saw Hergert defeated, 7-9 and 16, although Hubert won his matches 6-1 and 6-0. Rutherford won both matches 6-2 and 6-0.

According to volunteer coach Dennis Raymond, the boys on the team may use the Chelsea courts each night for two hours of practice, and for games. The team does not yet have real varsity status, but the boys are hoping to attain such in the next few years.

Boy Scout Troop Sponsors Paper Drive

Boy Scout Troop 476 will sponsor a magazine and paper drive Saturday, May 8. Papers and magazines need not be tied in bundles, although if they are, Boy Scout officials ask that magazines and newspaper be separated.

Those with papers they would like to contribute are urged to contact any of the following: Willis Heydlauff, 479-7179; Verne Hiltz, 475-7716; Charles Hafner, 475-2890; or Richard Kalmbach, 475-7656.

Kiwanians Hear Adoption Agency Report

"Spaulding for Children" was the topic for Monday evening's Kiwanis Club speaker, Mrs. Mildred Pryor, of Ann Arbor. Mrs. Pryor, who is a member of the Board of Directors of Spaulding, was introduced by Louis H. Burghardt.

She discussed the process by which Spaulding for Children operates when it tries to find homes for children placed in its care. The Spaulding operation seeks homes for children who are available for adoption, but are not necessarily considered "adoptable" by the normal standards. They are not always pink and white, and of average or above average intelligence.

Mrs. Pryor was asked about the effect of a liberalized abortion law on her organization. She claimed that while the liberalized abortion laws would cut down on the number of the types of children which Spaulding tries to place, that there would still exist a need for Spaulding for Children for there would still be some children seeking homes, who are not considered "normal," by all standards.

Approximately 50 to 60 Kiwanians were present for the talk. Next week, Dr. Donald Safer will present a slide presentation and a talk on the topic, "An Occidental's View of the Orient."

D. Rowe Re-Appointed To Advisory Board for Water Well Drillers

Gov. William G. Milliken announced Thursday the re-appointment of Duane Rowe, 18530 Bush Rd., to the Advisory Board for Registration of Water Well Drillers for a term expiring March 30, 1974.

Rowe is State Director of the Michigan Well Drillers Association, and has served on the board since 1966.

Also appointed for the same length term was Ashton K. Hayes Sr., of Petoskey. He is owner of a Petoskey well-drilling company, and was appointed in 1969.

In August 1970, the index of consumer prices had increased 36 percent over the 1957-59 level. Over-all medical costs had increased almost twice that much, 66.8 percent.

LAST DAY OF REGISTRATION School Election

Notice of the Last Day of Registration
of the Qualified Electors of

Chelsea School District

WASHTENAW and JACKSON COUNTIES, MICHIGAN

TO THE QUALIFIED ELECTORS
OF SAID SCHOOL DISTRICT:

Please Take Notice that the Annual Election of said School District will be held on

Monday, June 14, 1971

The last day on which persons may register with the appropriate Township Clerks, in order to be eligible to vote at the Annual School Election called to be held on Monday, June 14, 1971, is

FRIDAY, MAY 14, 1971

Persons registering after 5:00 o'clock p.m., on the said Friday, May 14, 1971, are not eligible to vote at said said Annual School Election.

Persons planning to register with the respective township clerks must ascertain the days and hours on which the clerks' offices are open for registration.

The proposed Twenty-Sixth Constitutional Amendment to the United States Constitution reads in part as follows:

"Section 1. The right of citizens of the United States, who are 18 years of age or older, to vote shall not be denied or abridged by the United States or by any state on account of age."

Upon ratification of the proposed Constitutional

Amendment by the 38th State, all residents of the school district who are registered with their respective city or township clerks and are 18 years of age or older shall be afforded the right to vote.

This Notice is given by order of the Board of Education.

HERMAN L. KOENN
Secretary, Board of Education.

Dated: May 3, 1971.

Unique Greeting Card Has Been Used for 32 Years

Mrs. V. O. Johnson, wife of the administrator of the Chelsea Methodist Home, has a somewhat unique relationship with her uncle, D. V. Carter, of Richland, Tex.

Feb. 3, 1939, in celebration of Carter's 48th birthday, Mrs. Johnson sent a "Scotchman's Greeting Card," to him, because of his sense of humor. The card was imprinted with a list of holidays and the following instructions:

"Mark X on the holiday you wish to use this card for. Use pencil so mark may be erased and card used again."

Carter mailed it back to his niece on Valentine's Day, and that was the beginning of the card's shuttle service which has continued for more than 32 years.

Christmas, New Year, birthday, Valentine, Easter, July 4, Halloween and Thanksgiving were printed on the card, but Carter and Mrs. Johnson added other greetings, such as Labor Day, May

Day, Mother's Day, and Get Well. Now a trifle worn, the card has become a treasured symbol of family history, having traveled approximately 130,000 miles in its 32 years of use.

Because of her husband's work, which has caused many moves for the Johnsons, the card has been mailed from many different places, including, of course, Chelsea.

Sharing reminiscences recently of events that have occurred since the card has been in circulation, Mrs. Johnson, and Carter remembered that six presidents have served the United States, and postage rates for mailing letters have increased from three cents to six cents.

Now's a good time to take stock of canned meat supplies and add missing items to the market list. Canned meats come in handy and are time savers.



HERMAN F. LUHR'S, SR., father of Mrs. Jack Dunn, of Chelsea, was cited for his outstanding contributions to the state and nation Thursday, April 22, on the floor of the Michigan Senate. Above, the 77-year-old resident of Roscommon, is congratulated by State Senators Joseph Mack, Garland Lane, and John Toepf. Luhrs has been a Capitol legislative agent for many years, and the legislative accomplishments where his counseling services were well received have been many.

Kiwanis Club Contributes to Forney W. Clement Foundation

Chelsea Kiwanians, under the direction of President Walter Zeeb, have made a contribution to the Forney W. Clement Memorial Foundation, it was learned this past week.

Since 1922, groups of Michigan Kiwanians have furnished recreational equipment to hospitalized children at the University of Michigan Hospital in Ann Arbor. Developed into a recreational and educational program this work has been carried on by the Forney W. Clement Memorial Foundation since its incorporation in 1953. Forney W. Clement was the first full-time Kiwanis secretary-treasurer of the Michigan District.

Today, Forney W. Clement project is part of the C. S. Mott Hospital school program at the University of Michigan Hospital. The program provides educational and recreational activities designed to assist patients to cope with the stresses of hospitalized illnesses, and continue their education.

Funds for salaries, supplies, and equipment are granted by the Foundation to be used in the recreation, pre-school, and isolation areas of the school program.

Since 1961 the foundation has extended its scope to include the Mary Free Bed Hospital in Grand Rapids. This special project is in memory of Ben Bean, a distinguished Kiwanian. The program at the Mary Free Bed Hospital covers both recreation and music activities to meet the needs of patients. Funds granted by the foundation provide for supplies, equipment, and salaries for this program.

It is estimated that 6,000 residents of Michigan each year profit from the services of the Foundation. A total 485 residents from Washtenaw county were aided by the Forney W. Clement Foundation last year.

Grass Fires Still Keeping Firemen Busy on Calls

Fires have continued to keep firemen busy despite some rain, and hopefully, more caution on the part of local citizens.

Friday afternoon, about 2:15, firefighters were called to 216 McKinley St. to extinguish a blaze in a car owned by Don Houle of that address. Minor damage to the car resulted from the fire.

At 6:18 that evening, firemen were sent out on a needless run, as Bernard Herrst, 780 Freer Rd., burned off a marsh without a burning permit. The fire was totally under control at the time firemen were summoned by neighbors, who were concerned.

At 8:45 Monday morning, May 3, firemen were called to the Chelsea Methodist Home when a pipe in the Home's sprinkler system broke, setting off the alarm. There was no fire, and the leaky pipe was fixed.

Grass fire at the home of Flora Burt, near Island Lake, brought firemen out Monday afternoon at 1:42. The cause of that fire is unknown at this time.

Subscribe today to The Standard!

North School Boosters Plan Fun Fair

North School Boosters are presenting a "Fun Fair" Saturday, May 22 at the school, to raise money for the school's playground. The fair will be held from 1 to 4 p.m., and will feature games, a fishing pond, "white elephant" sale, a cake walk, bake sale, prizes and balloons.

Plans for the event were finalized at the April 23 meeting of the Boosters. At that time it was asked if parents would help to provide general small items for a "fishing booth," and "white elephant" items for the sale. Mrs. R. Fahey, 475-2036, and Mrs. Proctor are in charge of the fishing booth, and Mrs. E. Bristle, 475-2266, is chairman of the "white elephant" sale.

Those wishing to donate baked goods for the bake sale are asked to contact Mrs. J. Morris, 475-8064. Baked goods may be brought in by 1 p.m. on May 22.

A snack bar will be featured at the event also. Mrs. R. Wirtz and Mrs. J. Eibler are responsible for that event.

Any persons who have questions, or who wish to volunteer their services are urged to contact Boosters president, the Rev. John Morris, 475-8064.

Man Wanted Here For Auto Larceny Arrested In Dowagiac By FBI

Chelsea police collected on an old warrant this past week as word was received from the FBI of the arrest of John Overmyer, Dowagiac. Overmyer, who operates under the alias of Joseph Fisher, was wanted for stealing a car from Palmer Ford in November of 1969.

Overmyer had entered the business and asked to look at a number of the vehicles. He asked to test drive one of the cars, a 1967 Ford Galaxy 500 around the block, and was never seen again.

The vehicle was recovered three days later, and Overmyer was arrested May 1, 1971. He was arrested on a fugitive warrant by the FBI, but is also being held for a "larceny by conversion" charge in Kalamazoo, and the same charge in Chelsea.

For Overmyer, at least, is appears that crime does not pay.

Never expect good luck to make up for looting.

Young Men Rescued When Boat Sinks

Near tragedy was avoided Wednesday evening, April 28, as two young men from the Detroit area came close to drowning in the chilly waters of Cavanaugh Lake.

The men had launched a small, eight-foot, aluminum fishing craft on the lake and were fishing, despite the high winds and waves that prevailed that evening. They left their oars on shore, and motored out into the lake, where, gradually, the high waves began to swamp the craft.

One of the men in the boat could not swim, so his companion emptied the gas tank, and tied him to it, as the boat started to sink under her waves.

Melvin Leach spotted the pair just as their boat had disappeared from sight. He notified Mr. and Mrs. Arthur Stoll, who live at 516 Glazier on the lake. Mr. and Mrs. Stoll are water skiing fans and put their speed boat in the water annually just as the ice goes out of the lake.

The Stolls rescued the two young men who were by this time very cold, and very scared, and took them home, where they fed, warmed them and dried them out before sending them on their way.

One of the two, Jim Morris, was from Livonia. His companion, also from Livonia, preferred to remain anonymous. Both were fathers of families, and were very grateful for their assistance.

All of the fishing gear and Morris' overcoat were lost, with the exception of the oars, which were left on shore! The boat was unharmed by the incident.

SCHOOL LUNCH MENU

Week of May 10-14

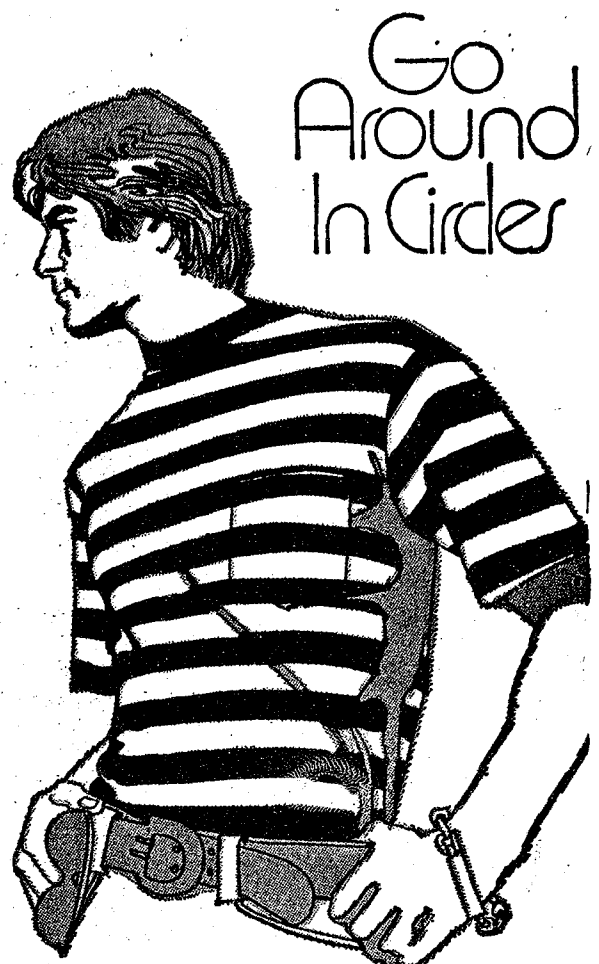
Monday, May 10 — Open face sandwich, mashed potatoes, gravy, wax beans, peach half, and milk.

Tuesday, May 11 — Spaghetti with cheese, buttered corn, french bread and butter, dessert, and milk.

Wednesday, May 12 — Grilled cheese sandwich, polka dot salad, pickles, chips, lemon pie, and milk.

Thursday, May 13 — Meat loaf, scalloped potatoes, bread and butter, fruit Jell-O, and milk.

Friday, May 14 — Wiener on bun, trimmings, potato tots, and cat-sup, mixed vegetables, dessert and milk.



Mr. Insider V Cru Neck by Puritan®

\$4 - \$5 - \$6

The great stripes go round and round and the fashion effect is sensational! Luxurious 100% combed cotton. Sizes S-M-L-XL.

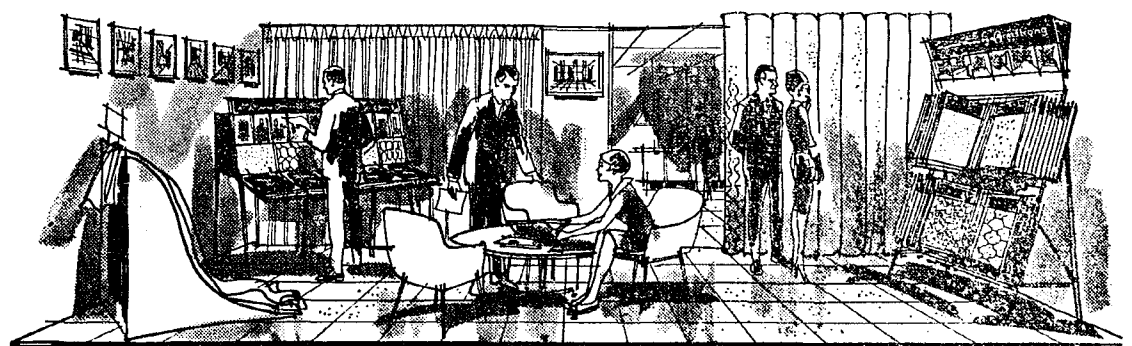
STRIETER'S MEN'S WEAR

"The Place To Go for Brands You Know"

Need an apartment? Use a Standard Want Ad!

Armstrong
the best known name in floors
is proud to announce the
Grand Opening
of a newly authorized

ARMSTRONG FLOOR FASHION CENTER



A new Armstrong flooring department is now open and ready to serve you!

Wide Selection—the latest Armstrong designs and colors; over 300 to choose from in a wide price range of popular styles.

Color-Coordination—trained salespeople who can help you select the color and design "just right" for your home.

Professional Installation—expert flooring craftsmen to insure the outstanding appearance and performance of your new Armstrong floor.

Budget Payments—convenient time-payment arrangements that will help you buy the Armstrong floor of your choice.

FREE RECORD OFFER

Stop in for a free estimate and pick up your complimentary album of Cole Porter's hit musical, "Kiss Me, Kate," starring Robert Goulet and Carol Lawrence. It's the original sound-track album from the Armstrong television special. The album is a collector's item, not available in any record stores, but your FFC dealer has a record just for you.



Look for this sign. It identifies the flooring store that offers you MORE—wider selection, decorating assistance, professional installation and budget payments.



Come in and get acquainted—special grand opening values being offered this week

MERKEL BROS., INC.

209 S. Main Street • Chelsea
475-8621

TREAT MOM TO
ICE CREAM
MOTHER'S DAY

MOTHER'S DAY SPECIAL

SUNDAY, MAY 9, ONLY

SUNDAES - MALTS - SHAKES - FLOATS - SODAS
PARFAITS - BANANA SPLITS - CONES

BUY MOTHER'S for 1¢
WHEN YOU BUY YOURS
AT REGULAR PRICE
Mother must be with you.



Also a variety of SANDWICHES - SHRIMP
FRENCH FRIES - ONION RINGS
FRESH CORNED BEEF - HOME-MADE CHILI
FRESH BAKED PIES

We Also Serve Breakfasts.

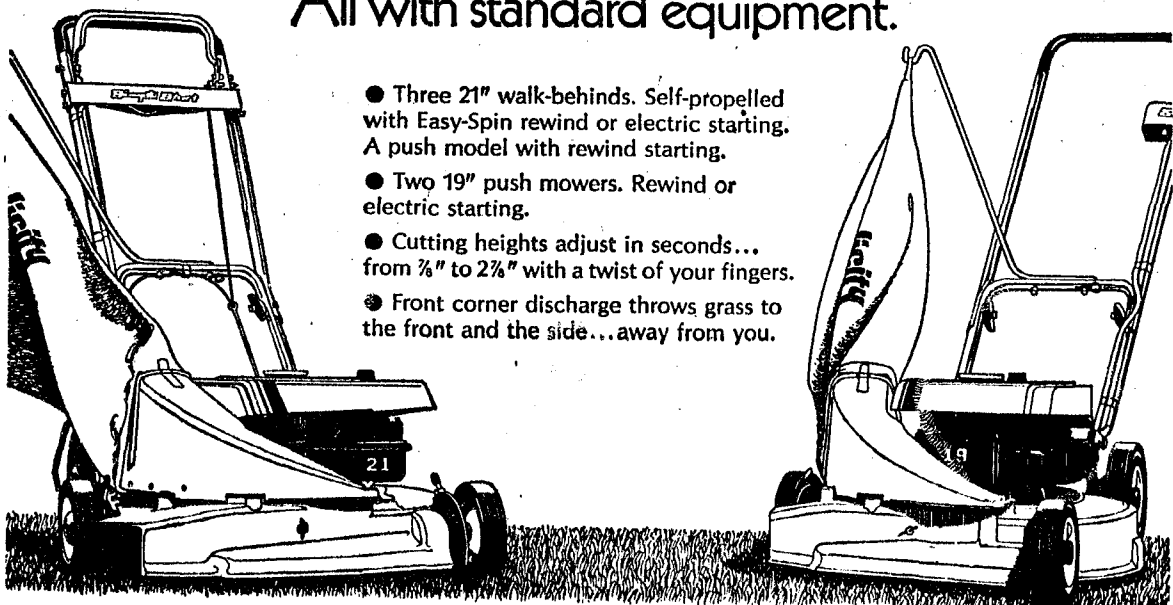
HUM-DINGER SHAKE 'N CHEESEBURGER
with FRIES — \$1.25

LOG CABIN LUNCH & DAIRY BAR

CLEAR LAKE ROAD — WATERLOO

we offer **Simplicity**

Mowers that change over easily.
From catching... to mulching... to dispersing.
All with standard equipment.



- Three 21" walk-behinds. Self-propelled with Easy-Spin rewind or electric starting. A push model with rewind starting.
- Two 19" push mowers. Rewind or electric starting.
- Cutting heights adjust in seconds... from 1/2" to 2 1/2" with a twist of your fingers.
- Front corner discharge throws grass to the front and the side... away from you.

Your life is complicated enough. We offer Simplicity.

CHELSEA HARDWARE

110 South Main St.

Phone GR 9-6311